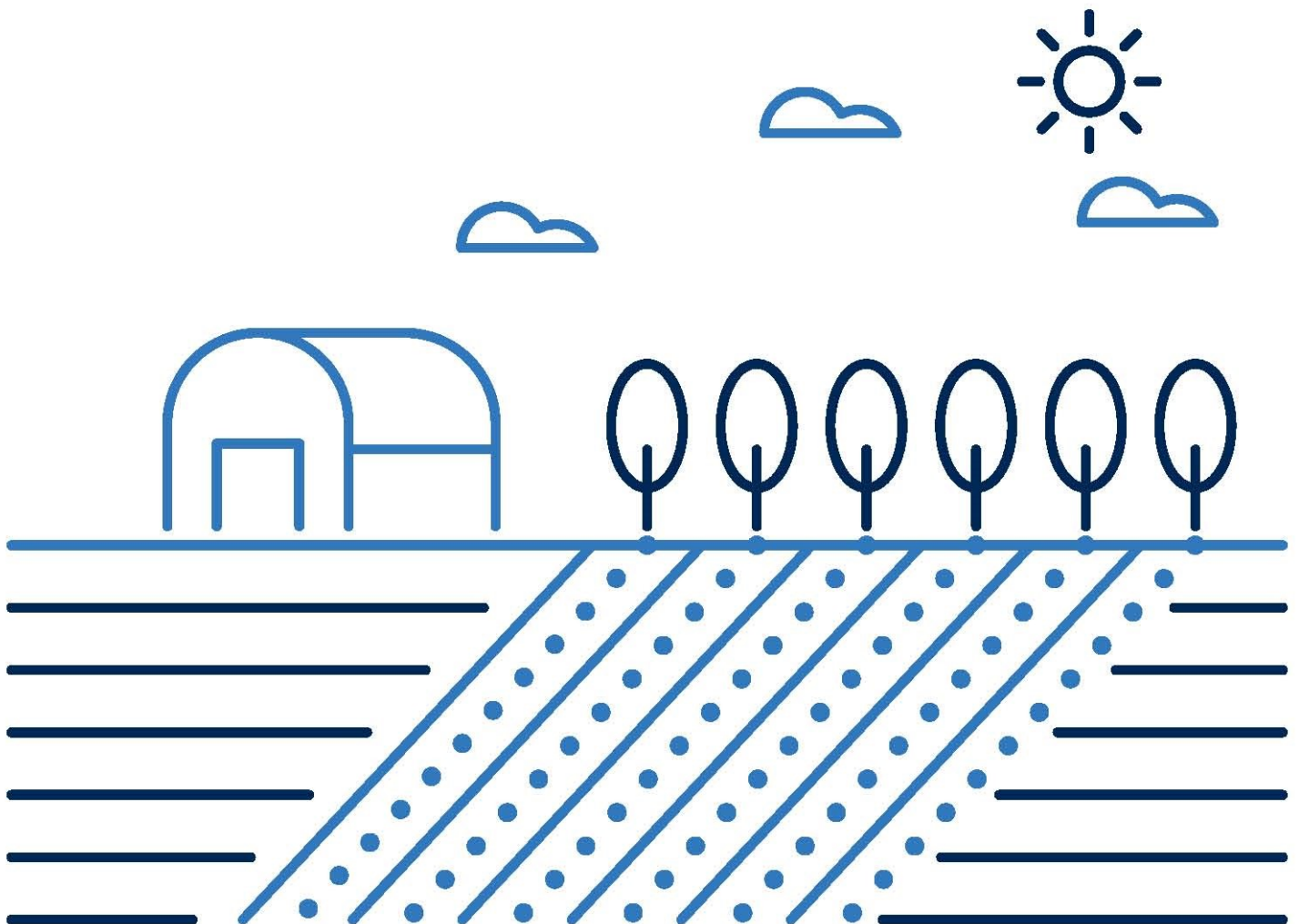


**2019/20**

# Drip Irrigation Catalogue



# DRIP IRRIGATION

## INTRODUCTION

### NETAFIM IS THE PIONEER AND GLOBAL LEADER IN DRIP AND MICRO IRRIGATION SOLUTIONS.

The company introduced drip irrigation to the world in 1965 and has led the industry ever since.

We have made over 150 billion drippers in the 52 years since the company was founded and Netafim products irrigate over 10 million hectares worldwide.

Netafim continues to be at the forefront of drip product innovation, producing the most precise and reliable drippers and dripperlines available today.

With the most comprehensive range of dripperlines and drippers, Netafim is able to meet any micro irrigation requirement in the market.

## CONTENTS

Pressure Compensated Dripperlines	3
Landscape Dripline	9
Non Compensated Dripperlines	12
Dripperline Fittings	16
Online Pressure Compensated Drippers	20
Online Non Compensated Drippers	24
Spray Stakes	27
DNL Values	28
Drip Irrigation Accessories	29
Pre Assembled Sets	34

## INTERNATIONAL STANDARDS

### Standard ISO 9261

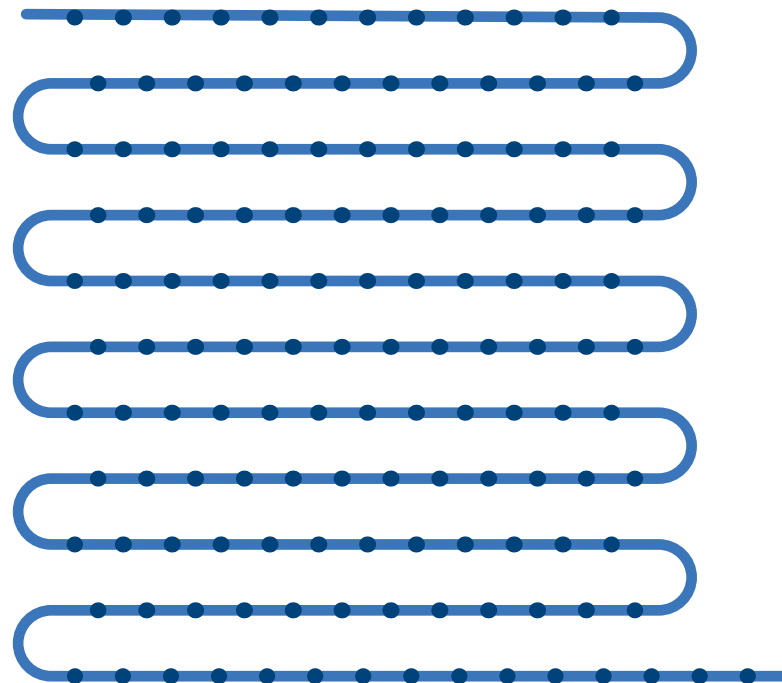
The majority of drippers and dripperlines appearing in this catalogue comply with the international standard ISO 9261. This standard refers to, and deals, with these products and actually determines their quality. The absolute majority of the Netafim™ irrigation products are in compliance with the International Standards provisions and under the supervision of the relevant institutions.

### Standards 9001 and 14001

These standards deal with, and focus on the organization/operation/adaptation of the manufacturing plant aimed at meeting the international regulations stated in these documents. Netafim™ complies with and possesses the relevant accredited certifications and such meets these international standards.

## KEY

- Item carried in the Netafim UK warehouse
- Item available from other Netafim facilities



# DRIP IRRIGATION

## PRESSURE COMPENSATED DRIPPERLINES

### UNIRAM™

#### PREMIUM DRIPPERLINE INCORPORATING IN-LINE, PRESSURE-COMPENSATING & CONTINUOUSLY SELF-CLEANING DRIPPER

##### FEATURES & BENEFITS:

Pressure compensated to ensure precise and equal amounts of water are delivered over a wide pressure range resulting in 100% uniformity of water and nutrient distribution along the laterals.

Double TurboNet™ labyrinth assures wide water passages and large deep and wide cross section improves clogging resistance.

Continuously self-flushing system with wide filtration area flushes debris as it is detected throughout operation even when using low quality water.

The design of the dripper draws the water from the stream centre preventing the entrance of sediments into the dripper.

Physical root barrier provides the ultimate protection against root intrusion without reliance on chemicals.

Injected dripper manufactured with a very low Coefficient of Variation resulting in consistent quality and uniform application.

High quality injected silicon diaphragm resulting in optimum flow control.

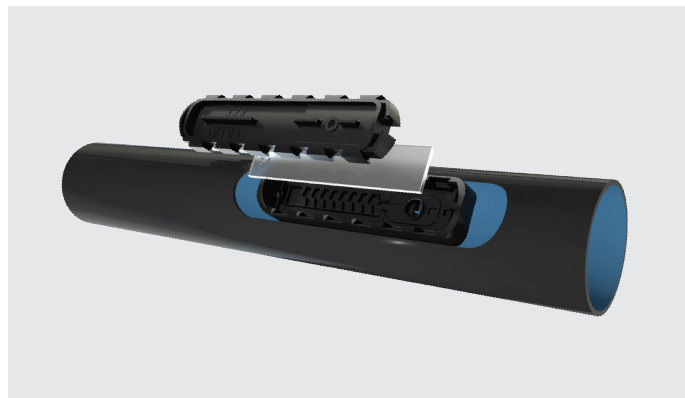
Netafim dripperlines meet ISO 9261 Standards with production certified by the Israel Standards Institute (SII).

Available from UK stock in 1mm and 1.2mm wall thickness. Other variants available on request.

High UV resistance and resistant to standard nutrients used in agricultural.

#### NETAFIM™ DRIPPERLINES ARE AVAILABLE IN FIVE TECHNOLOGY VARIANTS TO BE SELECTED BASED UPON THE SPECIFIC APPLICATION:

- RC** Pressure compensated dripper ensuring uniform application
- CNL** Pressure compensated dripper with non-leakage functionality facilitating pulse irrigation
- HCNL** Pressure compensated dripper with non-leakage functionality facilitating pulse irrigation with higher closing pressure suitable for use on sloping sites
- CNL XR** CNL dripperline with integrated copper oxide anti-root intrusion system
- HCNL XR** Higher pressure version of the CNL XR dripperline suitable for use on sloping sites



# DRIP IRRIGATION

## PRESSURE COMPENSATED DRIPPERLINES

### UNIRAM™ CNL

#### APPLICATIONS

- Sub-surface multi-season crops, deciduous and tree irrigation

#### SPECIFICATION

- Continuously self flushing
- Pressure compensating
- Anti-syphon
- Anti drain

<b>UNIRAM™ CNL 20MM X 1.0MM</b>	<b>0110</b>
---------------------------------	-------------

CODE	DESCRIPTION	SIZE	
14560-004400	1.6 lph @ 25cm	3000m	●

<b>UNIRAM™ CNL 16MM X 1.2MM</b>	<b>0110</b>
---------------------------------	-------------

CODE	DESCRIPTION	SIZE	
13880-003000	1.6 lph @ 25cm	400m	●

<b>UNIRAM™ CNL 20MM X 1.2MM</b>	<b>0110</b>
---------------------------------	-------------

CODE	DESCRIPTION	SIZE	
14540-001050	Z4099 2.3 lph @ 25cm	300m	●
14540-001400	Z4098 2.3 lph @ 30cm	300m	●
14540-001900	Z4097 2.3 lph @ 40cm	300m	●
14540-002100	Z4096 2.3 lph @ 50cm	300m	●

### UNIRAM™ RC

#### APPLICATIONS

- On surface multi-season row crops, deciduous and tree irrigation

#### SPECIFICATION

- Continuously self flushing
- Pressure compensating

<b>UNIRAM™ RC 16MM X 1.0MM</b>	<b>0110</b>
--------------------------------	-------------

CODE	DESCRIPTION	SIZE	
13730-007000	Z4080 1.6 lph @ 30cm	500m	●
13730-007200	Z4081 1.6 lph @ 40cm	500m	●
13730-007400	Z4082 1.6 lph @ 50cm	500m	●
13730-007520	Z4083 1.6 lph @ 60cm	500m	●
13730-007600	Z4084 1.6 lph @ 75cm	500m	●

### UNIRAM™ XR CNL AND XR HCNL

#### APPLICATIONS

- Sub-surface multi-season crops, turf

#### SPECIFICATION

- Continuously self flushing
- Pressure compensating
- Anti-syphon
- Additional root intrusion protection

<b>UNIRAM™ XR CNL 20MM X 1.2MM</b>	<b>0110</b>
------------------------------------	-------------

CODE	DESCRIPTION	SIZE	
13875-003000	0.85 lph @ 20cm	300m	●

<b>UNIRAM™ XR HCNL 20MM X 1.0MM</b>	<b>0110</b>
-------------------------------------	-------------

CODE	DESCRIPTION	SIZE	
14575-001000	0.85 lph @ 20cm	300m	●

## TECHNICAL DATA

### UNIRAM™ CNL AND XR CNL

FLOW RATE* (L/H)	WORKING PRESSURE RANGE (BAR)	RECOMMENDED FILTRATION (MICRON) / (MESH)	SHUT OFF PRESSURE (BAR)
0.7	1.0 - 4.0	130/120	0.14
1.0	1.0 - 4.0	130/120	0.14
1.6	1.0 - 4.0	130/120	0.14
2.3	1.0 - 4.0	130/120	0.14
3.5	1.0 - 4.0	130/120	0.14

\*Within working pressure range

MODEL	INSIDE DIAMETER (MM)	WALL THICKNESS (MM)	OUTSIDE DIAMETER (MM)	MAX. WORKING PRESSURE (BAR)	MAXIMUM FLUSHING PRESURE (BAR)
16012	14.20	1.20	16.60	4.0	5.2
20010	17.50	1.00	19.50	3.5	4.6
20012	17.50	1.20	19.90	4.0	5.2

### UNIRAM™ RC

FLOW RATE* (L/H)	WORKING PRESSURE RANGE (BAR)	RECOMMENDED FILTRATION (MICRON) / (MESH)
0.7	0.5 - 4.0	130/120
1.0	0.5 - 4.0	130/120
1.6	0.5 - 4.0	200/80
2.3	0.5 - 4.0	200/80
3.5	0.5 - 4.0	200/80

\*Within working pressure range

MODEL	INSIDE DIAMETER (MM)	WALL THICKNESS (MM)	OUTSIDE DIAMETER (MM)	MAX. WORKING PRESSURE (BAR)	MAXIMUM FLUSHING PRESURE (BAR)
016010	14.20	1.00	16.20	3.5	4.6

### UNIRAM™ XR HCNL

FLOW RATE* (L/H)	WORKING PRESSURE RANGE (BAR)	WATER PASSAGES DIMENSIONS WIDTH-DEPTH-LENGTH (MM)	FILTRATION AREA (MM <sup>2</sup> )	CONSTANT K	EXPONENT* X	RECOMMENDED FILTRATION (MICRON)/(MESH)	SHUT OFF PRESSURE (BAR)
0.85	1.5 - 4.0	0.70 x 0.65 x 40	110	0.85	0	130/120	0.25
1.25	1.5 - 4.0	0.83 x 0.74 x 40	130	1.25	0	130/120	0.25
2.0	1.5 - 4.0	1.07 x 0.79 x 40	130	2.00	0	130/120	0.25
2.90	1.5 - 4.0	1.26 x 0.95 x 40	130	2.9	0	130/120	0.25
4.40	1.5 - 4.0	1.59 x 1.10 x 40	150	4.40	0	130/120	0.25

\*Within working pressure range

MODEL	INSIDE DIAMETER (MM)	WALL THICKNESS (MM)	OUTSIDE DIAMETER (MM)	MAX. WORKING PRESSURE (BAR)	MAXIMUM FLUSHING PRESURE (BAR)
20010	17.50	1.00	19.50	3.5	4.6

# DRIP IRRIGATION

## PRESSURE COMPENSATED DRIPPERLINES

### DRIPNET PC™

#### HIGH QUALITY DRIPPERLINE AVAILABLE IN MULTIPLE WALL THICKNESSES INCORPORATING IN-LINE, PRESSURE-COMPENSATING & CONTINUOUSLY SELF-FLUSHING DRIPPER

##### FEATURES & BENEFITS:

Pressure compensated to ensure precise and equal amounts of water are delivered over a wide pressure range resulting in 100% uniformity of water and nutrient distribution along the laterals.

TurboNet™ labyrinth assures wide water passages and the large deep and wide cross-section improves clogging resistance.

Continuously self-flushing system with wide filtration area flushes debris as it is detected throughout operation even when using low quality water.

The design of the dripper draws the water from the stream centre, preventing the entrance of sediments into the dripper.

Injected dripper manufactured with a very low Coefficient of Variation resulting in consistent quality and uniform application.

High quality injected silicon diaphragm resulting in optimum flow control.

Netafim™ dripperlines meet ISO 9261 Standards with production certified by the Israel Standards Institute (SII).

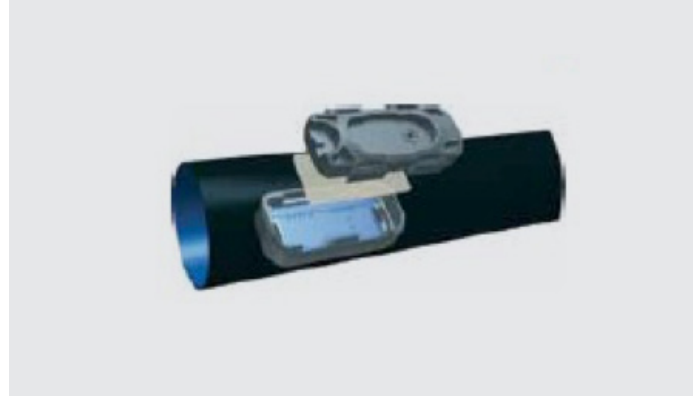
Available from UK stock in 0.34mm, 1mm and 1.2mm wall thickness. Other variants available on request.

High UV resistance and resistant to standard nutrients used in agricultural.

#### DRIPNET PC™ DRIPPERLINES ARE AVAILABLE IN TWO TECHNOLOGY VARIANTS TO BE SELECTED BASED UPON THE SPECIFIC APPLICATION:

**PC** Pressure compensated dripper ensuring uniform application

**AS** Pressure compensated dripper with anti-syphon mechanism preventing ingress of contaminants



## DRIPNET PC

### DRIPNET PC™ 16MM X 1.0MM 0125

#### APPLICATIONS

- On surface multi-season row crops

#### SPECIFICATION

- Continuously self flushing
- Pressure compensating

CODE	DESCRIPTION	SIZE	
17665-000547	0.6 lph @ 30cm	500m	●
17665-001625	Z4336 1.0 lph @ 30cm	500m	●
17665-001820	Z4337 1.0 lph @ 40cm	500m	●
17665-001875	Z4338 1.0 lph @ 50cm	500m	●
17655-002060	Z4339 1.0 lph @ 60cm	500m	●
17665-006470	1.60 lph @ 40cm	500m	●
17665-006860	Z4211 1.60 lph @ 60cm	500m	●

### DRIPNET PC™ 20MM X 1.2MM 0130

#### APPLICATIONS

- Sub surface multi-season row crops

#### SPECIFICATION

- Continuously self flushing
- Pressure compensating

CODE	DESCRIPTION	SIZE	
17725-001390	0.6 lph @ 0.40cm	4500m	●

### DRIPNET PC™ 20MM X 1.0MM 0125

CODE	DESCRIPTION	SIZE	
17690-001100	0.6 lph @ 30cm	300m	●
17690-002500	1.0 lph @ 50cm	300m	●

### DRIPNET PC™ AS 16MM X 1.0MM 0130

#### APPLICATIONS

- Sub surface multi-season row crops

#### SPECIFICATION

- Continuously self flushing
- Pressure compensating
- Anti-syphon

CODE	DESCRIPTION	SIZE	
17705-002800	1.0 lph @ 30cm	500m	●

## DRIPNET PC 0.31MM

### DRIPNET PC™ 16MM X 0.31MM 0130

#### APPLICATIONS

- On surface multi-season row crops

#### SPECIFICATION

- Continuously self flushing
- Pressure compensating

CODE	DESCRIPTION	SIZE	
17600-001914	0.6 lph @ 20cm	1150m	●
17600-002101	0.6 lph @ 30cm	1150m	●
17600-003825	1.0 lph @ 20cm	1150m	●
17600-004105	1.0 lph @ 30cm	1150m	●

# DRIP IRRIGATION

## PRESSURE COMPENSATED DRIPPERLINES

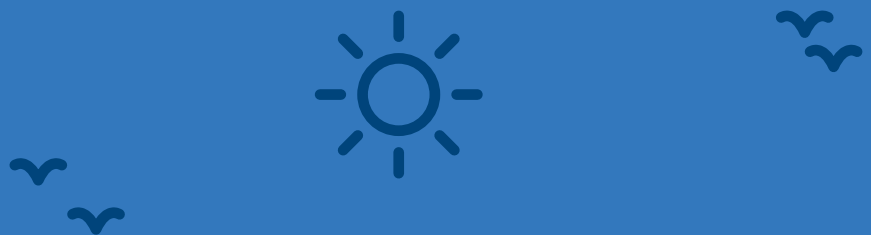
### TECHNICAL DATA

DRIPNET™ PC THINWALL AND HEAVYWALL		
FLOW RATE* (L/H)	WORKING PRESSURE RANGE (BAR)	RECOMMENDED FILTRATION (MICRON) / (MESH)
0.4	0.25 - 2.5	130/120
0.6	0.25 - 2.5	130/120
1.0	0.40 - 3.0	130/120
1.6	0.40 - 3.0	200/90

\*Within working pressure range

DRIPPERLINES TECHNICAL DATA					
MODEL	INSIDE DIAMETER (MM)	WALL THICKNESS (MM)	OUTSIDE DIAMETER (MM)	MAX. WORKING PRESSURE (BAR)	MIN. FLUSHING PRESSURE (BAR)
16010	14.20	1.00	16.20	2.5/3.0/3.5*	3.9
20010	17.50	1.00	19.50	2.5/3.0/3.5*	3.9
20012	17.50	1.20	19.90	2.5/3.0/3.5*	3.9

DRIPPERLINES TECHNICAL DATA					
MODEL	INSIDE DIAMETER (MM)	WALL THICKNESS (MM)	OUTSIDE DIAMETER (MM)	MAX. WORKING PRESSURE (BAR)	MIN. FLUSHING PRESSURE (BAR)
16125	16.20	0.31	16.82	1.8	2.1





# DRIP IRRIGATION

## LANDSCAPE DRIPLINE

### TECHNET™, UNITECHLINE™ AND TECHLINE™

#### PREMIUM LANDSCAPE DRIPPERLINE INCORPORATING IN-LINE, PRESSURE-COMPENSATING & CONTINUOUSLY SELF-CLEANING DRIPPER

##### FEATURES & BENEFITS:

Specifically designed for landscape applications, this premium dripperline is available in dark brown as specified by landscape designers and architects.

Pressure compensated to ensure precise and equal amounts of water are delivered over a wide pressure range resulting in 100% uniformity of water and nutrient distribution along the laterals.

Double TurboNet™ labyrinth assures wide water passages and the large deep and wide cross section improves clogging resistance.

Continuously self-flushing system with wide filtration area flushes debris as it is detected throughout operation even when using low quality water.

Design of the dripper draws the water from the stream centre preventing the entrance of sediments into the dripper.

Physical root barrier provides the ultimate protection against root intrusion without reliance on chemicals.

Injected dripper manufactured with a very low Coefficient of Variation resulting in consistent quality and uniform application.

High quality injected silicon diaphragm resulting in optimum flow control.

Netafim™ dripperlines meet ISO 9261 Standards with production certified by the Israel Standards Institute (SII).

#### LANDSCAPE DRIPPERLINES ARE AVAILABLE IN THREE TECHNOLOGY VARIANTS TO BE SELECTED BASED UPON THE SPECIFIC APPLICATION:

- AS** Pressure compensated dripper with anti-syphon mechanism preventing ingress of contaminants
- CV** Pressure compensated dripper with non-leakage functionality facilitating pulse irrigation
- AS XR** AS dripper with integrated copper oxide anti-root intrusion system



# DRIP IRRIGATION

## LANDSCAPE DRIPLINE

### TECHLINE CV

#### TECHLINE™ CV 16MM X 1.2MM 0175

##### APPLICATIONS

- On and sub surface, slopes, roof gardens, planters

##### SPECIFICATION

- Continuously self cleaning
- Pressure compensating
- Anti-syphon
- Anti-drain

CODE		DESCRIPTION	SIZE	
14705-003300	Z4708	2.3 lph @ 30cm	100m	●

### UNITECHLINE™ AS

#### UNITECHLINE™ AS 16MM X 1.2MM 0175

##### APPLICATIONS

- On and sub surface, slopes, roof gardens, planters

##### SPECIFICATION

- Continuously self cleaning
- Pressure compensating
- Anti-syphon

CODE		DESCRIPTION	SIZE	
14690-002500	Z4713	1.6 lph @ 30cm	100m	●
14690-003500	Z4714	2.3 lph @ 30cm	100m	●
14690-003800	Z4716	2.3 lph @ 50cm	100m	●

### TECHNET™ AS

#### TECHNET™ AS 16MM X 1.0MM 0175

##### APPLICATIONS

- On surface, or under mulch, sub surface, roof gardens, planters

##### SPECIFICATION

- Continuously self cleaning
- Pressure compensating
- Anti-syphon

CODE		DESCRIPTION	SIZE	
17679-004380	Z4702	1.6 lph @ 30cm	25m	●
17679-004400	Z4700	1.6 lph @ 30cm	100m	●
17679-004600	Z4703	1.6 lph @ 50cm	100m	●

### UNITECHLINE™ AS XR

#### UNITECHLINE™ AS XR 16MM X 1.2MM 0175

##### APPLICATIONS

- On and sub surface, slopes, roof gardens, planters

##### SPECIFICATION

- Continuously self cleaning
- Pressure compensating
- Anti-syphon
- Additional root intrusion protection

CODE		DESCRIPTION	SIZE	
TBA		2.3 lph @ 30cm	100m	●

## TECHNICAL DATA

### TECHLINE™ CV

FLOW RATE* (L/H)	WORKING PRESSURE RANGE (BAR)	RECOMMENDED FILTRATION (MICRON) / (MESH)
2.3	1.0 - 4.0	130/120

\*Within working pressure range

### UNITECHLINE™ AS

FLOW RATE* (L/H)	WORKING PRESSURE RANGE (BAR)	RECOMMENDED FILTRATION (MICRON) / (MESH)
1.6	0.5 - 4.0	130/120
2.3	0.5 - 4.0	130/120

\*Within working pressure range

### TECHNET™ AS

FLOW RATE* (L/H)	WORKING PRESSURE RANGE (BAR)
1.6	0.5 - 4.0

\*Within working pressure range

### TECHLINE™ CV

MODEL	INSIDE DIAMETER (MM)	WALL THICKNESS (MM)	OUTSIDE DIAMETER (MM)	MAX. WORKING PRESSURE (BAR)
16012	14.20	1.20	16.60	4.0

### TECHLINE™ CV

MODEL	INSIDE DIAMETER (MM)	WALL THICKNESS (MM)	OUTSIDE DIAMETER (MM)	MAX. WORKING PRESSURE (BAR)
16012	14.20	1.20	16.60	4.0

### TECHNET™ AS

MODEL	INSIDE DIAMETER (MM)	WALL THICKNESS (MM)	OUTSIDE DIAMETER (MM)	MAX. WORKING PRESSURE (BAR)
16100	14.20	1.00	16.20	3.5



# DRIP IRRIGATION

## NON COMPENSATED DRIPPERLINES

### ARIES™

#### HIGH QUALITY DRIPPERLINE INCORPORATING NEXT GENERATION IN-LINE, NON-COMPENSATING DRIPPER

##### FEATURES & BENEFITS:

Newly developed TurbuNext™ labyrinth creates wide water passages and the large deep and wide cross-section improves clogging resistance.

Large form factor dripper designed to facilitate wide range of flow rate options.

The design of the dripper draws the water from the stream centre, preventing the entrance of sediments into the dripper.

Injected dripper manufactured with a very low Coefficient of Variation resulting in consistent quality and uniform application.

Class leading integrated dripper filter to ensure optimal performance even when using low quality water.

High UV resistance and resistant to standard nutrients used in agricultural.

Netafim™ dripperlines meet ISO 9261 Standards with production certified by the Israel Standards Institute (SII).

Available from UK stock in 1mm wall thickness. Other variants available on request.



ARIES™ 16MM X 1.0MM	0120	CODE	DESCRIPTION	SIZE	
<b>APPLICATIONS</b>		<b>12820-002400</b>	2.00 lph @ 20cm	500m	●
<ul style="list-style-type: none"> <li>On surface multi-season crops, deciduous plantation and tree irrigation</li> </ul>		<b>12820-002600</b>	2.00 lph @ 30cm	500m	●

## TECHNICAL DATA

FLOW RATE* (L/H)	WORKING PRESSURE RANGE (BAR)	RECOMMENDED FILTRATION (MICRON) / (MESH)	MODEL	INSIDE DIAMETER (MM)	WALL THICKNESS (MM)	OUTSIDE DIAMETER (MM)	MAX. WORKING PRESSURE (BAR)	MIN. FLUSHING PRESSURE (BAR)	KD
2.00	3.5	130/120	<b>16010</b>	14.20	1.00	16.20	3.5	4.6	0.40

\*Flow rate at 1.0 bar and according to dripperline diameter and wall thickness

# TYPHOON PLUS™

## HIGH QUALITY DRIPPERLINE INCORPORATING NEXT GENERATION IN-LINE, NON-COMPENSATING DRIPPER

### FEATURES & BENEFITS:

Newly developed TurbuNext™ labyrinth assures wide water passages and the large deep and wide cross-section improves clogging resistance.

The design of the dripper draws the water from the stream centre, preventing the entrance of sediments into the dripper.

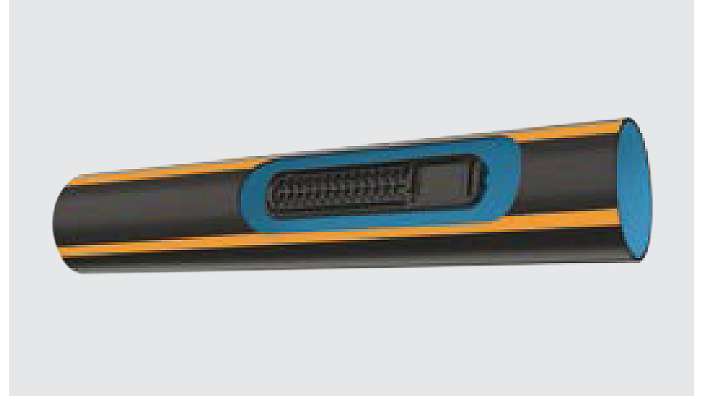
Injected dripper manufactured with a very low Coefficient of Variation resulting in consistent quality and uniform application.

Class leading integrated dripper filter to ensure optimal performance even when using low quality water.

High UV resistance and resistant to standard nutrients used in agricultural.

Netafim™ dripperlines meet ISO 9261 Standards with production certified by the Israel Standards Institute (SII).

Available from UK stock in 0.2 mm wall thickness. Other variants available on request.



<b>TYPHOON PLUS™ 16MM X 0.20MM/8 MIL</b>	<b>0135</b>
--	-------------

### APPLICATIONS

- Multi-season row crops and vegetables, on or semi permanent sub surface

CODE	DESCRIPTION	SIZE	
TBA	0.5 lph @ 20cm	2400m	●
TBA	0.5 lph @ 30cm	2500m	●
TBA	0.5 lph @ 40cm	2500m	●

## TECHNICAL DATA

FLOW RATE* (L/H)	WORKING PRESSURE RANGE (BAR)	RECOMMENDED FILTRATION (MICRON) / (MESH)
0.50	1.0	130/120

MODEL	INSIDE DIAMETER (MM)	WALL THICKNESS (MM)	OUTSIDE DIAMETER (MM)	MAX. WORKING PRESSURE (BAR)	MIN. FLUSHING PRESSURE (BAR)
16080	16.20	0.20	16.60	1.0	1.2

\*Flow rate at 1.0 Bar and according to dripperline diameter and wall thickness

# DRIP IRRIGATION

## NON COMPENSATED DRIPPERLINES

### STREAMLINE PLUS™

**IMPROVED AND UPDATED VERSION OF NETAFIM'S BEST-SELLING, WORLD LEADING, SINGLE SEASON DRIPPERLINE.**

#### FEATURES & BENEFITS:

TurboNet™ labyrinth assures wide water passages and the large deep and wide cross-section improves clogging resistance.

Stronger pipe using an exclusive raw material blend enabling higher operating pressure and increased tensile strength.

Increased tensile strength simplifies installation and reduces risk of mechanical damage.

Higher operating pressure enables increased length of laterals.

Two orange stripes on the dripper side allows easy identification of the dripper position to assist with correct installation.

The design of the dripper draws the water from the stream centre, preventing the entrance of sediments into the dripper.

Injected dripper manufactured with a very low Coefficient of Variation resulting in consistent quality and uniform application.

Wide dripper filtration area to ensure optimum performance.

High UV resistance and resistant to standard nutrients used in agricultural.

Netafim™ dripperlines meet ISO 9261 Standards with production certified by the Israel Standards Institute (SII).

Available from UK stock in 0.15mm and 0.2 mm wall thickness. Other variants available on request.



#### STREAMLINE PLUS™ 16MM X 0.20MM/8 MIL 0135

##### APPLICATIONS

- Single season crops

CODE	DESCRIPTION	SIZE	
16230-004969	1.05 lph @ 10cm	1000m	●
16230-004981	1.05 lph @ 15cm	1000m	●
16230-005009	1.05 lph @ 20cm	1000m	●
16230-003995	0.72 lph @ 20cm	2200m	●
16230-005010	1.05 lph @ 20cm	2200m	●
16230-005051	1.05 lph @ 30cm	1000m	●
16230-004010	0.72 lph @ 30cm	2500m	●
16230-005060	1.05 lph @ 30cm	2500m	●

#### STREAMLINE PLUS™ 16MM X 0.15MM/6 MIL 0135

##### APPLICATIONS

- Single season crops

CODE	DESCRIPTION	SIZE	
16225-004990	0.8 lph @ 20cm	2600m	●
16225-005210	1.1 lph @ 20cm	2600m	●
16225-005010	0.8 lph @ 30cm	3000m	●
16225-005230	1.1 lph @ 30cm	3000m	●

## TECHNICAL DATA

### 8 MIL

FLOW RATE* (L/H)	WORKING PRESSURE RANGE (BAR)	RECOMMENDED FILTRATION (MICRON) / (MESH)
0.72	1.0	130/120
1.05	1.0	130/120

\*Flow rate at 1.0 Bar pressure and according to dripperline diameter and wall thickness

MODEL	INSIDE DIAMETER (MM)	WALL THICKNESS (MM)	OUTSIDE DIAMETER (MM)	MAX. WORKING PRESSURE (BAR)	MIN. FLUSHING PRESSURE (BAR)
16080	16.20	0.20	16.60	1.2	1.4

### 6 MIL

FLOW RATE* (L/H)	WORKING PRESSURE RANGE (BAR)	RECOMMENDED FILTRATION (MICRON) / (MESH)
0.80	1.0	130/120
1.10	1.0	130/120

\*Within working pressure range and according to dripperline diameter and wall thickness

MODEL	INSIDE DIAMETER (MM)	WALL THICKNESS (MM)	OUTSIDE DIAMETER (MM)	MAX. WORKING PRESSURE (BAR)	MIN. FLUSHING PRESSURE (BAR)
16060	16.20	0.15	16.50	1.0	1.2



# DRIP IRRIGATION

## DRIPPERLINE FITTINGS

### THINWALL DRIPLINE FITTINGS 0105

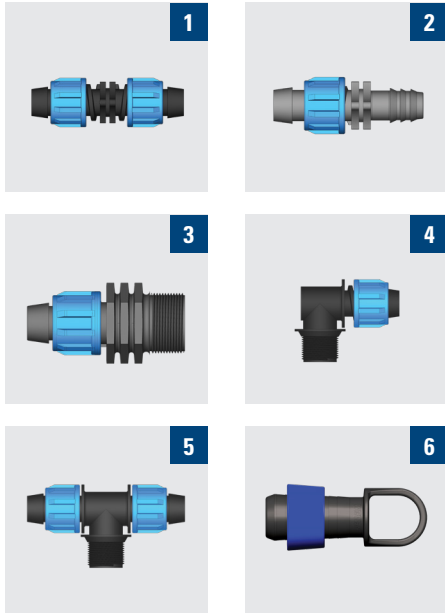


IMAGE	CODE		DESCRIPTION	
1	32500-016010	Z3431	16mm T Tape Coupling	●
2	32500-016090	Z3432	16mm T Tape PE Adaptor	●
3	32500-016020		16mm x 1/2" Male Nut Twist Adaptor	●
3	32500-016030		16mm x 3/4" Male Nut Twist Adaptor	●
4	32500-011380		16mm x 1/2" Male Nut Lock Elbow	●
5	32500-011370		16mm x 1/2" Male Nut Lock Tee	●
6	32500-016460		Ring End Line 16W/Ring	●
	32500-018300	Z2405	Start Connector PVC Barbed 10/13/16 MT	●

### PUSH FIT SOCKET BARBED 0560

#### APPLICATIONS

- All fittings are manufactured from acetal
- Max pressure is 8.0kg/cm<sup>2</sup>
- Threads are BSPT
- Creates very strong connections



CODE		DESCRIPTION	
32500-002200	Z2455	12	●
32500-010700	Z2457	16	●
32500-003800	Z2459	17	●
32500-007600	Z2462	20	●
32500-021500	Z2464	25	●
32500-010800	Z2456	16 x 12	●
32500-004100	D450662	17 x 12	●
32500-004250	Z2458	17 x 16	●
32500-007900	Z2460	20 x 16	●
32500-004300	Z2461	20 x 17	●
32500-014830	Z2463	25 x 20	●

### PUSH FIT END PLUG 0560

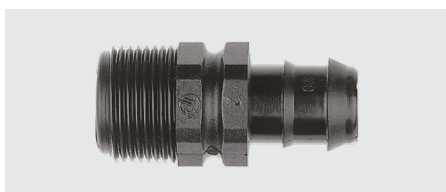


CODE		DESCRIPTION	
32500-003505	Z2547A	12	●
32500-014440	Z2547B	16	●
32500-014350	Z2547C	17	●
32500-014450	Z2547D	20	●



**PUSH ADAPTOR BARBED X MALE  
THREAD**

**0560**



CODE		DESCRIPTION	
32500-002300	Z2485	12 x 1/2"	●
32500-002400	Z2486	12 x 3/4"	●
32500-010900	Z2487	16 x 1/2"	●
32500-011000	Z2488	16 x 3/4"	●
32500-004400	Z2489	17 x 1/2"	●
32500-004490	Z2490	17 x 3/4"	●
32500-008000	Z2491	20 x 1/2"	●
32500-008100	Z2492	20 x 3/4"	●
32500-014801	Z2494	25 x 1/2"	●
32500-014825	Z2493	25 x 3/4"	●

**PUSH FIT ADAPTOR BARBED X  
FEMALE THREAD**

**0560**



CODE		DESCRIPTION	
76200-002120	Z2500	12 x 3/4"	●
32500-011100	Z2501	16 x 3/4"	●
32500-008270	Z2502	20 x 3/4"	●

**PUSH FIT ELBOW**

**0560**



CODE		DESCRIPTION	
32500-003200	Z2505	12	●
32500-012500	Z2506	16	●
32500-005900	Z2507	17	●
32500-010000	Z2508	20	●
32500-022600	Z2509	25	●

**PUSH FIT TEE BARBED X MALE  
THREAD X BARBED**

**0560**



CODE		DESCRIPTION	
32500-003300	Z2503	12 x 1/2"	●
32500-003400	Z2495	12 x 3/4"	●
32500-012700	Z2504	16 x 1/2"	●
32500-012800	Z2496	16 x 3/4"	●
32500-006000	Z2514	17 x 1/2"	●
32500-006100	Z2497	17 x 3/4"	●
32500-014500	Z2516	20 x 1/2"	●
32500-010100	Z2498	20 x 3/4"	●
32500-022650	Z2520	25 x 1/2"	●
32500-022700	Z2499	25 x 3/4"	●

# DRIP IRRIGATION

## DRIPPERLINE FITTINGS

### PUSH FIT TEE BARBED 0560



CODE		DESCRIPTION	
32500-002500	Z2465	12	●
32500-002600	Z2466	12 x 16	●
32500-011300	Z2468	16	●
32500-004900	Z2470	17	●
32500-005000	Z2469	17 x 16	●
32500-008400	Z2473	20	●
32500-023700	Z2474	25	●
32500-014850	Z2521	25 x 20	●
32500-011400	Z2467	16 x 12	●
32500-008500	Z2471	20 x 12	●
32500-008600	Z2472	20 x 16	●

### PUSH FIT TEE BARBED X MALE THREADED X BARBED 0135



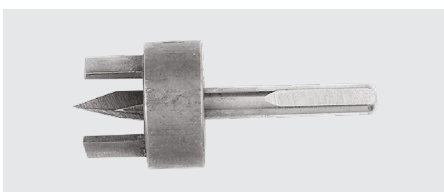
CODE		DESCRIPTION	
32500-002310	Z2475	12 x 1/2"	●
32500-002700	Z2475A	12 x 3/4"	●
32500-011600	Z2483	16 x 1/2"	●
32500-011800	Z2476	16 x 3/4"	●
32500-004450	Z2477	17 x 1/2"	●
32500-004800	Z2478	17 x 3/4"	●
32500-014550	Z2479	20 x 1/2"	●
32500-008800	Z2480	20 x 3/4"	●
32500-023790	Z2522	25 x 1/2"	●
32500-023800	Z2481	25 x 3/4"	●

### PUSH FIT Y PIECE 2 WAY BARBED X MALE 0560



CODE		DESCRIPTION	
32500-002800	Z2510	12 x 3/4"	●
32500-011200	Z2511	16 x 3/4"	●
32500-004600	Z2512	17 x 3/4"	●
32500-008300	Z2513	20 x 3/4"	●
32500-002820	Z2515	12 x 3/4"	●
32500-012400	Z2519	16 x 3/4"	●
32500-009000	Z2518	20 x 3/4"	●

### DRILL 0135



CODE		DESCRIPTION	
45000-003200	Z2547	Drill	●

**PUSH FIT 3 WAY BARBED X FEMALE  
THREAD**

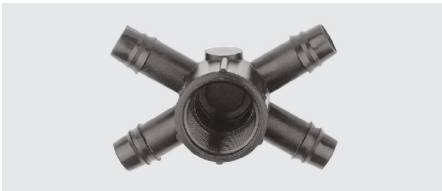
**0560**



CODE		DESCRIPTION	
32500-002900	Z2525	12 x 3/4"	●
32500-011900	Z2526	16 x 3/4"	●
32500-005100	Z2527	17 x 3/4"	●
32500-009100	Z2528	20 x 3/4"	●
32500-009500	D450953	20 x 1"	●

**PUSH FIT 4 WAY BARBED X FEMALE  
THREAD**

**0135**



CODE		DESCRIPTION	
32500-003000	Z2530	12 x 3/4"	●
32500-012100	Z2531	16 x 3/4"	●
32500-005300	Z2532	17 x 3/4"	●
32500-009200	Z2533	20 x 3/4"	●
32500-009600	D450960	20 x 1"	●

**PUSH FIT 6 WAY BARBED X FEMALE  
THREAD**

**0560**



CODE		DESCRIPTION	
32500-012300	Z2536	16 x 3/4"	●
32500-009300	Z2538	20 x 3/4"	●
32500-009800	D450995	20 x 1"	●

**PUSH FIT GROMMET TAKE OFF**

**0135**



CODE		DESCRIPTION	
32500-024000	Z2540	12mm standard	●
32500-013700	Z2541	16mm standard	●
32500-006700	Z2543	17mm standard	●
32500-010300	Z2545	20mm standard	●
32500-013770	Z2387	16mm stock start	●
32500-010470	Z2389	20mm stick start	●
32500-010450	Z2385	Stick start spare grommet	●
32000-007000		Standard spare grommet	

**DRIPPERLINE FIGURE OF 8 STOP**

**0560**



CODE		DESCRIPTION	
02380-999249	Z4966	12	●
32500-013000	Z4980	16	●
32500-014400	Z2399	20	●

# DRIP IRRIGATION

## ONLINE PRESSURE COMPENSATED DRIPPERS

### PRESSURE COMPENSATED ANTI-DRAIN DRIPPERS

#### COMPACT ON-LINE, PRESSURE-COMPENSATING, ANTI-DRAIN & CONTINUOUSLY SELF-CLEANING DRIPPER

##### FEATURES & BENEFITS:

Pressure compensated to ensure precise and equal amounts of water are delivered over a wide pressure range resulting in 100% uniformity of water and nutrient distribution along the laterals.

TurboNet™ labyrinth assures wide water passages with the large deep and wide cross section improves clogging resistance.

Continuously self-flushing system with wide filtration area flushes debris as it is detected throughout operation even when using low quality water.

LCNL and HCNL models with Anti-Drain eliminates drainage and refill effect ensuring constant operation and improves the efficiency of pulse irrigation.

Injected dripper manufactured with a very low Coefficient of Variation resulting in consistent quality and uniform application

Can be installed with leads and manifolds allowing use in a multitude of applications.

PCJ On-Line drippers meet ISO 9261 Standards with production certified by the Israel Standards Institute (SII).

High UV resistance and resistant to standard nutrients used in agricultural.

#### PCJ DRIPPERS ARE AVAILABLE IN TWO TECHNOLOGY VARIANTS AND TWO EMISSION TYPES TO BE SELECTED BASED UPON THE SPECIFIC APPLICATION:

- LCNL** Pressure compensated dripper with non-leakage functionality facilitating pulse irrigation
- HCNL** Pressure compensated dripper with non-leakage functionality facilitating pulse irrigation with higher closing pressure suitable for use on sloping sites
- Barbed** Connection with 3mm barb for attachment of microtubes and leads
- Nipple** Designed to emit water droplets directly from the dripper



**PCJ LCNL BARBED****0105****APPLICATIONS**

- On surface, or under mulch, sub surface, roof gardens, planters

**SPECIFICATION**

- Continuously self cleaning
- Pressure compensating
- Anti-syphon



CODE		DESCRIPTION	
21520-000900	D456486	1.2 lph	●
21520-001000	Z5260	2.0 lph	●
21520-001200	Z5262	3.0 lph	●
21520-001400	Z5265	4.0 lph	●
21520-001600	Z3270	8.0 lph	●
21520-001670		12.0 lph	●

**PCJ LCNL NIPPLE****0140**

CODE		DESCRIPTION	
21520-001100	Z5275	2.0 lph	●
21520-001300	Z5276	3.0 lph	●
21520-001500	Z5280	4.0 lph	●
21520-001700	Z5277	8.0 lph	●

**PCJ HCNL BARBED****0140**

CODE		DESCRIPTION	
21520-003870		0.5 lph	●
21520-004100	Z5246	1.2 lph	●
21520-004400	Z5247	2.0 lph	●
21520-004700	Z5248	3.0 lph	●
21520-005000	Z5249	4.0 lph	●



## TECHNICAL DATA PRESSURE COMPENSATED

PCJ-HCNL				
FLOW RATE* (L/H)	WORKING PRESSURE RANGE (BAR)	SHUT OFF PRESSURE (BAR)	BASE CODE COLOUR**	CAP CODE COLOUR
0.5	1.5 - 4.0	0.18	Light Yellow	Black
1.2	1.5 - 4.0	0.18	Light Brown	Black
2.0	1.5 - 4.0	0.18	Pink	Black
3.0	1.5 - 4.0	0.18	Light Blue	Black
4.0	1.5 - 4.0	0.18	Light Gray	Black

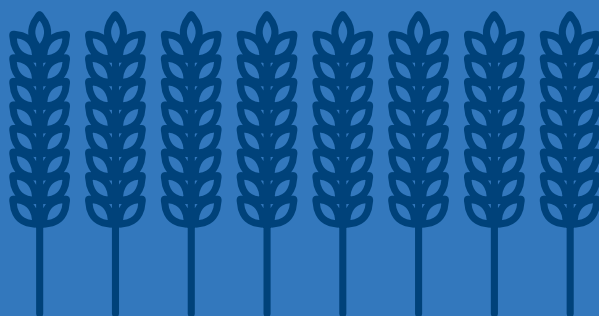
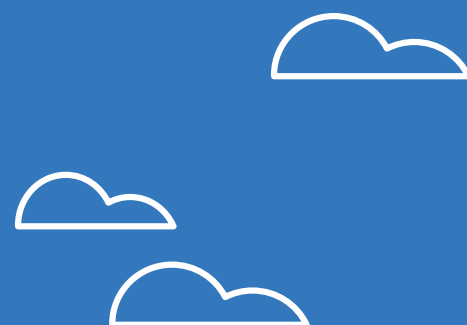
PCJ-LCNL				
FLOW RATE* (L/H)	WORKING PRESSURE RANGE (BAR)	SHUT OFF PRESSURE (BAR)	BASE CODE COLOUR**	CAP CODE COLOUR
0.5	0.7 - 4.0	0.12	Mustard	Black
1.2	0.7 - 4.0	0.12	Brown	Black
2.0	0.7 - 4.0	0.12	Red	Black
3.0	0.7 - 4.0	0.12	Blue	Black
4.0	0.7 - 4.0	0.12	Gray	Black
8.0	0.7 - 4.0	0.12	Green	Black
12.0	0.7 - 4.0	0.12	Fuchsia	Black
15.0	0.7 - 4.0	0.12	Black	Black

\*Within working pressure range

\*\*Recommended filtration 130 micron / 120 mesh

PC-HCNL DRIPPERS				
FLOW RATE* (L/H)	WORKING PRESSURE RANGE (BAR)	SHUT OFF PRESSURE (BAR)	BASE CODE COLOUR**	CAP CODE COLOUR
4.0	1.4 - 4.0	0.30	Black	Black
6.0	1.4 - 4.0	0.30	Black	Black
12.0	1.4 - 4.0	0.30	Black	Black

PC-LCNL DRIPPERS				
FLOW RATE* (L/H)	WORKING PRESSURE RANGE (BAR)	SHUT OFF PRESSURE (BAR)	BASE CODE COLOUR**	CAP CODE COLOUR
2.0	1.0 - 4.0	0.15	Red	Brown
4.0	1.0 - 4.0	0.15	Black	Brown
12.0	1.0 - 4.0	0.15	Green	Brown



# DRIP IRRIGATION

## ONLINE PRESSURE COMPENSATED DRIPPERS

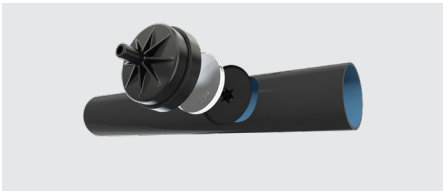
### PRESSURE COMPENSATED ANTI-DRAIN DRIPPERS

#### PC LCNL 0140



CODE		DESCRIPTION	
21020-001300	Z5200	2.0 lph	●
21020-001400	Z5205	4.0 lph	●
21020-001500	Z5210	8.5 lph	●

#### PC HCNL 0140



CODE		DESCRIPTION	
21060-001000	Z5215	3.0 lph	●
21060-001200	Z5220	6.0 lph	●
21060-001300	Z5225	12.0 lph	●

#### TECHFLOW JUNIOR INLINE BARB 0140



CODE		DESCRIPTION	
21600-001800	Z5298C	2.0 lph	●
21600-001900	Z5298B	3.0 lph	●
21600-002000	Z5298A	4.0 lph	●
21600-002100	Z5298	8.0 lph	●
21000-001900	Z5226	25.0 lph	●

# DRIP IRRIGATION

## ONLINE NON COMPENSATED DRIPPERS

### ONLINE DRIPPER

#### FEATURES & BENEFITS:

TurboNet™ labyrinth assures wide water passages and the large deep and wide cross section improves clogging resistance.

Can be installed with leads and manifolds allowing use in a multitude of applications.

Injected dripper manufactured with a very low Coefficient of Variation resulting in consistent quality and uniform application.

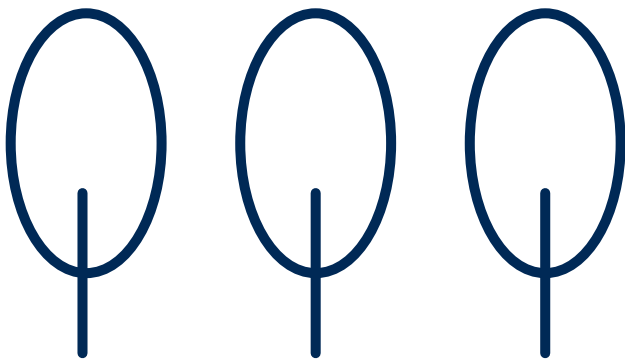
#### NON-PC DRIPPERS ARE AVAILABLE IN FOUR TECHNOLOGY VARIANTS TO BE SELECTED BASED UPON THE SPECIFIC APPLICATION:

Pot dripper with flat outlet

Pot dripper with nipple outlet or potpecker dripper

Button dripper with flat outlet

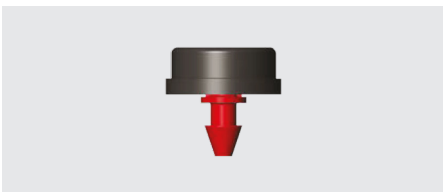
Button dripper with barbed outlet or woodpecker dripper





**POT DRIPPERS FLAT OUTLET****0150**

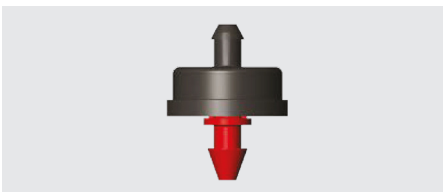
CODE		DESCRIPTION	
20500-001100	Z5505	2.0 lph - Flat Outlet	●
20500-001200	Z5510	4.0 lph - Flat Outlet	●
20500-001300	Z5515	8.0 lph Flat Outlet	●

**BUTTON DRIPPER FLAT OUTLET****0150**

CODE		DESCRIPTION	
20000-001100	Z5525	2.0 lph - Flat Outlet	●
20000-001200	Z5530	4.0 lph - Flat Outlet	●
20000-001300	Z5535	8.0 lph - Flat Outlet	●

**POT DRIPPER NIPPLE OUTLET****0150**

CODE		DESCRIPTION	
20520-001100	Z5565	2.0 lph - Nipple Outlet	●
20520-001200	Z5570	4.0 lph - Nipple Outlet	●

**BUTTON DRIPPER 3MM BARBED OUTLET****0150**

CODE		DESCRIPTION	
20020-001500	Z5545	2.0 lph - Barbed Outlet	●
20020-001600	Z5550	4.0 lph - Barbed Outlet	●
20020-001700	Z5555	8.0 lph - Barbed Outlet	●

**BUTTON DRIPPER NIPPLE OUTLET****0150**

CODE		DESCRIPTION	
20020-001100	Z5536	2.0 lph - Nipple Outlet	●
20020-001200	Z5537	4.0 lph - Nipple Outlet	●

# DRIP IRRIGATION

## ONLINE NON COMPENSATED DRIPPERS

### TECHNICAL DATA NON-PRESSURE COMPENSATED

#### BUTTON DRIPPERS

FLOW RATE* (L/H)	WORKING PRESSURE RANGE (BAR)	BASE CODE COLOUR**	CAP CODE COLOUR
2.00	2.0	Red	Black
3.00	2.0	Blue	Black
4.00	2.0	Black	Black
8.00	2.0	Green	Black

\*Flow rate at 1.0 bar pressure

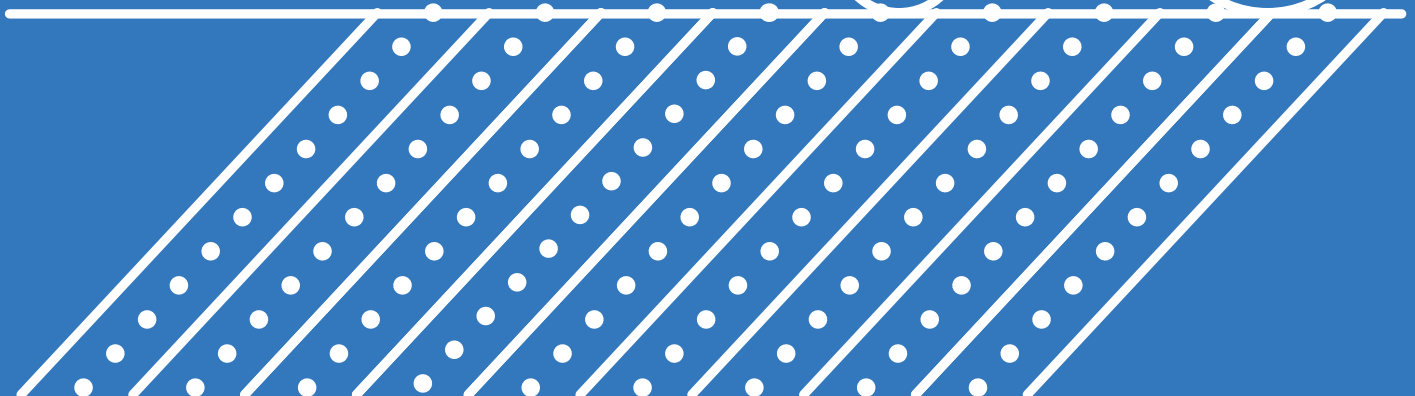
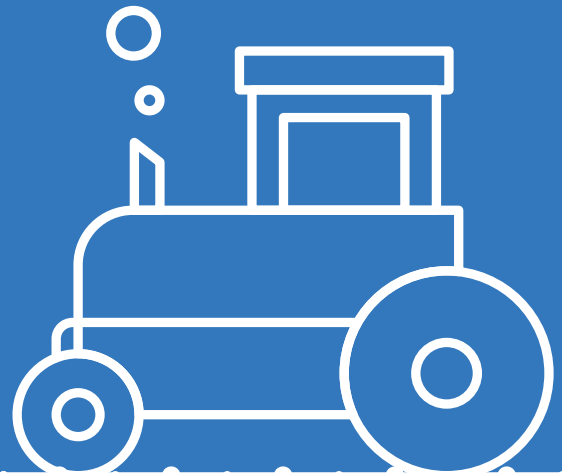
\*\*Recommended filtration 130 micron / 120 mesh



#### POT DRIPPERS

FLOW RATE* (L/H)	WORKING PRESSURE RANGE (BAR)	BASE CODE COLOUR**	CAP CODE COLOUR
2.0	2.0	Red	Black
4.0	2.0	Black	Black
8.0	2.0	Green	Black

\*Flow rate at 1.0 bar pressure

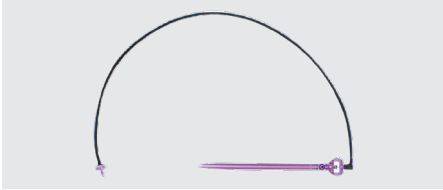


# DRIP IRRIGATION

## SPRAY STAKES

### PRESSURE COMPENSATED SPRAY STAKES

0155



- High flow rates to supply correct irrigation in large pots/growing bags.
- PC spray stake is ideal for any application in which a soil wetting mini spray pattern is desired.
- PC spray stake is manufactured with UV resistant resin to provide years of trouble-free service in both indoor and outdoor applications.
- Optional CNL (anti drain system).

CODE		DESCRIPTION	
40200-035050	Z5740	12ltr PC Spray stake 80cm lead complete	●
40200-036020		Fuchsia 180' Spraystake with Elbow	●
02094-463005		12ltr Bubbler CNL + 80cm lead	●
22500-002030	Z5750	Fuchsia 180' Spraystake (Bag of 50)	●

NOMINAL FLOW RATE (L/H)*	SPRAY STAKE COLOUR CODE	SPREAD DESCRIPTION	AVERAGE WETTED RADIUS (M)**	FLOW REGULATOR CODE COLOUR
12	Fuchsia	One side	0.22-0.25	Fuchsia + Black

### NON PRESSURE COMPENSATED SPRAY STAKES

0150

- A visible and touch spray direction indicator for faster and more accurate installation.
- A close-off feature with tube close off nipple prevents dirt entering the tube and creates a clear indication that the stake is closed off.
- Colour coded for easy identification.
- Can be installed with Netafim On-Line PC drippers to add pressure compensation and anti-drains capabilities.

CODE		DESCRIPTION	
22500-001000	Z5587	12.0 lph Yellow Spray Stake	●
22500-001100	Z5586	17.0 lph Green Spray Stake	●

# DRIP IRRIGATION

## DNL VALVES

### DNL VALVES

#### NON-LEAKAGE OR DNL VALVES

##### FEATURES & BENEFITS:

Automatic shutdown at the end of each irrigation cycle ensuring full retention of water in distribution lines reducing pressure surges and rapid availability of water at the dripper laterals

Ultrasonically welded body to prevent leakage.

Colour coded to ease identification.

Cover for use with subsurface dripperline systems.



DNL NON-LEAKAGE VALVES		0155	CODE	DESCRIPTION	
32000-003550	Z56076	2m Red		●	
32000-003560	Z5607A	4m Black		●	
32000-003570	Z5607	6m Brown		●	
32000-003595		8m Blue		●	

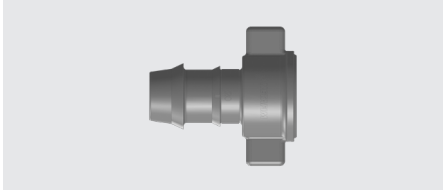
### TECHNICAL DATA

DNL					
FLOW RATE RECOMMENDED RANGE (L/H)	MAX. WORKING PRESSURE (BAR)	MIN. OPERATING PRESSURE (BAR)	SHUT-OFF PRESSURE (BAR)	INLET/OUTLET	COLOUR
0-1000	4.0	0.8	0.2	1/2" MTH	Red
0-1000	4.0	1.2	0.4	1/2" MTH	Black
0-1000	4.0	1.6	0.6	1/2" MTH	Brown
0-1000	4.0	2.0	0.8	1/2" MTH	Blue

# DRIP IRRIGATION

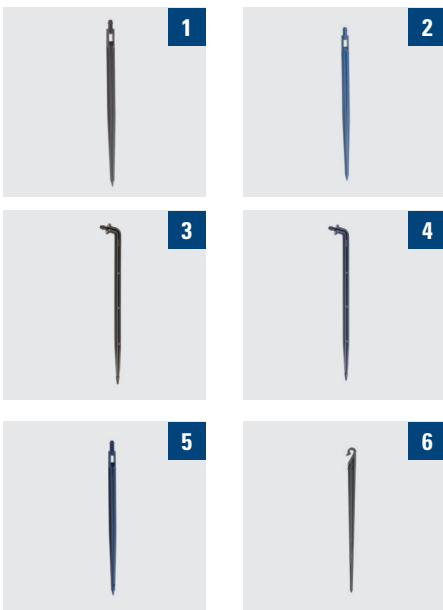
## DRIP IRRIGATION ACCESSORIES

### DNL STARTS 0155



CODE		DESCRIPTION	
32500-013380		16mm x 1/2" Female threaded DNL Barb Adaptor	●
32500-010275	Z5607B	20mm x 1/2" Female threaded DNL Barbed Adaptor	●

### DRIPPER SET STAKES 0155



	CODE		DESCRIPTION	
1	02085-450678	Z5637B	Prevo Straight Stake Black	●
2	02085-450679	Z5637A	Prevo Straight Stake Blue	●
3	02085-450676	Z5636A	Prevo S Stake Black	●
4	02085-450701		Prevo S Stake Blue	●
5	02085-450652		Prevo Pen Blue	●
6	02085-450621	Z5632	Clamp Stake	●
	02085-450664	Z5630	Aqua (Capillary Stake)	●
	32000-001500	Z5640	Clip Stake for 5mm & 7mm Microtubes	●

### ARROW STAKES 0155



CODE		DESCRIPTION	
22000-000900	D457151	2.3. lph Arrow Angle Stake Short Black	●
22000-001000	Z5240	2.3. lph Arrow Straight Stake Black	●
22000-001300	Z5241	2.3 lph Arrow Angle Stake Black	●

# DRIP IRRIGATION

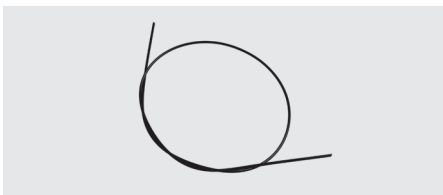
## DRIP IRRIGATION ACCESSORIES

### DRIPPER LEADS 0501



CODE		DESCRIPTION	
02080-451480	Z5610	5mm 80cm Hard	●
02080-451538	Z5620	5mm Arrow 80cm Soft	●
02080-451570	Z5617	PCJ 5.5mm x 3.5mm 60cm	●
02080-451574	Z5616	PCJ 5.5mm x 3.5mm 80cm	●

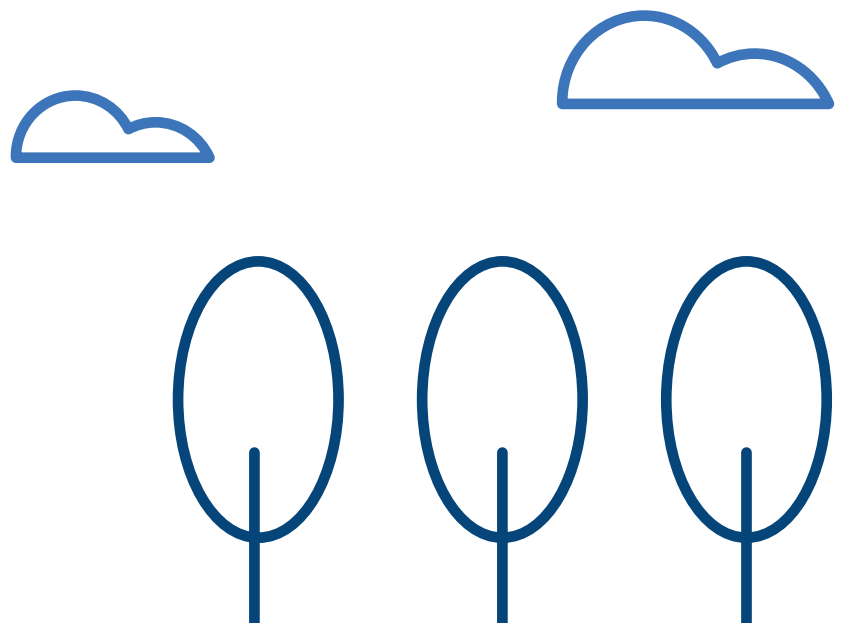
### CAPILLARY LEADS 0155



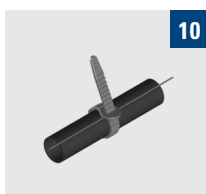
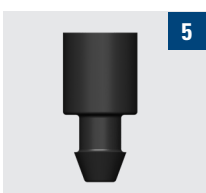
CODE		DESCRIPTION	
02082-451815	Z5622	2.0 lph 85cm	●
02082-451830	Z5621	3.0 lph 85cm	●

### FITTINGS 0155

CODE		DESCRIPTION	
32000-001100	Z5604	5mm Plug	●
32000-001000		3mm - 7mm Plug	●
76200-000900	Z5605	5mm Nipple	●
32500-001300	Z5601	5mm Tee x Barbed x Barbed Tee	●
32500-001500	Z5600	5mm Barbed x Barbed x Barbed	●
32500-001700	Z5602	5mm Tee x Tee x Tee	●



**ACCESSORIES** **0155**



	CODE		DESCRIPTION	
1	32000-002520		5mm Elbow Adaptor	●
2	32000-002530	D450594	Flat Manifold 2 outlets	●
3	32000-002560	Z5235F	Flat Manifold 4 outlets	●
4	32000-002300	Z4899	Upright Manifold 8 way x 1/2" Male for Pot Drippers	●
5	32000-001950		Microtube Adaptor - Dripper Nipple to Tube	●
	32000-003500	Z4395	16mm/17mm Anti Spill Clip	●
6	32000-005730		Plug for PC and PCJ Dripper	●
7	32000-001500	Z5640	Clip Stake for 5mm & 7mm Microtubes	●
	32000-001400	Z5245	Cap for nipple outlet dripper	●
8	32000-002600	Z4960	Drip Irrigation Pressure Indicator	●
9	32000-006500	Z4979	Clip Stake for 16mm Dripperline - Brown	●
10	32000-011450		Zip-tie for 12, 16, 17, 20 & 23mm - Grey	●



# DRIP IRRIGATION

## DRIP IRRIGATION ACCESSORIES

### DRIPLINE VACUUM BREAKER 0155



CODE		DESCRIPTION	
32000-008400	Z4957	1/2" Male Air/Vacuum Breaker	●

### FLUSH VALVES 0155



CODE		DESCRIPTION	
32000-007900		Automatic Line Flush Valve – 540 16mm Fast Ring Connection – Brown	●
32000-007580		Automatic Line Flush Valve – 540 1/2" Male Threaded	●
32000-007850		Automatic Line Flush Valve – 600 1/2" Male Threaded – Brown	●

### TOOLS 0155



IMAGE	CODE		DESCRIPTION	
	02339-450602	Z5609A	Punch for 2.5mm Capillair	●
1	45000-001530		Mini Punch 3mm	●
2	45000-001630		Multi diameter punch	●
3	45000-002260		Connector insertor	●
4	45000-001370		Multi-functional punch/cutter/insertor	●



**PCJ TUBE SETS** **0160**

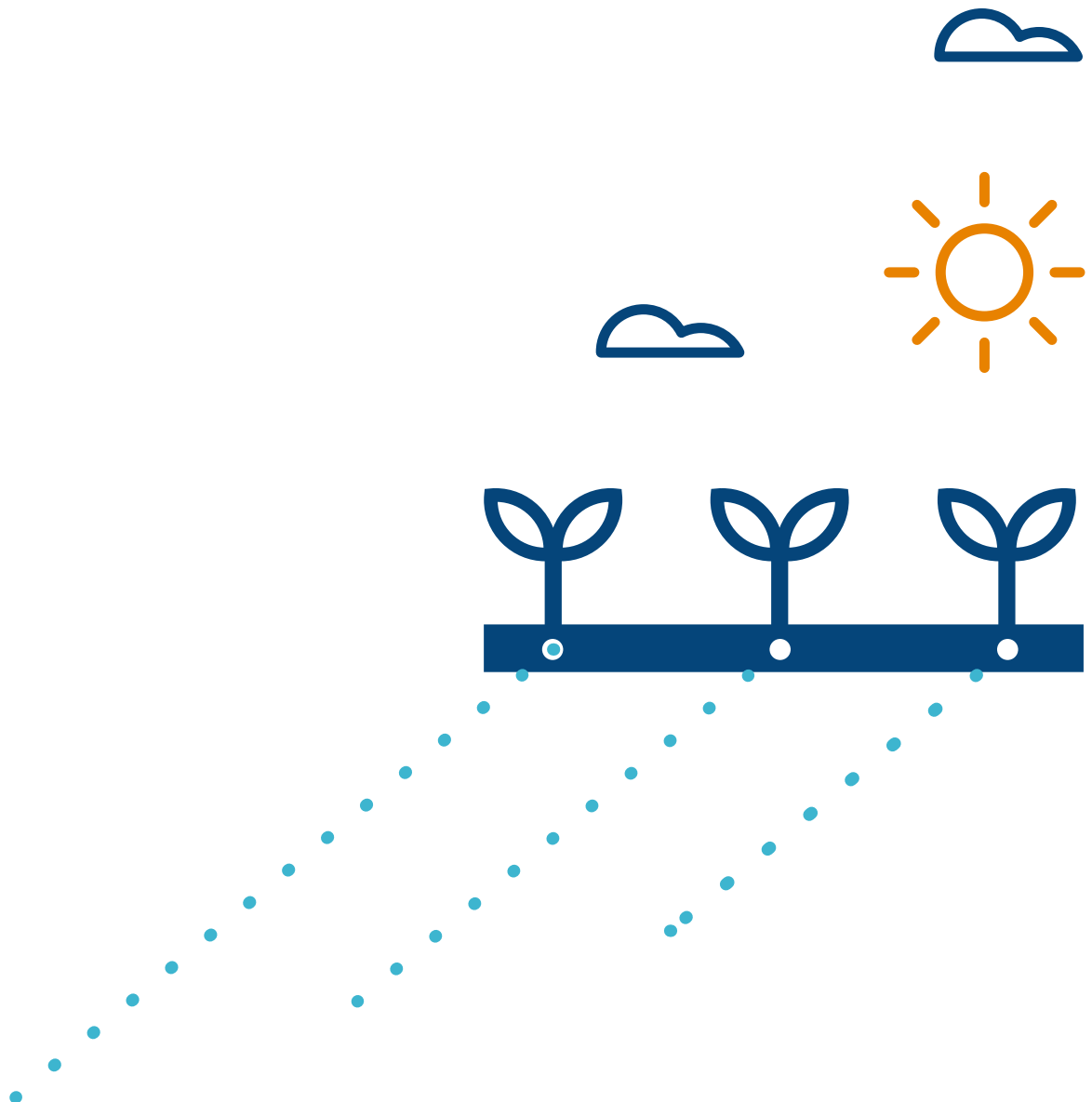


CODE		DESCRIPTION	
<b>02088-451971</b>		PCJ Tube Set 60cm Prevo 'S' Black	●
<b>02088-451981</b>		PCJ Tube Set 80cm Prevo 'S' Black	●

**OTHER PCJ SETS** **0160**



CODE		DESCRIPTION	
<b>02088-453375</b>	Z5285	2.0 lph 80cm Nipple & Cap	●
<b>02088-453370</b>	Z5286	4.0 lph 80cm Nipple & Cap	●



# DRIP IRRIGATION

## PRE-ASSEMBLED SETS

### DRIPPER SETS

#### **FACTORY ASSEMBLED DRIP SETS INCLUDING DRIPPER, LEAD AND STAKE**

##### **FEATURES & BENEFITS:**

The dripper sets are assembled on automatic lines in our factory ensuring correct installation of leads and stakes and tested to eliminate manual errors.

---

Significantly reduces on-site assembly and labour costs.

---

Can form part of a fully factory assembled pipe and dripper sets system further reducing on-site installation costs and ensuring correct insertion of sets into punched pipe.

##### **PRE-ASSEMBLED DRIPPER SETS ARE AVAILABLE IN A NUMBER OF VARIANTS TO BE SELECTED BASED UPON THE SPECIFIC APPLICATION:**

Pot dripper with nipple outlet also known as aPotpecker dripper and 80cm lead

Button dripper with barbed outlet also known as aWoodpecker dripper with nipple and cap

PCJ LCNL with choice of leads and stakes

PCJ HCNL with choice of leads and stakes

Prevo Black Stake – straight stake

Prevo S Black Stake – angled stake

**Bespoke pre-assembled sets are available upon request**



**PCJ HCNL SETS**

**0160**



CODE		DESCRIPTION					
		FLOW	LEAD	LEAD COLOUR	STAKE	STAKE COLOUR	
<b>02089-461069</b>		0.5 lph	70cm	White	Prevo S	Blue	●
<b>02089-462065</b>		0.5 lph	70cm	Black	Prevo S	Black	●
<b>02089-462008</b>	Z5759	1.2 lph	50cm	Black	Prevo S	Black	●
<b>02089-462000</b>		1.2 lph	60cm	Black	Prevo	Black	●
<b>02089-462073</b>	Z5752	2.0 lph	50cm	Black	Prevo	Black	●
<b>02089-461008</b>		1.2 lph	50cm	White	Prevo S	Black	●
<b>02089-462027</b>	Z5760	2.0 lph	50cm	Black	Prevo S	Black	●
<b>02089-462016</b>		2.0 lph	60cm	Black	Prevo S	Black	●
<b>02089-462018</b>		2.0 lph	80cm	Black	Prevo	Black	●
<b>02089-462020</b>	Z5764	2.0 lph	80cm	Black	Prevo S	Black	●
<b>02089-462042</b>	Z5761	3.0 lph	50cm	Black	Prevo S	Black	●
<b>02089-462066</b>		3.0 lph	50cm	Black	Prevo	Black	●
<b>02089-462034</b>		3.0 lph	60cm	Black	Prevo	Black	●
<b>02089-462052</b>	Z5762	4.0 lph	50cm	Black	Prevo S	Black	●
<b>02089-452050</b>	Z5754	4.0 lph	50cm	Black	Prevo	Black	●
<b>02089-462058</b>		4.0 lph	80cm	Black	Prevo	Black	●
<b>02089-462072</b>		4.0 lph	100cm	Black	Prevo	Black	●

**PCJ LCNL SETS**

**0160**



CODE		DESCRIPTION					
		FLOW	LEAD	LEAD COLOUR	STAKE	STAKE COLOUR	
<b>02088-453420</b>	Z5281B	2.0 lph	50cm	Prevo	Black	Blue	●
<b>02088-453437</b>	Z5293A	2.0 lph	50cm	Prevo S	Black	Black	●
<b>02088-453426</b>		2.0 lph	60cm	Prevo S	Black	Black	●
<b>02088-453323</b>	Z5381	2.0 lph	80cm	Prevo	Black	Black	●
<b>02088-453320</b>	Z5383	2.0 lph	80cm	Prevo S	Black	Black	●
<b>02088-453418</b>		3.0 lph	50cm	Prevo	Black	Black	●
<b>02088-453327</b>	Z5281A	3.0 lph	80cm	Prevo	Black	Black	●
<b>02088-453331</b>		3.0 lph	80cm	Prevo S	Black	Black	●
<b>02088-453432</b>		4.0 lph	60cm	Prevo S	Black		●
<b>02088-453335</b>	Z5282	4.0 lph	80cm	Prevo	Black	Black	●
<b>02088-453337</b>	Z5384	4.0 lph	80cm	Prevo S	Black		●

# DRIP IRRIGATION

## PRE-ASSEMBLED SETS

### PRE-ASSEMBLED SETS OTHERS

#### MULTI OUTLET SETS 0165



CODE		DESCRIPTION			
		LEAD	STAKE	NUMBER OF OUTLETS	
02102-456929		80cm	Straight	2	●
02102-456175	Z5230	80cm	Straight	4	●
02102-456178	Z5229	100cm	Straight	4	●
02102-456910	Z5232	80cm	Mini S	4	●
02102-456930	Z5231	80cm	Straight	4	●
02102-456950	D456950	100cm	Straight	4	●
02102-456955		1200cm	Straight	4	●

#### POTPECKER SETS 0165



CODE		DESCRIPTION			
		FLOW	LEAD	ALSO INCLUDED	
02095-457254		2.0 lph	80cm	None	●
02095-453457	Z5725	2.0 lph	80cm	Nipple only	●
02095-457244	Z5730	4.0 lph	80cm	Nipple only	●
02095-457251	Z5729	8.0 lph	80cm	Cap only	●

#### WOODPECKER SET 0165



CODE		DESCRIPTION				
		FLOW	LEAD	STAKE	STAKE COLOUR	
02095-457195	Z5700	2.0 lph	80cm	Prevo	Black	●

#### SPRAY STAKE SETS 0165

CODE		DESCRIPTION			
		FLOW	LEAD	STAKE	
02098-454120		12 lph	60cm & connector	PC Spray – Yellow	●
02098-454131		12 lph	80cm	PC Spray – Yellow	●
02098-454135		17.5 lph	80cm	PC Spray – Yellow	●
02098-454128	D454128	17.5 lph	100cm & connector	PC Spray - Green	●

# DRIP IRRIGATION

## PRE-ASSEMBLED SETS

### FULLY ASSEMBLED DRIP SYSTEMS

DRIPPER	LEAD LENGTH (CM)	LEAD DIMENSIONS (MM)	STAKE OPTIONS	TUBE OPTIONS (MM)	DRIPPER SPACING(CM)	MIXED SPACING OPTION	AVAILABLE IN WHITE
<b>PCJ</b>	20-100**	5 x 3.2	Prevo* / Prevo S	16-20-25-32	3-300	Yes	Yes
<b>Bubbler</b>	20-100**	5 x 3.2	Prevo*/Prevo S/ Spraystake	16-20-25-32	3-300	Yes	Yes
<b>Woodpecker</b>	20-100	5 x 3.2	Prevo* / Prevo S	16-20-25-32	3-300	Yes	Yes
<b>Arrow</b>	20-100**	5 x 3.2	Arrow/Arrow S/ Arrow Mini/ Arrow Low Flow	16-20-25-32	3-300	Yes	Yes
<b>Spraystake</b>	40-100**	5 x 3.2	Yellow / Green / Black	16-20-25-32	5-200	No	Yes
<b>Capillair A</b>	40-100**	3.2 x 0.7	Cap Spike / Cap S	16-20-25-32	5-200	Yes	No
<b>Capillair B</b>	40-100**	3.2 x 0.8	Cap Spike / Cap S	16-20-25-32	5-200	Yes	No
<b>Capillair C</b>	40-100**	3.2 x 0.9	Cap Spike / Cap S	16-20-25-32	5-200	Yes	No
<b>Capillair D</b>	40-100**	3.2 x 1.0	Cap Spike / Cap S	16-20-25-32	5-200	Yes	No
<b>Capinet</b>	60**	3.4 x 2.4	Capinet + Capi S	16-20-25-32	5-200 Yes	Yes	No

\* Prevo can be assembled with alternate blue and black stakes on request

\*\* Longer lead lengths are available on request. Please consult Netafim Customer Services.

### SINGLE AND MULTI-OUTLET PRE-INSTALLED DRIPPERS (MULTI-OUTLETS ALWAYS SUPPLIED LOOSE)

DRIPPER	LEAD LENGTH (CM)	LEAD DIMENSIONS (MM)	STAKE OPTIONS	TUBE OPTIONS (MM)	DRIPPER SPACING(CM)	MIXED SPACING OPTION	AVAILABLE IN WHITE
<b>CNL</b>				16-20-25-32	5-300	Yes	Yes
<b>PCJ</b>				16-20-25-32	5-300	Yes	Yes
<b>Bubbler</b>				16-20-25-32	5-300	Yes	Yes
<b>Woodpecker</b>				16-20-25-32	5-300	Yes	Yes

### LOOSE DRIPPER SETS

DRIPPER	LEAD LENGTH (CM)	LEAD DIMENSIONS (MM)	STAKE OPTIONS
<b>PCJ</b>	30-100	5 x 3.2	Prevo* / Prevo S
<b>Bubbler</b>	30-100	5 x 3.2	Prevo* / Prevo S
<b>Woodpecker</b>	30-100	5 x 3.2	Prevo* / Prevo S
<b>Arrow *</b>	30-100	5 x 3.2	Arrow/Arrow S/ Arrow Mini/Arrow Low Flow

**Irrigation Design and Sales Limited**

**10 Bay Close**

**Three Legged Cross**

**Wimborne**

**Dorset**

**BH21 6SW**

**Tel/Fax : 01202 825174**

**Mobile : 07850 327994 (Wim van Varik)**

