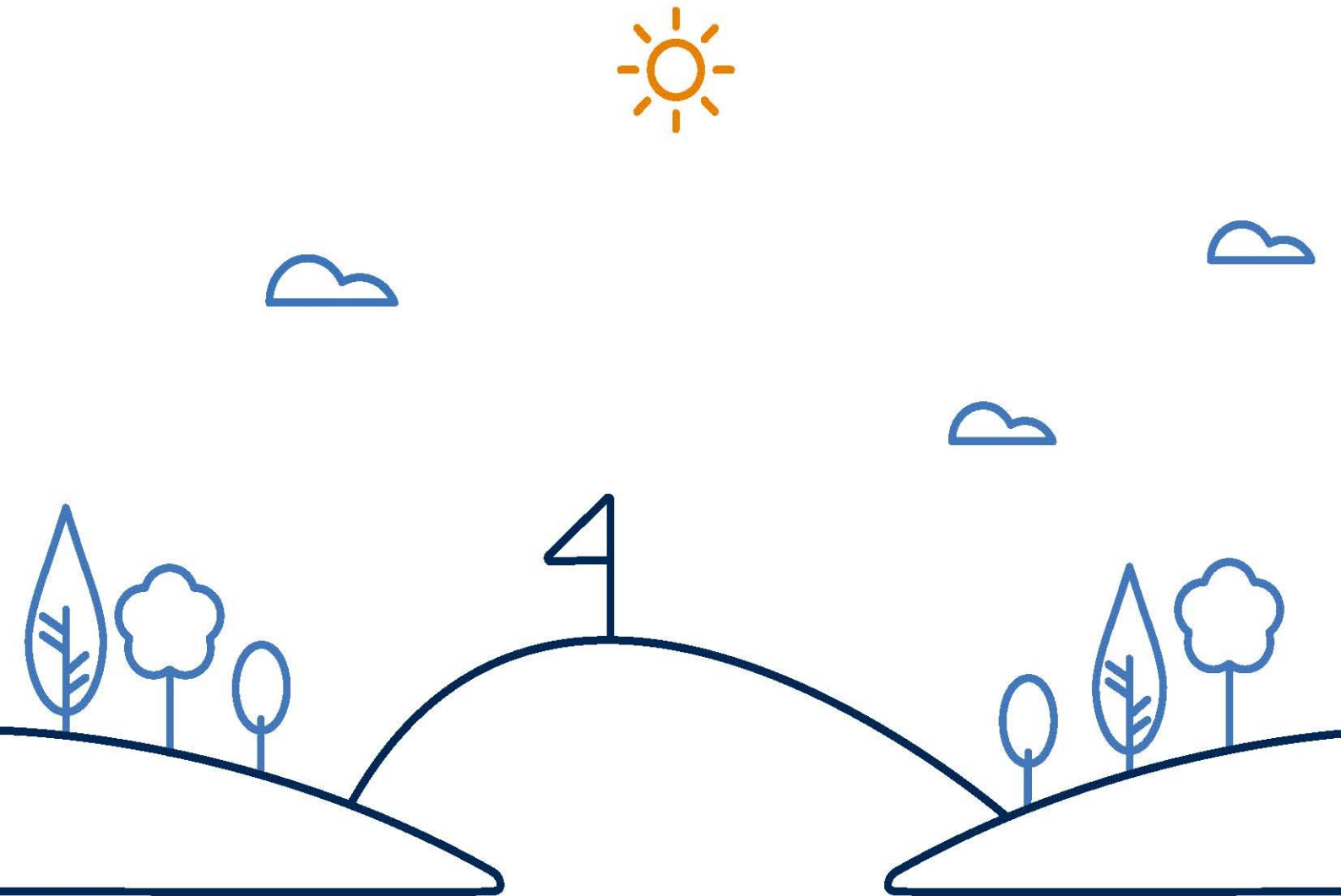


2019/20

Sports and Landscape Catalogue



SPORTS AND LANDSCAPE

INTRODUCTION

NETAFIM UK ARE A MAIN DISTRIBUTOR OF HUNTER INDUSTRIES PRODUCTS. WE HAVE REPRESENTED HUNTER IN THE UK FOR OVER TEN YEARS AND HAVE BUILT A STRONG REPUTATION WITH THE SPORTS AND LANDSCAPE IRRIGATION MARKET FOR OUR COMPREHENSIVE STOCK LEVELS, PRODUCT APPLICATION KNOWLEDGE AND TECHNICAL SUPPORT TO THE HUNTER BRAND.

As one of the major manufacturers of sports and landscape sprays, rotors, controllers and valves, Hunter produces products for all amenity irrigation applications including residential landscape, commercial landscape, sports turf and golf.

CONTENTS

INTRODUCTION	2	DUAL	40
MPR	3	ACC99D	42
PRO ADJUSTABLE NOZZLES	7	ACC275D	44
PRO SPRAY	8	ICD-HP	46
HUNTER SJ & FLEXSG	9	ROAM	47
PGJ	10	HC & PRO-HC	48
PGP	11	PRO-C Hydrowise	49
I-20 ROTORS	12	HCC	50
I-25 ROTORS	14	BTT	51
I-40 ROTORS	16	NODE	52
I-90 ROTORS	20	WVC	53
G35B & G835E	22	X-CORE HYBRID	54
G70B & G75B	23	PGV	56
G80B & G85B	24	ICV	58
G884E & G885E	26	QCV	60
G990E & G995E	28	ACCU SYNC	60
DURA SJ & GOLF ADAPTORS	30	RAIN CLIK	61
ROTOR TOOLS, NOZZLES	31	MINI CLIK	62
X-CORE	32	SOIL CLIK	63
PRO-C & PRCC	34	SOLAR SYNC	66
ICC2	36	FLOW CLIK	67
EZDS	38	LANDSCAPE DRIPPERLINES	68
I CORE	39	VALVE BOXES	71

SPORTS AND LANDSCAPE ROTORS

MP ROTATORS

APPLICATIONS

- Lawns, shrub beds, nurseries, garden centres

FEATURES AND BENEFITS

True matched precipitation allowing mixing of arcs on the same control station/zone

Easy and adjustable arc and radius offering precise and matched settings

Radius can be reduced by up to approximately 25% on all models

Double pop up ensuring debris is ejected automatically before full extension of the riser

Removable filter screen allowing simple servicing

Higher uniformity of distribution than conventional spray nozzles

Wind resistant multi-stream technology

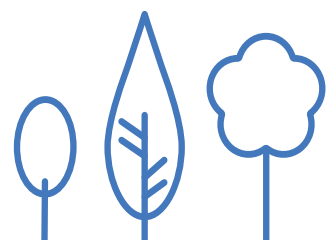
Low precipitation rate typically 10mm/hr

Colour coded nozzles for easy identification



The Hunter MP Rotator is available in the following configurations

MODEL	RADIUS RANGE	90° - 210°	210° - 270°	360°
MP800SR	1.8m to 3.5m	Yes		Yes
MP1000	2.5m to 4.5m	Yes	Yes	Yes
MP2000	4.0m to 6.4m	Yes	Yes	Yes
MP3000	6.7m to 9.1m	Yes	Yes	Yes
MP3500	9.4m to 10.7m		Yes	
MP Corner Strip	1.5m to 4.6m			
MP Side Strip	1.5m to 9.1m			
MP Corner	2.5m to 4.5m			



SPORTS AND LANDSCAPE ROTORS



NETAFIM CODE		HUNTER CODE	DESCRIPTION
76700-902700	Z8995D	MP800SR90	90° - 210°
76700-902705	Z8995D	MP800SR360	360°



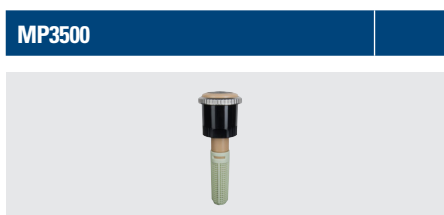
NETAFIM CODE		HUNTER CODE	DESCRIPTION
02204-111226	Z8995A	MP100090	90° - 210°
02204-111229	Z8995C	MP1000210	210° - 270°
02204-111228	Z8995B	MP1000360	360°



NETAFIM CODE		HUNTER CODE	DESCRIPTION
02204-111230	Z8087	MP200090	90° - 210°
02204-111235	Z8088	MP2000210	210° - 270°
02204-111240	Z8089	MP2000360	360°



NETAFIM CODE		HUNTER CODE	DESCRIPTION
02204-111231	Z8994	MP300090	90° - 210°
02204-111236	Z8993	MP3000210	210° - 270°
02204-111241	Z8995	MP3000360	360°



NETAFIM CODE		HUNTER CODE	DESCRIPTION
02204-111234	Z8996	MP350090	90° - 210°



NETAFIM CODE		HUNTER CODE	DESCRIPTION
76700-902710	Z8810	MPCORNER	Corner
76700-902730	Z8811	MPSS530	Side strip
02204-111250	Z8812	MPLCS515	Left corner
76700-902720	Z8813	MPRCS515	Right corner
76700-902900	Z8083	MPTOOL	MP adjustment tool

TECHNICAL DATA

MP800SR						
MODEL	ARC	COLOUR	RADIUS	FLOW	PRECIPITATION RATE	
			m	l.p.m.	Square	Triangular
		Grey and			mm/hr	mm/hr
MP800SR-90	90° - 210°	Orange	3.1	0.87 – 1.85	21	24
MP800SR-360	360°	Lime Green	3.1	2.95	21	24

*Performance at the recommended operating-pressure: 2.8 Bar

MP1000						
MODEL	ARC	COLOUR	RADIUS	FLOW	PRECIPITATION RATE	
			m	l.p.m.	Square	Triangular
					mm/hr	mm/hr
MP1000-90	90° - 210°	Maroon	4.1	0.80 - 1.86	11	13
MP1000-210	210° - 270°	Lt Blue	4.1	1.86 - 2.39	11	13
MP1000-360	360°	Olive	4.1	3.18	11	13

MP2000						
MODEL	ARC	COLOUR	RADIUS	FLOW	PRECIPITATION RATE	
			m	l.p.m.	Square	Triangular
					mm/hr	mm/hr
MP2000-90	90° - 210°	Black	5.8	1.63 – 3.26	10	12
MP2000-210	210° - 270°	Green	5.8	3.26 – 4.17	10	12
MP2000-360	360°	Red	5.8	5.61	10	12

MP3000						
MODEL	ARC	COLOUR	RADIUS	FLOW	PRECIPITATION RATE	
			m	l.p.m.	Square	Triangular
					mm/hr	mm/hr
MP3000-90	90° - 210°	Blue	9.1	3.26 – 8.03	10	12
MP3000-210	210° - 270°	Yellow	9.1	8.03 – 10.35	10	12
MP3000-360	360°	Grey	9.1	13.80	10	12

TECHNICAL DATA

MP3500						
MODEL	ARC	COLOUR	RADIUS	FLOW	PRECIPITATION RATE	
			m	l.p.m.	Square	Triangular
					mm/hr	mm/hr
MP3500-90	90° - 210°	Lt Brown	10.7	4.84 – 12.45	10	12

MP STRIPS				
MODEL	ARC	COLOUR	RADIUS	FLOW
			m	l.p.m.
MP-LCS-515	Left corner	Ivory	1.5 x 4.6	0.84
MP-RCS-515	Right corner	Copper	1.5 x 4.6	0.84
MP-SS-530	Side strip	Brown	1.5 x 9.1	1.66

MP CORNER				
MODEL	ARC	COLOUR	RADIUS	FLOW
			m	l.p.m.
MP Corner	45° - 105°	Turquoise	4.1	0.70 - 1.70

*Optimum pressure for the MP Rotator® is 2.8 Bar.
This best achieved using the Hunter Pro-Spray bodies
with 2.8 Bar pressure regulation.

SPORTS AND LANDSCAPE

PRO ADJUSTABLE NOZZLES

APPLICATIONS

- Lawns, shrub beds, nurseries, garden centres

FEATURES AND BENEFITS

Matched precipitation rate on each nozzle

Adjustable from 0° to 360°

Radius range 1.2 m to 5.2m

NETAFIM CODE		HUNTER CODE	DESCRIPTION
76700-900100	Z9072A	8A	Adjustable spray nozzle 2.4m radius
76700-900110	Z9072B	10A	Adjustable spray nozzle 3.0m radius
76700-900120	Z9072C	12A	Adjustable spray nozzle 3.7m radius
76700-900130	Z9072D	15A	Adjustable spray nozzle 4.6m radius
76700-900140	Z9072E	17A	Adjustable spray nozzle 5.2m radius



TECHNICAL DATA

MP800SR

MODEL	COLOUR	TRAJECTORY	RADIUS	FLOW	PRECIPITATION RATE	
					Square	Triangular
			m	l.p.m.	mm/hr	mm/hr
4A	Lt. Green	0°	1.2	0.48 – 2.98	129 - 168	146 - 194
6A	Lt. Blue	0°	1.8	0.65 - 4.62	87- 102	97 - 118
8A	Brown	0°	2.4	0.83 – 6.61	67	77
10A	Red	15°	3.0	0.94 – 7.55	49	56
12A	Green	28°	3.7	1.23 – 9.84	44	51
15A	Black	28°	4.6	1.79 – 14.28	40	46

SPORTS AND LANDSCAPE

SPRAY BODIES

APPLICATIONS

- Residential lawns and shrub beds
- Nurseries and garden centres
- Golf bunker edges

FEATURES AND BENEFITS

Heavy duty spring ensuring full riser retraction

Industry's strongest spray body

Innovative seal design ensuring maintenance of waterproof seal even when the riser is rotated

Optional check valve for pop-up spray bodies

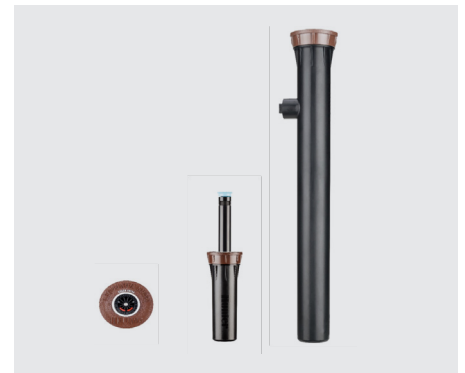
THE HUNTER PRO-SPRAY BODY IS AVAILABLE IN THE FOLLOWING CONFIGURATIONS

- 00** Shrub (check valve option not available on the Pro-Spray Shrub Body)
- 02** 2"/5cm pop-up
- 04** 4"/10cm pop-up
- 06** 6"/15cm pop-up
- 12** 12"/30cm pop-up – side inlet version is standard on non-pressure regulated 12"/30cm pop-up
- 2.1** Bar pressure regulated body with check valve – no side inlet with check valve models
- 2.8** Bar pressure regulated body with check valve – recommended for use with MP ROTORS – no side inlet with check valve models

NETAFIM CODE	HUNTER CODE	DESCRIPTION	
76700-901730	Z9056G	PROS00	Pro-Spray Shrub Adaptor
76700-901600	Z9056A	PROS02	2" Pro-Spray Body
76700-901610	Z9056	PROS04	4" Pro-Spray Body
76700-901680	Z9056F	PROS06	6" Pro-Spray Body
76700-901590	Z9056B	PROS12	12" Pro-Spray Body

NETAFIM CODE	HUNTER CODE	DESCRIPTION	
76700-901660	Z9056C	PROS04PRS30CV	4" Pro-Spray Body 2.1 Bar Pressure reg & check valve
76700-901700	Z9056D	PROS12PRS30CV	12" Pro-Spray Body 2.1 Bar Pressure reg & check valve

NETAFIM CODE	HUNTER CODE	DESCRIPTION	
76700-901670	Z9056H	PROS04 PRS40CV	4" Pro-Spray Body 2.4Bar Pressure reg & check valve
76700-901690	Z9056J	PROS06 PRS40CV	6" Pro-Spray Body 2.4Bar Pressure reg & check valve
76700-901710	Z9056I	PROS12 PRS40CV	12" Pro-Spray Body 2.4Bar Pressure reg & check valve



TECHNICAL DATA

OPERATING PRESSURE RANGE	INLET	DRAIN VALVE	WARRANTY
1.0 Bar to 7.0 Bar	½"	Up to 4 metres of elevation	5 years

SPORTS AND LANDSCAPE

SWING JOINTS

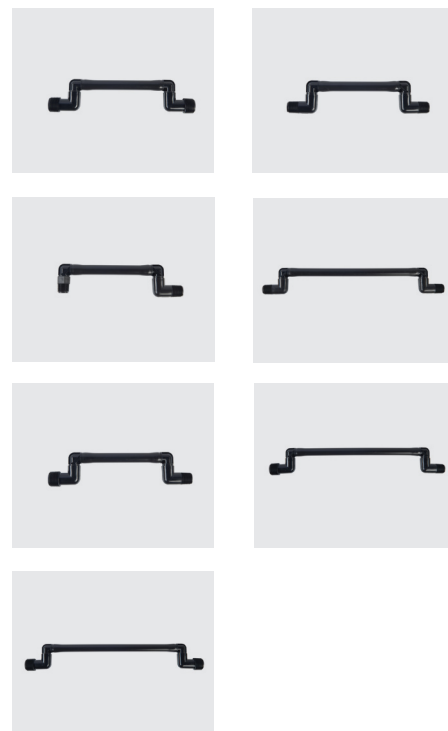
HUNTER SJ SWING JOINTS AND FLEXSG TUBING

APPLICATIONS

- For use with Pro-Spray Bodies

NETAFIM CODE		HUNTER CODE	DESCRIPTION
76700-011910	Z9034	SJ506	½" x 6" swing joint
76700-011900	Z9035	SJ512	½" x 12" swing joint
76700-011940	Z9036	SJ706	¾" x 6" swing joint
76700-011930	Z9037	SJ712	¾" x 12" swing joint
76700-011920	Z9077	SJ7512	¾" x ½" x 12" swing joint

*Pressure rated to 10 Bar



NETAFIM CODE		HUNTER CODE	DESCRIPTION
76700-902910	Z8184	FLEXsg	FLEXsg tubing 30m coil
76700-902920	Z8180	HSBE050	Spiral barbed elbow x ½" M
76700-902930	Z8181	HSBE075	Spiral barbed elbow x ¾" M

*Pressure rated to 5.5 Bar



SPORTS AND LANDSCAPE ROTORS

HUNTER PGJ ROTOR

APPLICATIONS

- Lawns and shrubs

FEATURES AND BENEFITS

4.3 m to 11.6m radius

Full and part circle arc, 40° to 360°, simplifying stocking and installation

Through the top arc adjustment making adjustment simple

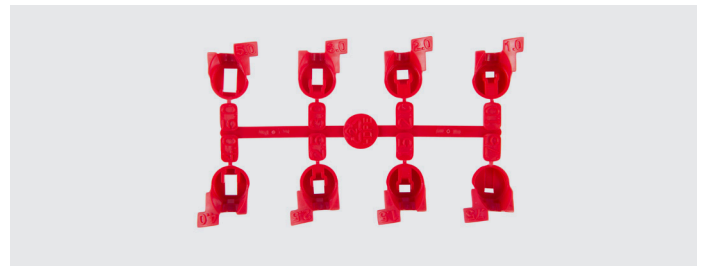
QuickCheck™ arc mechanism simplifies arc checking and adjustment

Factory installed rubber cover protecting the rotor from damage

THE HUNTER PGJ ROTOR IS AVAILABLE IN THE FOLLOWING CONFIGURATIONS:

- 04** 4"/10cm pop-up
- 04-V** 4"/10cm pop-up with check valve

NETAFIM CODE		HUNTER CODE	DESCRIPTION
76700-901320	Z9052	PGJ04	PGJ Full/Part rotor
76700-902000	Z9052A	PGJ04V	PGJ c/w check rotor



TECHNICAL DATA

NOZZLE	COLOUR	RADIUS	FLOW
		m	l.p.m.
0.75	Red	4.3 - 5.5	2.2 - 3.4
1.0	Red	5.2 - 6.1	3.0 - 4.2
1.5	Red	6.1 - 7.0	4.5 - 6.7
2.0	Red	7.0 - 7.9	5.6 - 9.3
2.5	Red	7.9 - 8.8	7.6 - 10.9
3.0	Red	8.8 - 9.8	8.5 - 13.7
4.0	Red	9.8 - 10.7	13.3 - 16.7
5.0	Red	10.7 - 11.6	17.0 - 20.5

*Supplied with factory installed No. 2 nozzles

Inlet: 1/2"

Optional drain check valve up to 2m elevation

SPORTS AND LANDSCAPE ROTORS

HUNTER PGP® ULTRA ROTOR

APPLICATIONS

- Lawns, planted areas

FEATURES AND BENEFITS

4.9 m to 14.0m radius

Standard, low angle, short radius and high flow nozzles

Full and part circle arc, 50° to 360°, simplifying stocking and installation

Through the top arc adjustment making adjustment simple

QuickCheck™ arc mechanism simplifies arc checking and adjustment

Factory installed rubber cover protecting the rotor from damage

Non-strippable drive reducing potential mechanism damage

Automatic arc return ensuring correct arc setting even when the riser is turned by hand beyond the set arc limits

THE HUNTER PGP ROTOR IS AVAILABLE IN THE FOLLOWING CONFIGURATIONS:

- 00** Shrub
- 04** 4"/10cm pop-up
- 12** 12"/30cm pop-up

Plastic riser

Standard drain check valve up to 3m elevation

NETAFIM CODE	HUNTER CODE	DESCRIPTION
76700-901390	Z9055	PGP00
76700-901380	Z9053B	PGP04
76700-902010	Z9053C	PGP04CV
76700-902020	Z9053D	PGP12CV



TECHNICAL DATA

NOZZLE	RADIUS	FLOW
	m	l.p.m.
1.5	8.8 – 9.4	4.5 – 7.2
2.0	10.1 – 10.4	5.4 – 8.8
2.5	10.1 – 10.7	6.6 – 11.1
3.0	10.7 – 11.9	8.4 – 14.0
4.0	11.3 – 12.5	11.3 – 18.3
5.0	11.3 – 12.8	14.0 – 23.4
6.0	11.6 – 13.4	16.8 – 27.9
8.0	11.3 – 14.0	22.5 – 36.9

NOZZLE	RADIUS	FLOW
	m	l.p.m.
2.0LA	7.3 – 9.1	5.6 – 9.1
2.5LA	7.9 – 10.7	7.3 – 12.0
3.5LA	8.5 – 11.3	9.7 – 14.8
4.5LA	8.2 – 11.3	11.8 – 18.6

Operating pressure range: 1.7 Bar to 4.5 Bar

Inlet ¾"

5 years warranty

SPORTS AND LANDSCAPE ROTORS

I-20 ROTORS

APPLICATIONS

- Lawns, planted areas, small golf tees

FEATURES AND BENEFITS

4.9 m to 14.0m radius

Standard, low angle, short radius and high flow nozzles

Full and part circle arc, 50° to 360°, simplifying stocking and installation

Through the top arc adjustment making adjustment simple

QuickCheck™ arc mechanism simplifies arc checking and adjustment

Factory installed rubber cover protecting the rotor from damage

Non-strippable drive reducing potential mechanism damage

Automatic arc return ensuring correct arc setting even when the riser is turned by hand beyond the set arc limits

FloStop® allows sprinkler to be turned off at the head to allow nozzle changes even if the station is running

THE HUNTER I-20 ROTOR IS AVAILABLE IN THE FOLLOWING CONFIGURATIONS:

04 4"/10cm pop-up

06 6"/15cm pop-up

12 12"/30cm pop-up

Plastic riser or stainless steel riser

Standard drain check valve up to 3m elevation



NETAFIM CODE		HUNTER CODE	DESCRIPTION
76700-901940	Z9040	I2004	I-20 Full/Part circle rotor - 4" plastic riser
76700-902130	Z9039	I2004SS	I-20 Full/Part circle rotor - 4" stainless steel riser
76700-902140	Z9038	I2006SS	I-20 Full/Part circle rotor - 6" stainless steel riser
76700-901930	Z9038C	I2012	I-20 Full/Part circle rotor - 12" plastic riser

TECHNICAL DATA

STANDARD BLUE NOZZLE

NOZZLE	RADIUS	FLOW
	m	l.p.m.
1.5	8.8 – 9.4	4.5 – 7.2
2.0	10.1 – 10.4	5.4 – 8.8
2.5	10.1 – 10.7	6.6 – 11.1
3.0	10.7 – 11.9	8.4 – 14.0
4.0	11.3 – 12.5	11.3 – 18.3
5.0	11.3 – 12.8	14.0 – 23.4
6.0	11.6 – 13.4	16.8 – 27.9
8.0	11.3 – 14.0	22.5 – 36.9

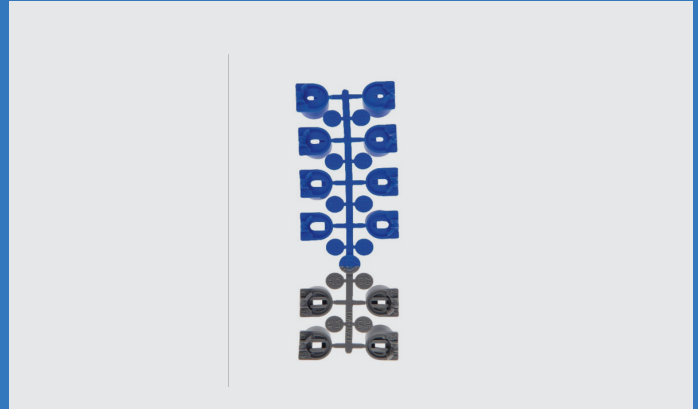
LOW ANGLE GREY NOZZLE

NOZZLE	RADIUS	FLOW
	m	l.p.m.
2.0LA	7.3 – 9.1	5.6 – 9.1
2.5LA	7.9 – 10.7	7.3 – 12.0
3.5LA	8.5 – 11.3	9.7 – 14.8
4.5LA	8.2 – 11.3	11.8 – 18.6

Operating pressure range: 1.7 Bar to 4.5 Bar

Inlet: ¾"

Warranty: 5 years



SPORTS AND LANDSCAPE ROTORS

I-25 ROTORS

APPLICATIONS

- Lawns, planted areas and golf tees

FEATURES AND BENEFITS

11.9m to 21.6m radius

Full and part circle arc, 50° to 360°, simplifying stocking and installation

Through the top arc adjustment making adjustment simple

QuickCheck™ arc mechanism simplifies arc checking and adjustment

Factory installed rubber cover protecting the rotor from damage

Non-strippable drive reducing potential mechanism damage

Automatic arc return ensuring correct arc setting even when the riser is turned by hand beyond the set arc limits

Colour coded nozzles

THE HUNTER I-25 ROTOR IS AVAILABLE IN THE FOLLOWING CONFIGURATIONS:

04 4"/10cm pop-up

Plastic riser or stainless steel riser

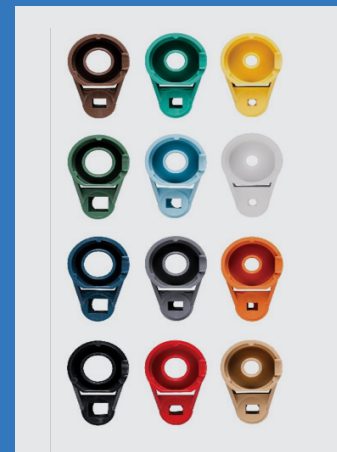
Standard drain check valve up to 3m elevation



NETAFIM CODE	HUNTER CODE	DESCRIPTION
76700-901020	Z9043A I2504B	I-25 Full/Part circle rotor - 4" plastic riser
76700-901030	Z9041A I2504SSB	I-25 Full/Part circle rotor - 4" stainless steel riser

TECHNICAL DATA

STANDARD NOZZLE			
NOZZLE	COLOUR	RADIUS	FLOW
		m	l.p.m.
4	Yellow	11.9 – 13.4	13.6 – 20.7
5	White	12.8 – 14.3	15.9 – 22.6
7	Orange	13.4 – 15.2	24.0 – 31.1
8	Lt. Brown	14.0 – 15.8	27.5 – 39.6
10	Lt. Green	15.2 – 16.8	35.8 – 51.1
13	Lt. Blue	15.8 – 17.1	36.9 – 56.4

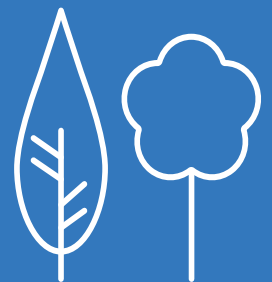


Operating pressure range: 2.5 Bar to 7.0 Bar

Inlet: 1" BSP

Trajectory: 25°

Warranty: 5 years



SPORTS AND LANDSCAPE ROTORS

I-40 ROTORS

APPLICATIONS

- Lawns, sports pitches, golf tees, public park, tennis courts

FEATURES AND BENEFITS

13.1m to 23.2m radius

Full and part circle arc, 50° to 360°, simplifying stocking and installation

Through the top arc adjustment making adjustment simple

QuickCheck™ arc mechanism simplifies arc checking and adjustment

Factory installed rubber cover protecting the rotor from damage

Non-strippable drive reducing potential mechanism damage

Automatic arc return ensuring correct arc setting even when the riser is turned by hand beyond the set arc limits

Colour coded nozzles

THE HUNTER I-40 ROTOR IS AVAILABLE IN THE FOLLOWING CONFIGURATIONS:

04 4"/10cm pop-up

06 6"/15cm pop-up

Plastic riser or stainless steel riser

Opposing nozzle full circle models

Turf cup

Standard drain check valve up to 4.5m elevation



NETAFIM CODE		HUNTER CODE	DESCRIPTION
76700-902150	Z9046A	I4004SSB	I-40 Full/Part circle rotor - 4" stainless steel riser
76700-902180	Z9046B	I4004SSONB	I-40 Full circle opposing nozzles - 4" stainless steel riser
76700-902190	Z9046C	I4006SSONB	I-40 Full circle opposing nozzles - 6" stainless steel riser
76700-902160	Z9045C	I4004SSHBS	I-40 Full/Part circle high speed rotor - 4" stainless steel riser
76700-902170	Z9045D	I4006SSHBS	I-40 Full/Part circle high speed rotor - 6" stainless steel riser
76800-904160	Z9072	TURFCUPKITI40	I-40 Turf Cup

TECHNICAL DATA

STANDARD NOZZLE

NOZZLE	COLOUR	RADIUS	FLOW
		m	l.p.m.
8	Light Brown	13.1 – 14.6	27.2 – 40.2
10	Light Green	14.6 – 16.2	36.6 – 51.4
13	Light Blue	14.9 – 16.5	39.4 – 56.3
15	Grey	16.2 – 18.3	48.8 – 73.8
23	Dark Green	18.6 – 20.4	74.6 – 103.2
25	Dark Blue	19.8 – 21.3	83.0 – 117.8

HIGH SPEED NOZZLE

NOZZLE	COLOUR	RADIUS	FLOW
		m	l.p.m.
8	Light Brown	12.2 – 13.4	27.2 – 40.2
10	Light Green	13.4 – 14.6	36.6 – 51.4
13	Light Blue	13.7 – 14.9	39.4 – 56.3
15	Grey	15.2 – 16.5	48.8 – 73.8
23	Dark Green	16.8 – 18.6	74.6 – 103.2
25	Dark Blue	17.4 – 19.5	83.0 – 117.8



Operating pressure range: 2.5 Bar to 7.0 Bar

Inlet: 1" BSP

Trajectory: 25°

Warranty: 5 years

SPORTS AND LANDSCAPE ROTORS

I-80 ROTORS

APPLICATIONS

- Sports pitches

FEATURES AND BENEFITS

11.3m to 29.6m radius

Full and part circle arc, 60° to 360°, simplifying stocking and installation

Unique ProTech Turf Cup System

- Allows servicing without any need to excavate around the sprinkler
- Quick release turf cup allows easy access to arc adjustment and riser assembly removal
- Quick release turf cup allowing fast and easy replacement

Through the top arc adjustment making adjustment simple

QuickCheck™ arc mechanism simplifies arc checking and adjustment

QuickSet - 360°

Ratcheting stainless steel riser

Contour back nozzle compatible

Colour coded standard and low trajectory nozzle

THE HUNTER I-80 ROTOR IS AVAILABLE IN THE FOLLOWING CONFIGURATIONS:

3¾"/9.5cm pop-up standard rotor

3½"/8.9cm pop-up rotor with turf cup

Stainless steel riser

04 Adjustable 60° to 360° arc

ON –Opposing nozzle full circle model

TC – Factory fitted turf cup

Standard drain check valve up to 1.5m elevation



NETAFIM CODE	HUNTER CODE	DESCRIPTION
76700-000820	I8004SSONB48S	I-80 Full circle rotor, opposing nozzles
76700-000821	I8004SSB48S	I-80 Full/Part circle rotor
76700-000823	I8004SSONTCB48S	I-80 Full circle rotor, opposing nozzles, factory fitted turf cup
76700-000822	I8004SSTCB48S	I-80 Full/Part circle rotor, factory fitted turf cup
TBA	959400SP	I-80 Turf cup kit

TECHNICAL DATA

OPPOSING NOZZLES					
NOZZLE SET	COLOURS			RADIUS	FLOW
	Side	Main	Side		
				m	l.p.m.
15	Tan	White	Grey	14.9 – 16.8	53.8 – 68.9
18	Tan	Orange	Grey	17.1 – 18.6	66.1 – 82.4
20	Tan	Brown	Grey	17.4 – 19.5	69.7 – 85.0
23	Tan	Green	Lt. Blue	19.2 – 20.7	81.8 – 100.7
25	Tan	Blue	Lt. Blue	21.6 – 23.5	108.3 – 135.3
33	Tan	Grey	Lt. Blue	22.6 – 24.7	117.0 – 144.6
38	Tan	Red	Lt. Blue	23.5 – 26.5	132.6 – 165.0
43	Tan	Dk. Brown	Blue	25.3 – 27.1	156.3 – 184.7
48	Dk. Brown	Dk. Green	Dk. Blue	27.4 – 29.3	177.5 – 202.5
53	Dk. Brown	D. Blue	Dk. Blue	27.1 – 29.6	188.5 – 221.4

FULL/PART CIRCLE NOZZLES					
NOZZLE SET	COLOURS			RADIUS	FLOW
	Side	Main	Side		
				m	l.p.m.
10	Orange	Lt. Green	Dk. Green	11.3 – 12.5	33.7 – 38.6
13	Orange	Lt. Blue	White	14.3 – 14.9	43.2 – 48.8
15	Orange	White	White	15.9 – 16.5	48.8 – 62.5
18	Orange	Orange	Lt. Green	17.4 – 18.6	62.8 – 77.6
20	Orange	Tan	Lt. Green	18.0 – 19.5	67.8 – 83.7
23	Orange	Green	Lt Green	19.8 – 21.0	76.5 – 98.0
25	Red	Blue	Green	21.6 – 22.9	107.1 – 134.0
33	Red	Grey	Green	21.9 – 24.1	115.8 – 143.5
38	Red	Red	Green	23.2 – 25.6	132.1 – 164.7
43	Red	Dk. Brown	Green	24.7 – 27.1	156.0 – 184.3
48	Dk. Red	Dk. Green	Dk. Green	25.3 – 27.7	176.3 – 206.3
53	Dk. Red	Dk. Blue	Dk. Green	26.5 – 28.7	191.9 – 225.6

Operating pressure range: 3.4 Bar to 6.9 Bar

Pressure rating: 10 Bar

Inlet: 1 1/2" BSP

Warranty: 5 years

SPORTS AND LANDSCAPE ROTORS

I-90 ROTORS

APPLICATIONS

- Sports pitches

FEATURES AND BENEFITS

22.3m to 31.4m radius

Full and part circle arc, 40° to 360°, simplifying stocking and installation

Through the top arc adjustment making adjustment simple

QuickCheck™ arc mechanism simplifies arc checking and adjustment

Factory installed rubber cover protecting the rotor from damage

Colour coded nozzles

THE HUNTER I-90 ROTOR IS AVAILABLE IN THE FOLLOWING CONFIGURATIONS:

08 3½"/8cm pop-up

Plastic riser

ADV – Adjustable arc

36V – Full circle only, opposing nozzle

ON - Opposing nozzle full circle model

Turf cup

Standard drain check valve up to 2.0m elevation

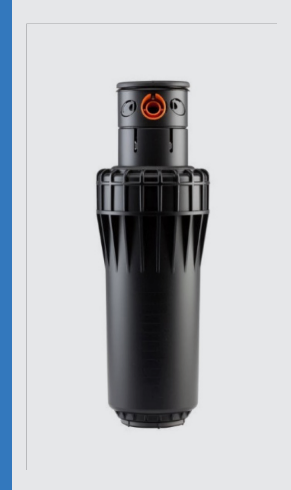
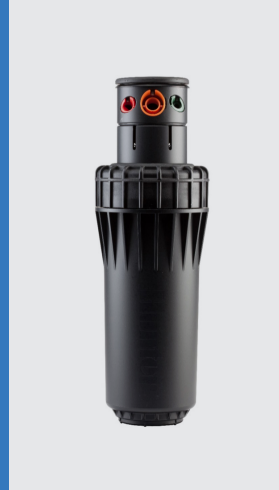


NETAFIM CODE		HUNTER CODE	DESCRIPTION
76700-901050	Z9048	I9036VB	I-90 Full circle rotor
76700-901950	Z9049	I90ADVB	I-90 Full/Part circle rotor
76800-904260	Z9086A	525400	I-90 Full circle riser assembly
76800-904360	Z9071	467955	I-90 Turf cup

TECHNICAL DATA

36V NOZZLE

NOZZLE	COLOUR	RADIUS	FLOW
		m	l.p.m.
25	Light Blue	22.3 – 23.8	115.5 – 138.2
33	Grey	23.5 – 24.7	137.4 – 161.6
38	Red	24.4 – 25.9	153.7 – 180.6
43	Dark Brown	25.3 – 26.2	174.9 – 202.1
48	Dark Green	26.2 – 27.7	187.8 – 216.9
53	Dark Blue	27.1 – 28.7	205.2 – 243.0
63	Black	28.0 – 29.9	239.2 – 283.5
73	Orange	29.3 – 31.4	272.9 – 315.3



ADV NOZZLE

NOZZLE	COLOUR	RADIUS	FLOW
		m	l.p.m.
25	Light Blue	20.1 – 21.0	111.7 – 134.8
33	Grey	20.7 – 21.6	137.0 – 161.3
38	Red	21.9 – 23.2	153.7 – 180.2
43	Dark Brown	22.6 – 23.5	174.5 – 202.1
48	Dark Green	23.5 – 25.0	190.0 – 217.7
53	Dark Blue	24.7 – 26.8	207.8 – 243.8
63	Black	26.2 – 28.0	235.8 – 282.8
73	Orange	27.1 – 29.6	275.2 – 317.2



Operating pressure range: 5.5 Bar to 8.0Bar

Inlet: 1 1/2" BSP

Warranty: 5 years

SPORTS AND LANDSCAPE GOLF ROTORS

G35B AND G835E GOLF ROTORS

APPLICATIONS

- Tees, walkways

FEATURES AND BENEFITS

5.5m to 15.2m radius

Nozzle rack included

Full and part circle arc, 50° to 360°

QuickSet 360° arc mechanism

QuickCheck™ arc mechanism

G85B – block rotor with check valve

NETAFIM CODE		HUNTER CODE	DESCRIPTION
76800-901500	Z9027D	G35B6S	G35 Full/Part circle block rotor
76700-005711		G835E6P5S	G835 Full/Part circle Electric Valve-in- Head rotor
76800-902960	Z9085	563400	G800 Bottom valve assembly
76800-902860	Z9067	604000	G800 Valve insertion/removal tool
76800-908360	Z9068	475600	Long handled circlip/valve pliers
76800-906260	Z9066	052510	Golf rotor snap ring removal tool



TECHNICAL DATA

NOZZLE	COLOUR	RADIUS	FLOW
		m	l.p.m.
2	Yellow	5.5 – 7.0	7.2 – 9.8
3	Yellow	7.0 – 8.5	11.4 – 13.6
4	Yellow	7.6 – 9.4	14.8 – 17.4
5	Yellow	8.8 – 10.7	17.8 – 20.4
6	Yellow	9.8 – 11.9	22.7 – 25.7
8	Yellow	11.0 – 13.1	29.5 – 32.2
10	Yellow	11.9 – 14.3	36.7 – 39.7
12	Yellow	13.4 – 15.2	45.4 – 48.5

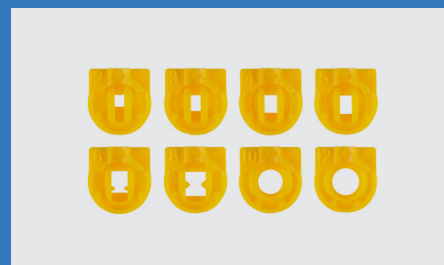
G85B and G835E is supplied with the Number 6 factory fitted nozzle

Operating pressure range: 2.8 Bar to 4.5 Bar

Inlet: 1¼" ACME

Pressure rating: 10 Bar

Warranty: 3 years



G70B AND G75B GOLF ROTORS

APPLICATIONS

- Golf greens

FEATURES AND BENEFITS

14.3m to 22.9m radius

Nozzle rack included

G70B - Full circle only

G75B - Full and part circle arc, 50° to 360°

G70B



G75B



NETAFIM CODE		HUNTER CODE	DESCRIPTION
76700-900250	Z9032	G70B25S	G70 Full circle block rotor
76700-900730	Z9033	G75B25S	G75 Full/Part circle block rotor
76800-902660	Z9087	474211	G75 Riser assembly
76800-908360	Z9068	475600	Long handled circlip/valve pliers
76800-906260	Z9066	052510	Golf rotor snap ring removal tool

TECHNICAL DATA

G70B

NOZZLE	COLOUR	RADIUS	FLOW
		m	l.p.m.
15	Grey	16.2 – 17.7	49.2 – 61.7
18	Red	17.7 – 18.6	53.8 – 67.4
20	Dark Brown	18.6 – 19.5	71.2 – 88.6
23	Dark Green	19.2 – 20.4	76.1 – 94.3
25	Dark Blue	19.8 – 21.6	82.5 – 101.8
28	Black	21.6 – 22.9	106.4 – 127.6

G75B

NOZZLE	COLOUR	RADIUS	FLOW
		m	l.p.m.
8	Lt. Brown	14.3 – 15.5	29.1 – 37.5
10	Lt. Green	16.2 – 17.1	41.3 – 54.1
13	Lt. Blue	16.8 – 17.4	42.4 – 54.1
15	Grey	17.4 – 18.3	50.7 – 62.1
18	Red	18.3 – 19.2	54.9 – 68.9
20	Dk. Brown	18.9 – 19.8	67.4 – 82.5
23	Dk. Green	19.5 – 20.4	82.9 – 102.2
25	D. Blue	19.8 – 21.6	89.0 – 109.8
28	Black	20.1 – 21.6	101.8 – 122.3

G70B and G75B is supplied with the Number 25 factory fitted nozzle

Operating pressure range: G70B 3.4 Bar to 6.9 Bar, G75B 2.8 Bar to 6.9 Barr

Inlet: 1¼" ACME

Pop-up height: 8.0 cm

Pressure rating: 10 Bar

Warranty: 3 years

SPORTS AND LANDSCAPE

GOLF ROTORS

G80B AND G85B GOLF ROTORS

APPLICATIONS

- Golf greens

FEATURES AND BENEFITS

Block rotor with check valve

13.1m to 26.8m radius

G80B - Full circle only

G85B - Full and part circle arc, 60° to 360°

QuickCheck™ arc mechanism – G85B

QuickSet 360° arc mechanism – G85B

Standard and low angle nozzles

Opposing nozzles – G80B

Contour “Back Nozzle” capability – G85B

Ratcheting stainless steel riser – G85B

G80B



NETAFIM CODE		HUNTER CODE	DESCRIPTION
76700-900190	Z9028G	G80B25S	G80B Full circle block rotor
76700-900200	Z9028H	G85B25S	G85 Full/Part circle golf rotor
76800-906260	Z9066	052510	Golf rotor snap ring removal tool

TECHNICAL DATA

G80B			
NOZZLE	COLOUR	RADIUS	FLOW
		m	l.p.m.
23	Green	20.4 – 22.3	85.2 – 112.8
25	Blue	21.6 – 23.2	109.0 – 136.3
33	Grey	22.3 – 23.8	117.3 – 146.9
38	Red	23.3 – 24.7	132.9 – 162.4
43	Dark Brown	23.8 – 25.6	148.4 – 184.7
48	Dark Green	25.0 – 26.5	165.8 – 205.9
53	Dark Blue	25.3 – 26.8	177.5 – 219.2

G80B and G5B is supplied with the Number 25 factory fitted nozzle

Operating pressure range: G70B 4.5 Bar to 6.9 Bar, G85B 3.4 Bar to 6.9 Bar

Inlet: 1¼" ACME

Pop-up height: G80B 8.0 cm, G85B 9.5 cm

Pressure rating: 10 Bar

Warranty: 3 years



G85B					
NOZZLE SET	COLOURS			RADIUS	FLOW
	Side	Main	Side		
				m	l.p.m.
10	Orange	Lt. Green	Dk. Green	13.1 – 13.7	31.0 – 38.2
13	Orange	Lt. Blue	White	14.6 – 15.5	44.3 – 50.7
15	Orange	White	White	15.9 – 16.5	50.3 – 57.5
18	Orange	Orange	Lt. Green	16.8 – 17.7	63.2 – 68.9
20	Orange	Tan	Lt. Green	17.7 – 18.9	69.7 – 85.6
23	Orange	Green	Lt Green	18.6 – 20.4	79.6 – 105.6
25	Red	Blue	Green	21.0 – 22.3	111.3 – 137.4
33	Red	Grey	Green	22.3 – 23.2	130.4 – 145.7
38	Red	Red	Green	24.1 – 24.4	149.0 – 162.4
43	Red	Dk. Brown	Green	24.4 – 25.3	164.7 – 184.3
48	Dk. Red	Dk. Green	Dk. Green	25.9 – 26.8	186.6 – 207.1
53	Dk. Red	Dk. Blue	Dk. Green	27.1 – 27.7	199.7 – 217.7

SPORTS AND LANDSCAPE GOLF ROTORS

G884E AND G885E GOLF ROTORS

APPLICATIONS

- Golf greens, fairways, tees, sports pitches

FEATURES AND BENEFITS

Electric valve-in-head rotor

13.1m to 28.3m radius

G884E – Full circle only

G885E - Full and part circle arc, 60° to 360°

QuickCheck™ arc mechanism – G885E

QuickSet 360° arc mechanism – G885E

Dual trajectory colour coded nozzles

G885E

- 12 standard 22.5° trajectory
- 9 low angle 15° trajectory

G884E

- 10 standard 22.5° trajectory
- 9 low angle 15° trajectory

Standard and low angle nozzles

Opposing nozzles – G884E

Contour “Back Nozzle” capability – G885E

Ratcheting stainless steel riser – G885E

Stainless steel riser – G884E

G884E



G885E



G885E



NETAFIM CODE		HUNTER CODE	DESCRIPTION
76700-005710		G884E25P8S	G884E Full circle Electric Valve-in- Head rotor
76700-900860	Z9028F	G885E25P8S	G885 Full/Part circle Electric Valve-in- Head rotor
76700-009360		460052	G885 Riser assembly
76800-902960	Z9085	563400	G800 Bottom valve assembly
76800-902860	Z9067	604000	G800 Valve insertion/removal tool
76800-908360	Z9068	475600	Long handled circlip/valve pliers
76800-906260	Z9066	052510	Golf rotor snap ring removal tool
02380-999151	Z9885OR	803603	G885 Back nozzle - Orange
02380-999152	Z9885R	803602	G885 Back nozzle - Red
02380-999149	Z9885DR	803602	G885 Back nozzle - Dark red
02380-999155	Z9885W	315314	G885 Back nozzle - White
02380-999150	Z9885LG	315310	G885 Back nozzle - Lt green
02380-999154	Z9885G	315310	G885 Back nozzle - Green
02380-999153	Z9885DG	315312	G885 Back nozzle - Dark green

TECHNICAL DATA

G884E					
NOZZLE SET	COLOURS			RADIUS	FLOW
	Side	Main	Side		
				m	l.p.m.
15	Tan	White	Grey	14.9 – 16.8	54.6 – 68.9
18	Tan	Orange	Grey	16.8 – 18.6	66.1 – 82.4
20	Tan	Brown	Grey	17.4 – 19.5	65.2 – 83.6
23	Tan	Green	Lt. Blue	19.2 – 20.4	74.8 – 96.6
25	Tan	Blue	Lt. Blue	21.6 – 22.9	108.3 – 135.3
33	Tan	Grey	Lt. Blue	22.3 – 24.1	117.0 – 144.1
38	Tan	Red	Lt. Blue	22.9 – 25.0	132.6 – 164.4
43	Tan	Dk. Brown	Blue	25.3 – 26.5	164.1 – 183.9
48	Dk. Brown	Dk. Green	Dk. Blue	25.9 – 27.7	181.2 – 201.4
53	Dk. Brown	D. Blue	Dk. Blue	27.1 – 28.3	197.7 – 220.6

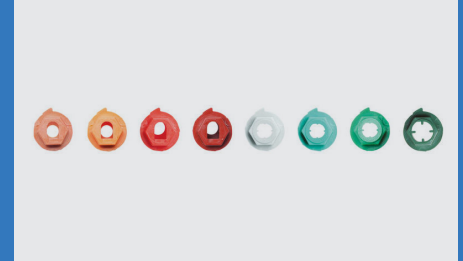


G885E					
NOZZLE SET	COLOURS			RADIUS	FLOW
	Side	Main	Side		
				m	l.p.m.
10	Orange	Lt. Green	Dk. Green	13.1 – 13.7	31.0 – 38.2
13	Orange	Lt. Blue	White	14.6 – 15.5	44.3 – 50.7
15	Orange	White	White	15.9 – 16.5	50.3 – 57.5
18	Orange	Orange	Lt. Green	16.8 – 17.7	63.2 – 68.9
20	Orange	Tan	Lt. Green	17.7 – 18.9	69.7 – 85.6
23	Orange	Green	Lt Green	18.6 – 20.4	79.6 – 105.6
25	Red	Blue	Green	21.0 – 22.3	111.3 – 137.4
33	Red	Grey	Green	22.3 – 23.2	130.4 – 145.7
38	Red	Red	Green	24.1 – 24.4	149.0 – 162.4
43	Red	Dk. Brown	Green	24.4 – 25.3	164.7 – 184.3
48	Dk. Red	Dk. Green	Dk. Green	25.9 – 26.8	186.6 – 207.1
53	Dk. Red	Dk. Blue	Dk. Green	27.1 – 27.7	199.7 – 217.7

TECHNICAL DATA

CONTOUR BACK-NOZZLES

P/N	COLOURS	4.5 BAR		5.5 BAR	
		Radius	Flow	Radius	Flow
		m	l.p.m	m	l.p.m
803604	Peach	7.6	12.9	8.2	14.8
803603	Orange	8.5	14.4	8.8	15.9
803602	Red	9.4	15.9	10.1	17.0
803601	Dk. Red	10.4	17.4	11.00	18.5
315314	White	11.3	10.6	11.6	11.0
315313	Lt. Green	12.8	16.3	13.4	17.8
315310	Green	14.0	19.7	14.6	21.6
315312	Dk. Green	14.9	29.9	15.5	33.3



G880E and G885E is supplied with the Number 25 factory fitted nozzle and 4.5 Bar pressure regulation pilot valves.

Operating pressure range: G880E 4.5 Bar to 6.9 Bar, G885E 3.4 Bar to 6.9 Bar

Inlet: 1½" ACME

Pop-up height: G880E 8.0 cm, G885E 9.5 cm

Pressure rating: 10 Bar

Solenoid: 210mA holding, 370mA inrush

Warranty: 3 years

G990E AND G995E GOLF ROTORS

APPLICATIONS

- Golf greens, golf fairways, sports pitches

FEATURES AND BENEFITS

Electric valve-in-head rotor with Through the Top Servicing

22.3m to 31.4m radius

G990E - Full circle only

G995E - Full and part circle arc, 40° to 360°

QuickCheck™ arc mechanism – G885E

Standard and low angle nozzles

Opposing nozzles – G990E

Contour "Back Nozzle" capability – G995E

G990



G995



G990E AND G995E GOLF ROTORS

NETAFIM CODE		HUNTER CODE	DESCRIPTION
76700-900900	Z9030	G990E53P8S	G990 Full circle Electric Valve-in- Head rotor
76700-900870	Z9031	G995E53P8S	G995 Full/Part circle Electric Valve-in- Head rotor
76700-900590	Z9030B	463002	G990 Full circle riser assembly
76800-902860	Z9067	604000	G800 Valve insertion/removal tool
76800-903860	Z9086	463004	G995 Part circle riser assembly
76700-900680	Z9031B	430800	G995 Part circle snap ring assembly
76700-900520	Z9089	643200	G900 Bottom valve assembly
76800-906260	Z9066	052510	Golf rotor snap ring removal tool
76800-903760	Z9068	052805	G900 valve insertion/removal tool
76800-908360	Z9068	475600	Long handled circlip/valve pliers

TECHNICAL DATA

G990E			
NOZZLE	COLOUR	RADIUS	FLOW
		m	l.p.m.
25	Light Blue	22.3 – 24.1	115.5 – 145.4
33	Grey	23.5 – 25.0	137.4 – 170.0
38	Red	24.4 – 26.2	153.7 – 190.0
43	Dark Brown	25.3 – 26.5	174.9 – 211.6
48	Dark Green	26.2 – 28.0	187.8 – 225.2
53	Dark Blue	27.1 – 28.7	205.2 – 243.0
63	Black	28.0 – 29.9	239.2 – 283.5
73	Orange	29.3 – 31.4	272.9 – 315.3

G990E and G995E is supplied with the Number 53 factory fitted nozzle and 5.5 Bar pressure regulation pilot valves.

Operating pressure range: G990E 5.5 Bar to 8.3 Bar, G995E 5.5 Bar to 8.3 Bar

Inlet: 1½" ACME

G995E			
NOZZLE	COLOUR	RADIUS	FLOW
		m	l.p.m.
25	Light Blue	20.1 – 21.0	111.7 – 142.0
33	Grey	20.7 – 21.9	137.0 – 169.6
38	Red	21.9 – 23.5	153.7 – 189.3
43	Dark Brown	22.6 – 23.8	174.5 – 210.8
48	Dark Green	23.5 – 25.3	190.0 – 229.0
53	Dark Blue	24.7 – 26.8	207.8 – 243.8
63	Black	26.2 – 28.0	235.8 – 282.8
73	Orange	27.1 – 29.6	275.2 – 317.2

Pop-up height: 8.0 cm

Pressure rating: 10 Bar

Solenoid: 210mA holding, 370mA inrush

Warranty: 3 years

SPORTS AND LANDSCAPE

DURA SWING JOINTS AND HUNTER GOLF ROTOR ADAPTORS

DURA SWING JOINTS

NETAFIM CODE		DESCRIPTION
02290-001000	Z9171	3/4" MBSP x 12" x 3/4" MBSP
02290-001020	Z9173	1" MBSP x 12" x 1" MBSP
02290-001040	Z9174	1" MBSP x 12" x 11/4" ACME
02290-001060	Z9170	1" MBSP x 8" x 1" MBSP
02290-001080	Z9175	11/4" MBSP x 12" x 11/4" ACME
02290-001100	Z9175A	11/4" MBSP x 12" x 11/2" ACME
02290-001120	Z9176	11/2" MBSP x 12" x 11/2" ACME
02290-001140	Z9172	11/2" MBSP x 12" x 11/2" MBSP
76800-003670	Z9177	3/4" MBSP X 3/4" FBSP Elbow
76800-003680	Z9178	1" MBSP X 1" FBSP Elbow
76800-003690	Z9180	11/4" MBSP X 11/4" FBSP Elbow
76800-003700	Z9179	11/2" Male x 11/2" FBSP Elbow

HUNTER GOLF ROTOR ADAPTORS

NETAFIM CODE		DESCRIPTION
76800-901240	Z9070B	11/2" female ACME x 1" female BSP
76800-901250	Z9070A	11/2" female ACME x 11/4" female BSP
76800-901260	Z9070	11/2" male ACME x 11/2" female BSP
76800-901270	Z9069	11/4" male ACME x 1" female BSP

SPORTS AND LANDSCAPE

ROTOR SPARES, NOZZLE PACKS AND TOOLS

ROTOR TOOLS



NETAFIM CODE	Z	HUNTER CODE	DESCRIPTION
76800-904860	Z9068A	280100SP	Pitot tube and gauge
76700-005500	Z9081	053191	Adjustment key/wrench

NOZZLE PACKS I-SERIES ROTORS

NETAFIM CODE	Z	HUNTER CODE	DESCRIPTION
76700-901010	Z9038A	782900SP	I-20 Standard and low angle nozzle pack
76700-901000	Z9038B	466100SP	I-20 Short radius nozzle pack
76700-901180	Z9083	462459SP	I-40 #15 to #28 nozzle pack

GOLF ROTORS

NETAFIM CODE	Z	HUNTER CODE	DESCRIPTION
76700-901180	Z9083	462459SP	G70/G870 #15 to #28 nozzle pack
76700-901170	Z9084	461532	G75/G875 #15 to #28 nozzle pack
76700-901200	Z9083A	460002	G80 #25 to #53 nozzle pack
76700-901160	Z9083B	460023	G85B #10 to #20 nozzle pack
76700-901190	Z9084A	460024	G885 #23 to #33 nozzle pack
76700-901220	Z9083C	460025	G885 #38 to #53 nozzle pack
76700-901210	Z9082	461204	G990/G995 #33 to #63 nozzle pack

SPORTS AND LANDSCAPE CONTROLLERS

X-CORE® CONTROLLERS

APPLICATIONS

- Residential, light commercial, bowling greens

FEATURES AND BENEFITS

2,4, 6 and 8 stations fixed

Indoor and outdoor enclosures

3 independent programmes

4 start times per programme

4 hour maximum run time

Built-in Solar Sync® software

Programmable rain delay

Non-volatile memory

2 year warranty

Easy Retrieve™ memory

QuickCheck™

Solar-Sync® delay

Global seasonal adjustment

Automatic global adjustment with Solar-Sync



NETAFIM CODE		HUNTER CODE	DESCRIPTION
76800-900840	Z9026C	XC401iE	X-Core 4 station - indoor
76800-900860	Z9026D	XC601iE	X-Core 6 station - indoor
76800-900880	Z9026E	XC801iE	X-Core 8 station - indoor
76800-900850	Z9025A	XC401E	X-Core 4 station - outdoor
76800-900870	Z9026A	XC601E	X-Core 6 station - outdoor
76800-900890	Z9026B	XC801E	X-Core 8 station - outdoor

TECHNICAL DATA

TRANSFORMER INPUT	TRANSFORMER OUTPUT 24VAC	STATION OUTPUT 24 VAC	PUMP RELAY/MASTER VALVE 24VAC	SENSOR INPUTS	OPERATING TEMPERATURE
230VAC	1 Amp	0.56 Amps	0.28 Amps	1	-18°C to 60°C



SPORTS AND LANDSCAPE MAINS CONTROLLERS

HUNTER PRO-C® AND PCC CONTROLLERS

APPLICATIONS

- Residential, light commercial, bowling greens

FEATURES AND BENEFITS

PRO-C® - 4 to 16 stations – modular expansion

PCC 6 & 12 fixed stations

PRO-C® station expansion modules – 3 and 9 station.

3 stations modules for expansion to 7, 10 or 13 stations

9 station module for expansion from 7 to 16 only

Indoor and outdoor enclosures

3 independent programmes

4 start times per programme

6 hour maximum run time

Built-in Solar Sync® software

Programmable rain delay

Non-volatile memory

2 year warranty

Easy Retrieve™ memory

QuickCheck™

Automatic short circuit protection

Solar-Sync® delay up to 99 days

Global seasonal adjustment

Automatic global adjustment with Solar-Sync®

Delay between stations

Sensor programmability

Non-water days

CODE		HUNTER CODE	DESCRIPTION
76800-900630	Z9020D	PCC601E	PRO-C Conventional 6 station – plastic outdoor
76800-900590	Z9020D	PCC1201E	PRO-C Conventional 12 station – plastic outdoor
76800-900160	Z9020C	PC401E	PRO-C Modular 4 station – plastic outdoor
76800-900600	Z9021	PCM300	PRO-C 3 station expansion module
76800-900650	Z9022	PCM900	PRO-C 9 station expansion module
76800-900580		HPCFP	PRO-C Wi-Fi retrofit panel

See also PRO-C Hydrowise controller on page 48

TECHNICAL DATA

TRANSFORMER INPUT	TRANSFORMER OUTPUT 24VAC	STATION OUTPUT 24 VAC	PUMP RELAY/MASTER VALVE 24VAC	SENSOR INPUTS	OPERATING TEMPERATURE
230VAC	1 Amp	0.56 Amps	0.28 Amps	1	-18°C to 60°C

HUNTER PRO-C HYDRAWISE CONTROLLERS

APPLICATIONS

- Residential, light commercial

FEATURES AND BENEFITS

Wi-Fi enabled for quick connection to Hydrawise software

PRO-C® station expansion modules – 3 and 9 station.

3 stations modules for expansion to 7, 10 or 13 stations

9 station module for expansion from 7 to 16 only

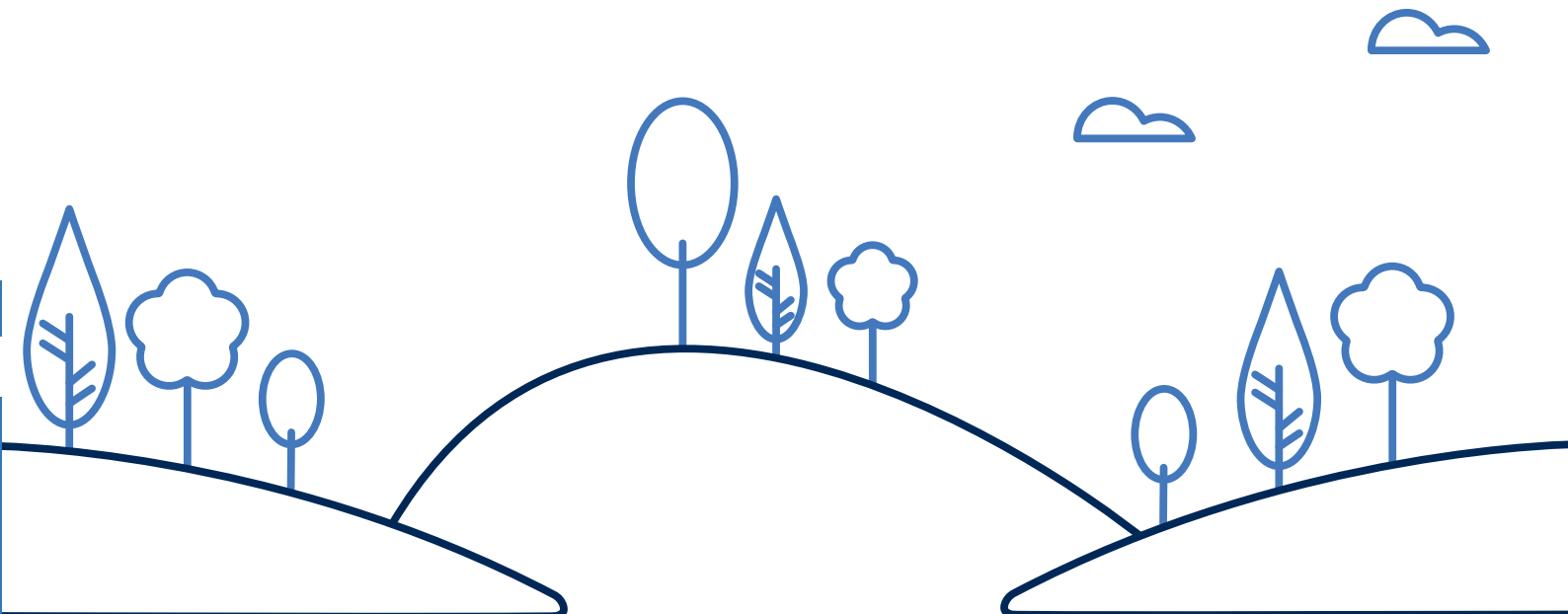
2.8" TFT full colour touch screen

Retro fit panel to allow conversion of standard PRO-C controllers to Hydrawise

1 sensor input

2 year warranty

NETAFIM CODE		HUNTER CODE	DESCRIPTION
76800-900611		HPC401E	PRO-C Hydrawise 4 station – plastic outdoor
76800-900580		HPCFP	PRO-C Wi-Fi retrofit panel
76800-900600	Z9021	PCM300	PRO-C 3 station expansion module
76800-900650	Z9022	PCM900	PRO-C 9 station expansion module



SPORTS AND LANDSCAPE CONTROLLERS

ICC2 CONTROLLERS

APPLICATIONS

- Residential, light and medium commercial, bowling greens

FEATURES AND BENEFITS

8 to 38 stations – plastic cabinet

8 to 54 stations – metal cabinet

4, 8 and 22 station expansion modules

4 and 8 station expansion modules backward compatible with original ICC controllers

22 station expansion module ICC2 only (can be used with ICC2 Retrofit Kit)

Outdoor enclosure

Backlit display

4 independent programmes

8 start times per programme

12 hour maximum run time

2 simultaneous programmes

Built-in Solar Sync® software

Programmable rain delay

Non-volatile memory

5 year warranty

Easy Retrieve™ memory

QuickCheck™

Automatic short circuit protection

Solar-Sync® delay up to 99 days

Global seasonal adjustment

Automatic global adjustment with Solar-Sync®

Delay between stations

Sensor programmability

Programmable Klik display

Non-water days

One touch manual start and advance

ICC2 Retrofit Kit available allowing upgrade of original ICC to ICC2 with increased station capacity

NETAFIM CODE	HUNTER CODE	DESCRIPTION
76800-900321	IC2800PL	ICC2 8 station – plastic outdoor
76800-900300	ICM400	ICC & ICC2 4 station module
76800-900320	ICM800	ICC & ICC2 8 station module
76800-900322	ICM2200	ICC2 22 station module
76800-900323	ICC-FPUP-2	ICC2 Retrofit Panel



TECHNICAL DATA

TRANSFORMER INPUT	TRANSFORMER OUTPUT 24VAC	STATION OUTPUT 24 VAC	PUMP RELAY/MASTER VALVE 24VAC	SENSOR INPUTS
230VAC	1.4 Amp	0.56 Amps	0.56 Amps	1



SPORTS AND LANDSCAPE MAIN CONTROLLERS

HUNTER EZ DECODER SYSTEM

APPLICATIONS

- Medium residential and commercial landscape, sports pitches

FEATURES AND BENEFITS

Two wire decoder system for ICC2 and HCC controllers

Up to 54 stations in either multewire or decoder combination

1 station decoders

External DUAL-S surge protection

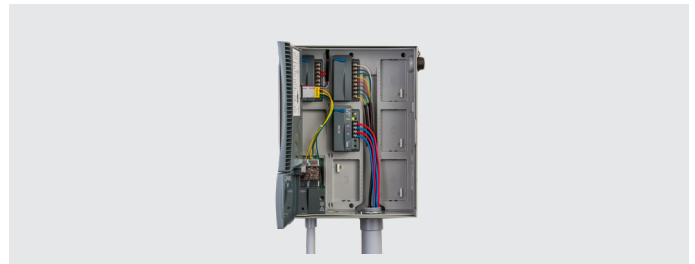
Up to 2 wire paths

Outdoor enclosure

Simple push button decoder programming

IP68 rated decoders

No need for special wire or connectors



NETAFIM CODE	HUNTER CODE	DESCRIPTION
76800-900291	EZDM	ICC2/HCC 48 station decoder module
76800-900292	EZ1	EZ 1 station decoder

TECHNICAL DATA

MAX. RECOMMENDED DISTANCE	CONTROLLER TO DECODER	0.8MM ² CABLE	1.0MM ² CABLE	1.5MM ² CABLE	2.5MM ² CABLE	2.5MM ² CABLE
		267m	333m	500m	833m	1,333m

SPORTS AND LANDSCAPE CONTROLLERS

I-CORE® CONTROLLERS

APPLICATIONS

- Medium commercial landscape, sports pitches

FEATURES AND BENEFITS

6 to 30 stations – plastic cabinet

6 to 42 stations – metal cabinet

6 station expansion module

Outdoor enclosure

4 independent programmes

8 start times per programme

12 hour maximum run time

Built-in Solar Sync® software

Programmable rain delay

Non-volatile memory

Real time flow monitoring

Total run time calculator

5 year warranty

Easy Retrieve™ memory

QuickCheck™

Automatic short circuit protection

Solar-Sync® delay up to 99 days

Global and Monthly seasonal adjustment

Automatic global adjustment with Solar-Sync®

Delay between stations

Sensor programmability

Programmable Click display

No water window

Non-water days

One touch manual start and advance

NETAFIM CODE	HUNTER CODE	DESCRIPTION
76800-901020	Z9097	IC601PL I-CORE 6 station - plastic outdoor
76800-901010	Z9096	IC600M I-CORE 6 station - metal outdoor
76800-900490	Z9098	ICM600 I-CORE 6 station module



TECHNICAL DATA

TRANSFORMER INPUT	TRANSFORMER OUTPUT 24VAC	STATION OUTPUT 24 VAC	PUMP RELAY/ MASTER VALVE 24VAC	SENSOR INPUTS
230VAC	1.4 Amp	0.56 Amps	0.56 Amps	Plastic 2 Metal 3

SPORTS AND LANDSCAPE CONTROLLERS

DUAL® CONTROLLER

APPLICATIONS

- Medium commercial landscape, sports pitches

FEATURES AND BENEFITS

Two wire decoder system for I-Core controllers

6 to 48 stations in either multiwire or decoder combination

1 and 2 station programmable decoders

External DUAL-S surge protection

Up to 3 wire paths

Outdoor enclosure

Solenoid finder feature

Wireless programming using ICD-HP hand-held programmer

4 independent programmes

8 start times per programme

12 hour maximum run time

Built-in Solar Sync® software

Programmable rain delay

Non-volatile memory

Real time flow monitoring

Total run time calculator

5 year warranty

Easy Retrieve™ memory

QuickCheck™

Automatic short circuit protection

Solar-Sync® delay up to 99 days

Global and Monthly seasonal adjustment

Automatic global adjustment with Solar-Sync®

Delay between stations

Sensor programmability

Programmable Click display

No water window

Non-water days

One touch manual start and advance

NETAFIM CODE	HUNTER CODE	DESCRIPTION	
76800-901140	Z9092	DUAL48M	DUAL 48 station decoder module
76800-901120	Z9093	DUAL1	DUAL 1 station decoder
76800-901130	Z9094	DUAL2	DUAL 2 station decoder
76800-901750	Z9095	DUALS	DUAL Surge suppression module
76800-904060	Z9010A	ICDHP	Decoder hand-held programmer



TECHNICAL DATA

MAX. RECOMMENDED DISTANCE	CONTROLLER TO DECODER	DECODER TO SOLENOID
2.5mm ² cable	1500m	30m



SPORTS AND LANDSCAPE CONTROLLERS

ACC-99D CONTROLLER

APPLICATIONS

- Commercial landscape, sports pitches, training grounds

FEATURES AND BENEFITS

Two wire decoder system

1 to 99 stations

1, 2, 4 and 6 station programmable decoders

Sensor decoder with Flow and Klik inputs

Up to 6 wire paths

Outdoor metal enclosure

Decoder programming and testing using ICD-HP hand-held programmer

6 independent programmes

10 start times per programme

Simultaneous station groups

6 hour maximum run time

Built-in Solar Sync® software

Programmable rain delay

Non-volatile memory

Real time flow monitoring

Total run time calculator

5 year warranty

Easy Retrieve™ memory

QuickCheck™

Automatic short circuit protection

Solar-Sync® delay up to 99 days

Global and Monthly seasonal adjustment

Automatic global adjustment with Solar-Sync®

Delay between stations

Sensor programmability

Programmable Klik display

No water window

Non-water days

One touch manual start and advance

NETAFIM CODE		HUNTER CODE	DESCRIPTION
76800-900120	Z9000	ACC99D	ACC 99 station decoder controller
76800-900130	Z9000C	ADM99	ACC decoder output module
76800-900350	Z9010	ICD100	ACC & ACC2 1 station decoder
76800-900360	Z9011	ICD200	ACC & ACC2 2 station decoder
76800-900370	Z9012	ICD400	ACC & ACC2 4 station decoder
76800-900380	Z9013	ICD600	ACC & ACC2 6 station decoder
76800-900390	Z9014	ICDSEN	ACC & ACC2 sensor decoder
76800-904060	Z9010A	ICDHP	Decoder hand-held programmer



TECHNICAL DATA

TRANSFORMER INPUT	230VAC
MAX. AC CURRENT DRAW	1 Amp
TRANSFORMER OUTPUT	24VAC
DECODER LINE OUTPUT	34V
DECODER POWER DRAW PER ACTIVE OUTPUT	40mA
SOLENOID CAPACITY – STANDARD HUNTER SOLENOIDS PER OUTPUT WITHIN 45M	2
MAX. NUMBER OF SOLENOIDS SIMULTANEOUSLY	14
MAX. RECOMMENDED DISTANCE	
CONTROLLER TO DECODER	
2.5MM ² CABLE	3000m
DECODER TO SOLENOID	45m



SPORTS AND LANDSCAPE CONTROLLERS

ACC2-75D CONTROLLER

APPLICATIONS

- Commercial landscape, sports pitches, training grounds, golf courses

FEATURES AND BENEFITS

Two wire decoder system

1 to 225 stations

75 station base controller

75 station expansion modules

1, 2, 4 and 6 station programmable decoders – Hunter ICD decoders

Sensor decoder with Flow and Klik inputs

Up to 6 wire paths

Outdoor metal enclosure

Reversible high resolution backlit display panel

Decoder programming and testing using ICD-HP hand-held programmer

32 independent programmes

10 start times per programme

Simultaneous station groups

Station run time 15 seconds to 12 hours

Built-in Solar Sync® software

Programmable rain delay

Non-volatile memory

Real time flow monitoring and management – up to 6 flow meters and flow zones

Monthly flow monitoring

Decoder/solenoid finder

Up to 6 Pump Start/Master Valve outputs, N.O. or N.C.

5 year warranty

Easy Retrieve™ memory

SD card update and log storage

QuickCheck™ and wire test mode

Automatic short circuit protection

Solar-Sync® delay up to 99 days

Global and Monthly seasonal adjustment

Automatic global adjustment with Solar-Sync®

Delay between stations

Sensor programmability

Programmable Klik display

No water window

Non-water days

One touch manual start and advance

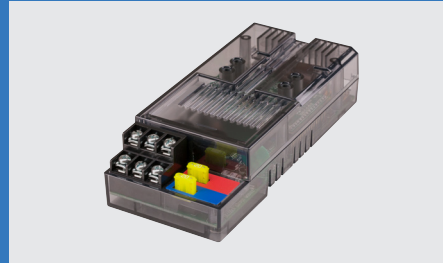
Optional Wi-Fi interface

NETAFIM CODE	HUNTER CODE	DESCRIPTION
76800-900210	A2C75DM	ACC2 75 station decoder controller
76800-900215	A2CD75	ACC2 75 station decoder expansion module
TBC	A2C-WIFI	ACC2 Internal Wi-Fi module



TECHNICAL DATA

TRANSFORMER INPUT	230VAC
MAX. AC CURRENT DRAW	1 Amp
TRANSFORMER OUTPUT	24VAC
DECODER LINE OUTPUT	34V
DECODER POWER DRAW PER ACTIVE OUTPUT	40mA
SOLENOID CAPACITY – STANDARD HUNTER SOLENOIDS PER OUTPUT WITHIN 45M	2
MAX. NUMBER OF SOLENOIDS SIMULTANEOUSLY	14
MAX. SIMULTANEOUS PROGRAMME OPERATION	20
MAX. RECOMMENDED DISTANCE	3000m
CONTROLLER TO DECODER	2.5mm ² cable
DECODER TO SOLENOID	45m
SENSOR INPUTS	
CLIK	3
SOLAR SYNC	1
FLOW	6



SPORTS AND LANDSCAPE CONTROLLERS

ICD-HP HAND HELD DECODER PROGRAMMER

APPLICATIONS

- Allows programming, re-programming and testing of Hunter decoders

FEATURES AND BENEFITS

Simplifies set up and diagnostics

Programming any station numbers in any order, or skip stations for future expansion

Sensor test functions for Klik and Flow sensors

Built-in multimeter

Communicates with decoder through a plastic case using wireless electro-magnetic induction eliminating the need for waterproof connectors

Compatible with ICD, DUAL® and Pilot® decoders

USB powered for workshop or office use

Can turn decoders on, view solenoid status and current

Backlit adjustable display

Comes in an outdoor foam-padded carrying case



NETAFIM CODE	HUNTER CODE	DESCRIPTION
76800-904060	Z9010A	ICDHP Decoder hand-held programmer

TECHNICAL DATA

POWER INPUT	4 x AA batteries or USB (inc.)
COMMUNICATION	Wireless induction
WIRELESS INDUCTION RAGE	24VAC
TEST LEADS	Fused

ROAM REMOTE

APPLICATIONS

- Remote operation of Hunter controllers

FEATURES AND BENEFITS

Works with X-Core®, PRO-C®, PCC, ICC2 and ACC via a SmartPort® connection

300 metre Line of Sight range

2 year warranty

NETAFIM CODE	HUNTER CODE	HUNTER CODE	DESCRIPTION
76800-905460	Z9005A	ROAMKIT	ROAM REMOTE Complete kit
76800-905360	Z9005B	ROAMR	ROAM REMOTE Receiver only
76800-905660	Z9005C	ROAMTR	ROAM REMOTE Transmitter only
76800-905560	Z9005D	ROAMSCWH	ROAM REMOTE 7.5m SmartPort extension wiring harness



TECHNICAL DATA

TRANSMITTER POWER SOURCE	4 x AAA batteries (inc.)
RECEIVER POWER SOURCE THROUGH SMARTPORT®	24VAC
SYSTEM OPERATING FREQUENCY	433MHz band
MAX. DISTANCE SMARTPORT® TO CONTROLLER USING ROAM-SCHW SHIELDED CABLE WIRING HARNESS	15m

SPORTS AND LANDSCAPE MAINS CONTROLLERS

HUNTER HC HYDRAWISE CONTROLLERS

APPLICATIONS

- Residential

FEATURES AND BENEFITS

Wi-Fi enabled for quick connection to Hydrawise software

6 and 12 stations – plastic cabinet - indoor

2.8" TFT full colour touch screen

2 sensor inputs

2 year warranty



CODE	HUNTER CODE	DESCRIPTION
76800-905570	HC601iE	HC 6 station – plastic indoor
76800-905580	HC1201iE	HC 12 station – plastic indoor

HUNTER PRO-HC HYDRAWISE CONTROLLERS

APPLICATIONS

- Residential
- Light commercial

FEATURES AND BENEFITS

Wi-Fi enabled for quick connection to Hydrawise software

6 and 12 stations – plastic cabinet - indoor

2.8" TFT full colour touch screen

2 sensor inputs

2 year warranty



CODE	HUNTER CODE	DESCRIPTION
76800-905570	HC601iE	HC 6 station – plastic indoor
76800-905580	HC1201iE	HC 12 station – plastic indoor

HUNTER PRO-C HYDRAWISE CONTROLLERS

APPLICATIONS

- Residential, light commercial

FEATURES AND BENEFITS

Wi-Fi enabled for quick connection to Hydrawise software

PRO-C® station expansion modules – 3 and 9 station.

3 stations modules for expansion to 7, 10 or 13 stations

9 station module for expansion from 7 to 16 only

2.8" TFT full colour touch screen

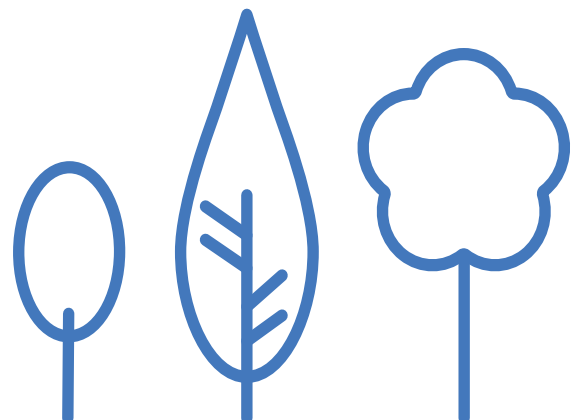
Retro fit panel to allow conversion of standard PRO-C controllers to Hydrawise

1 sensor input

2 year warranty



CODE		HUNTER CODE	DESCRIPTION
76800-900611		HPC401E	PRO-C Hydrawise 4 station – plastic outdoor
76800-900580		HPCFP	PRO-C Wi-Fi retrofit panel
76800-900600	Z9021	PCM300	PRO-C 3 station expansion module
76800-900650	Z9022	PCM900	PRO-C 9 station expansion module



HUNTER HCC HYDRAWISE CONTROLLERS

APPLICATIONS

- Residential

FEATURES AND BENEFITS

Wi-Fi enabled for quick connection to Hydrawise software

6 and 12 stations – plastic cabinet - indoor

3.2" Full colour touch screen

Built in milliamp sensor with wire fault detection and alerts

5 year warranty

Easy Retrieve™ memory



NETAFIM CODE	HUNTER CODE	DESCRIPTION
76800-906770	HCC800PL	HCC 8 station - plastic outdoor
76800-900325	ICM400	HCC/ICC & ICC2 4 station module
76800-900324	ICM800	HCC/ICC & ICC2 8 station module
76800-900322	ICM2200	HCC & ICC2 22 station module
76800-906770	HCC-FPUP-2	Retrofit Panel for ICC and ICC2

TECHNICAL DATA

TRANSFORMER INPUT	230VAC
TRANSFORMER OUTPUT 24VAC	1.4 Amp
STATION OUTPUT 24 VAC	0.56 Amps
PUMP RELAY/MASTER VALVE 24VAC	0.56 Amps
SENSOR INPUTS	2

SPORTS AND LANDSCAPE BATTERY POWERED CONTROLLERS

HUNTER BBT CONTROLLER

APPLICATIONS

- Single station tap timer with Bluetooth® connectivity and App control

FEATURES AND BENEFITS

Bluetooth® enabled programming for easy smartphone control

Allows management of an unlimited number of devices

Independent timer and cycling modes

6 and 24 hour maximum run times

Rain delay

Manual push button operation

Automatic water shutoff after 1 hour

Red LED low battery indicator

Secure passcode protection

Includes quick coupler adaptor

Drip adaptor option for 16mm to 18mm dripperlines

Batteries included

2 year warranty

NETAFIM CODE	HUNTER CODE	DESCRIPTION
76800-908562	BTT101	BTT Tap Timer with hose quick connector
76800-908562	BTTLOC	BTT Tap Timer Drip Adaptor



TECHNICAL DATA

POWER SUPPLY	2 x 9V batteries
BLUETOOTH®	4.0 Low Energy Module
FLOW RATE	0.04 to 57.00 l.p.m.
RECOMMENDED PRESSURE	0.5 Bar to 8 Bar
OPERATING TEMPERATURE	5°C to 60°C
APP REQUIREMENT	
IOS®	9.0 or above
ANDRIOD™	4.4 or above
COMMUNICATION	
OPTIMAL DISTANCE	3 to 5 m
MAXIMUM DISTANCE	10 m

SPORTS AND LANDSCAPE BATTERY POWERED CONTROLLERS

NODE CONTROLLERS

APPLICATIONS

- Residential, sites without mains power

FEATURES AND BENEFITS

1, 2, 4 and 6 stations fixed

Operates Hunter DC latching solenoids

Indoor and outdoor enclosures

3 independent programmes

4 start times per programme

6 hour maximum run time

Battery life indicator

Optional Solar Panel kit

One touch manual start and advance

Submersible to 4 metres – IP68 rated

Protective rubber cover

2 year warranty

Easy Retrieve™ memory

QuickCheck™

Solar-Sync® delay

Global seasonal adjustment



NETAFIM CODE		HUNTER CODE	DESCRIPTION
76800-900990	Z9023A	NODE100	NODE 1 station DC battery controller c/w solenoid coil
76800-901000	Z9023B	NODE400	NODE 4 station DC battery controller w/o solenoid coil
76800-906860	Z9064	458200	DC 9VDC solenoid

TECHNICAL DATA

POWER SUPPLY	1 or 2 batteries or Solar Panel
SOLENOIDS	9 VDC
CABLE ON NODE 100 1.0MM ²	30m
SENSOR INPUT	1
OPERATING TEMPERATURE	-18°C to 60°C

WVC AND WVC WIRELESS CONTROLLERS

APPLICATIONS

- Residential, sites without mains power

FEATURES AND BENEFITS

Wireless remote programming

1, 2 and 4 stations fixed

Operates Hunter DC latching solenoids

3 independent programmes

9 start times per programme

4 hour maximum run time

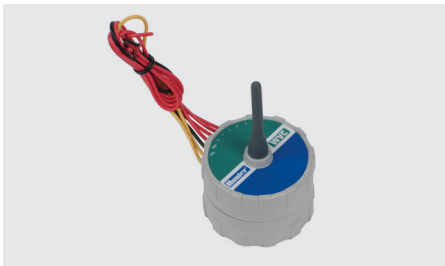
Battery life indicator

Optional Solar Panel kit

One touch manual start and advance

Submersible to 3 metres – IP68 rated (WVC)

2 year warranty



NETAFIM CODE		HUNTER CODE	DESCRIPTION
76800-900800	Z9024A	WVP	Wireless Valve Programmer
76800-900760	Z9024B	WVC100	Wireless Valve Controller 1 station
76800-900770	Z9024C	WVC200	Wireless Valve Controller 2 station
76800-906860	Z9064	458200	DC 9VDC solenoid

TECHNICAL DATA

POWER SUPPLY	1 x batteries
SOLENOIDS	9 VDC
MAX. CABLE ON SOLENOID RUN 1.0MM ²	30m
OPERATING FREQUENCY	869 MHz ISM band
SENSOR INPUT	1
OPERATING TEMPERATURE	-18°C to 60°C

SPORTS AND LANDSCAPE BATTERY POWERED CONTROLLERS

XC-HYBRID CONTROLLERS

APPLICATIONS

- Residential, sites without mains power

FEATURES AND BENEFITS

6 and 12 stations fixed

Operates Hunter DC latching solenoids

Indoor and outdoor enclosures

3 independent programmes

4 start times per programme

4 hour maximum run time

Optional Solar Panel kit

One touch manual start and advance

Programmable rain delay

Non-volatile memory

2 year warranty

Easy Retrieve™ memory

QuickCheck™

Solar-Sync® delay

Global seasonal adjustment

Automatic global adjustment with Solar-Sync®

Delay between stations

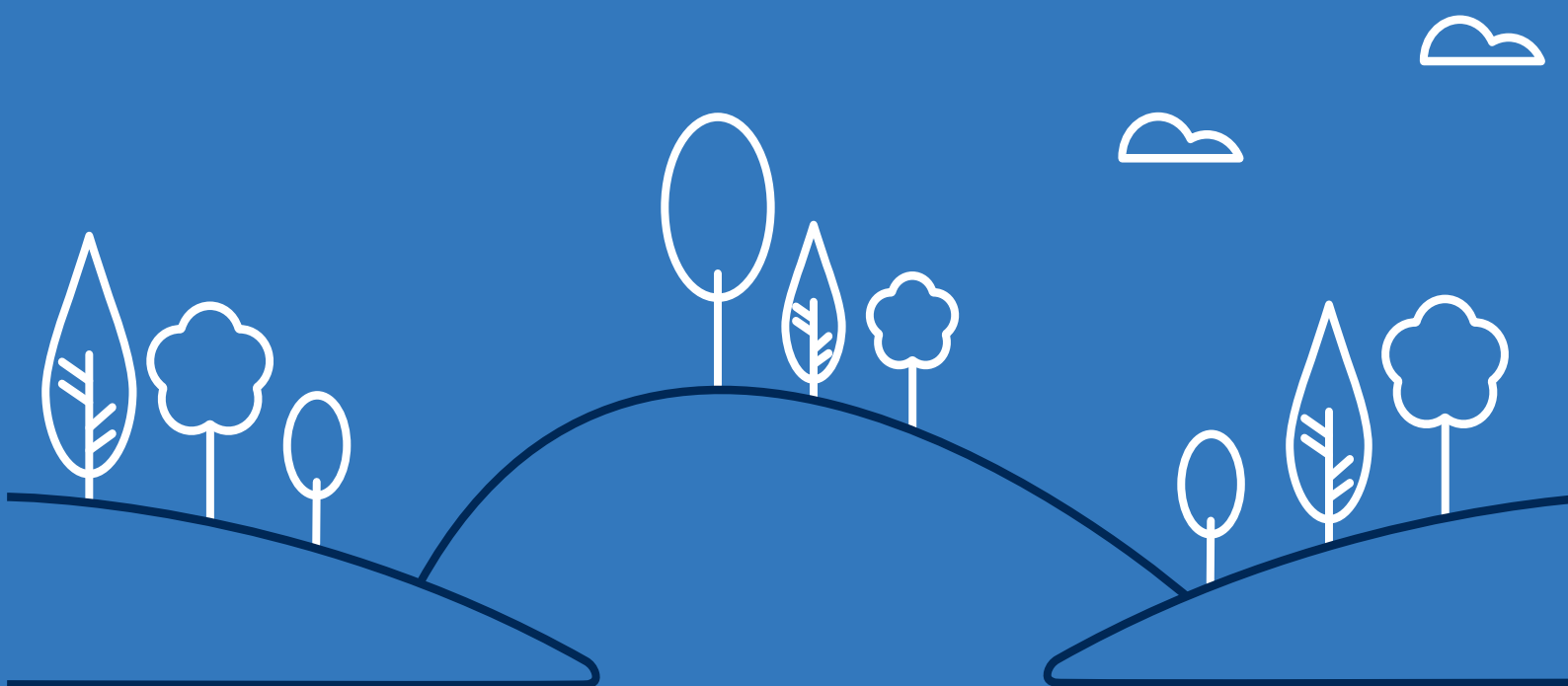
Sensor programmability

NETAFIM CODE		HUNTER CODE	DESCRIPTION
76800-900830	Z9027F	XCH600	X-CORE Hybrid DC battery controller 6 station - outdoor
76800-900820	Z9027B	XCH1200	X-CORE Hybrid DC battery controller 12 station - outdoor
76800-906860	Z9064	458200	DC 9VDC solenoid



TECHNICAL DATA

POWER SUPPLY	6 x AA batteries or Solar Panel
SOLENOIDS	9 VDC
MAX. CABLE RUNS	
1.0MM ²	150m
1.5MM ²	240m
2.0MM ²	395m
2.5MM ²	600m
SENSOR INPUT	1
OPERATING TEMPERATURE	-18°C to 60°C



SPORTS AND LANDSCAPE VALVES

PGV SERIES VALVES

APPLICATIONS

- Residential, sites without mains power

FEATURES AND BENEFITS

1", 1½" and 2"

Jar top and bolted models

External and internal manual bleed allows easy activation

Captive bonnet bolts

Low flow capability for use with drip systems

Encapsulated 24VAC solenoid with captive plunger

Accu Sync® pressure regulation option

NETAFIM CODE		HUNTER CODE	DESCRIPTION
76800-908060	Z9062	PGV101GB	PGV 1" valve with Flow Control
76800-907960	Z9062A	PGV100GB	PGV 1" valve without Flow Control
76800-908260	Z9063	PGV101JTGB	PGV 1" female Jar top with Flow Control
76800-907860	Z9061	PGV151B	PGV 1½" valve with Flow Control
76800-908160	Z9061A	PGV201B	PGV 2" valve with Flow Control
76800-904660	Z9063A	332100	PGV 1" diaphragm assembly
76800-904760	Z9063A	414100	PGV 1½" diaphragm assembly
76800-906860	Z9064	458200	DC 9VDC solenoid
76800-900200	Z9065	ACCUSYNCADJ	Valve adjustable pressure regulator



TECHNICAL DATA

FLOW		RECOMMENDED PRESSURE RANGE	SOLENOID	
			24VAC	
1½"	2"		Inrush current	Holding current
75.0 l.p.m. to 450.0 l.p.m./5.0m ³ /hr. to 27.0m ³ /hr.	75.0 l.p.m. to 570.0 l.p.m./5.0m ³ /hr. to 34.0m ³ /hr.	1.5 to 10.0 Bar	370mA	210mA

FLOW		PRESSURE LOSS			
l.p.m	m ³ /hr	Bar		Angle	
		Globe		Angle	
		1½"	2"	1½"	2"
75.00	4.5	0.2	0.1	0.2	0.1
95.00	5.5	0.2	0.1	0.2	0.1
115.00	6.5	0.2	0.1	0.2	0.1
135.00	8.0	0.2	0.1	0.2	0.1
150.00	9.0	0.2	0.1	0.2	0.1
200.00	11.0	0.3	0.1	0.2	0.1
325.00	13.5	0.3	0.1	0.3	0.1
400.00	18.0	0.4	0.2	0.4	0.1
500.00	22.5	0.6	0.3	0.5	0.2
625.00	27.0	0.8	0.4	0.8	0.3
775.00	30.5		0.6		0.5
	34.0		0.7		0.6

SPORTS AND LANDSCAPE VALVES

ICV SERIES VALVES

APPLICATIONS

- Commercial landscape, sports pitches and golf

FEATURES AND BENEFITS

1", 1½ and 2"

Glass filled nylon construction resulting in a 15 Bar pressure rating

Double beaded diaphragm assuring leak free performance

Fabric reinforced EPDM diaphragm and seat ensures greater performance in all conditions

External and internal manual bleed allows easy activation

Captive bonnet bolts

Low flow capability for use with drip systems

Encapsulated 24VAC solenoid with captive plunger

Accu Sync® pressure regulation option

Filter Sentry® option



NETAFIM CODE		HUNTER CODE	DESCRIPTION
76800-907560	Z9059	ICV101GB	ICV 1" valve with Flow Control
76800-907460	Z9060	ICV151GB	ICV 1½" valve with Flow Control
76800-907660	Z9060A	ICV201GB	ICV 2" valve with Flow Control
76800-907260	Z9060B	ICV201GBFS	ICV 2" valve with Flow Control and Sentry Filter
76800-901850	Z9060E	387800	ICV 1" diaphragm assembly
76800-901860	Z9060D	374500	ICV 1½"/2" diaphragm assembly
76800-900200	Z9065	ACCUSYNCADJ	Valve adjustable pressure regulator

TECHNICAL DATA

FLOW		RECOMMENDED PRESSURE RANGE	SOLENOID	
			24VAC	
1½"	2"		Inrush current	Holding current
75.0 l.p.m. to 568.0 l.p.m./5.0m³/hr. to 34.0m³/hr.	150.0 l.p.m. to 757.0 l.p.m./9.0m³/hr. to 45.0m³/hr.	1.5 to 15.0 Bar	370mA	210mA

FLOW		PRESSURE LOSS	
l.p.m	m³/hr	Bar	
		Globe	
		1½"	2"
75.00	4.5	0.1	
115.00	7.0	0.1	
150.00	9.0	0.1	0.1
190.00	11.0	0.2	0.1
225.00	13.5	0.2	0.1
280.00	17.0	0.3	0.1
340.00	20.5	0.4	0.2
380.00	23.0	0.5	0.3
450.00	27.0	0.7	0.4
510.00	30.5	0.9	0.5
565.00	34.0	1.2	0.6
660.00	40.0		0.9
750.00	45.0		0.9

SPORTS AND LANDSCAPE VALVES

QUICK COUPLING VALVES

NETAFIM CODE		HUNTER CODE	DESCRIPTION
76800-908460	Z9074A	HQ-5RC-BSP	Quick coupling valve 1" x 1"
76800-905060	Z9074B	HK-55	Quick coupler key 1"
76800-904960	Z9074C	HS 2B	Quick coupler hose swivel 1" x 1" BSP



ACCU SYNC® PRESSURE REGULATOR

APPLICATIONS

- Pressure regulation at the control valve location

FEATURES AND BENEFITS

Works with all Hunter valves

Adjustable model 1.4 Bar to 7.0 Bar



TECHNICAL DATA

STATIC PRESSURE	10.0 Bar
REGULATION	1.4 Bar to 7.0 Bar
REQUIRED DYNAMIC PRESSURE DIFFERENTIAL	1.0 Bar

SPORTS AND LANDSCAPE SENSORS

RAIN-CLIK®

APPLICATIONS

- Residential and commercial landscape, sports pitches

FEATURES AND BENEFITS

Quick Response™ feature shuts the system off as soon as it starts raining

Maintenance-free design with 10 year battery life for Wireless Rain-Clik

Adjustable vent ring allows for setting reset delay

Polycarbonate housing and metal extension arm

Compatible with most controllers

5 year warranty

10 year warranty on Wireless Rain Clik battery



NETAFIM CODE		HUNTER CODE
76800-900790	Z9007A	WR-RAIN CLIK

TECHNICAL DATA

WIRING	Normal open or normally closed
TIME TO TURN OFF IRRIGATION	2 to 5 minutes
TIME TO RESET QUICK RESPONSE	4 hours under dry, sunny conditions
TIME TO SET FROM FULLY WET	3 days approximately
SWITCH RATING	24VAC 3A
HARD WIRE CABLE LENGTH	7.6m 0.5mm ²
WIRELESS SYSTEM OPERATING FREQUENCY	433 MHz
MAXIMUM WIRELESS COMMUNICATION RANGE	240m line of sight
RECEIVER INPUT POWER	24 VAC from controller

SPORTS AND LANDSCAPE SENSORS

MINI-CLIK®

APPLICATIONS

- Residential and commercial landscape, sports pitches

FEATURES AND BENEFITS

Can be used with any automatic irrigation system

Debris tolerant for reliable operation

Can be set to turn off system from 3mm to 19mm of rainfall

Optional user-installed metal gutter mount

5 year warranty



NETAFIM CODE		HUNTER CODE
76800-905860	Z9007	MINI-CLIK

TECHNICAL DATA

SWITCH RATING	24VAC 3A
HARD WIRE CABLE LENGTH	7.6m 0.5mm ²

SOIL-CLIK®

APPLICATIONS

- Residential and commercial landscape, sports pitches

FEATURES AND BENEFITS

Provides soil moisture level and status

Shuts down irrigation when required soil moisture level is reached

One touch override allows sensor bypass

Low voltage outdoor enclosure

Powered from host controller

Connects to any Hunter sensor output

Can be wired to interrupt 24VAC common wires on virtually any irrigation system

Can work alongside Solar Sync®

Can be used with X-Core®, Pro-C®, ICC2, I-Core®, ACC and ACC2 Clik sensor inputs

NETAFIM CODE		HUNTER CODE
76800-905960	Z9007B	SOIL-CLIK

TECHNICAL DATA

MODULE LEADS	80cm
PROBE LEADS – 1.0MM ²	80cm
MAX. DISTANCE	
CONTROL MODULE TO CONTROLLER	2m
CONTROL MODULE TO SENSOR PROBE	300m
INPUT POWER	24VAC 100mA max
OUTPUT	Normally closed dry contact closure
PROBE DEPTH	
TURF	150mm
TREES AND SHRUBS	Match to root zone

SPORTS AND LANDSCAPE SENSORS

FREEZE-CLIK®

APPLICATIONS

- Residential and commercial landscape, sports pitches

FEATURES AND BENEFITS

Freeze sensor

Accurate temperature sensing shuts system down when air temperature drops to 3°C

Can be used with other sensors to enhance overall irrigation system efficiency

5 year warranty



NETAFIM CODE		HUNTER CODE
76800-905760	Z9009	FREEZE CLIK



TECHNICAL DATA

SWITCH RATING

24VAC 5A



SPORTS AND LANDSCAPE SENSORS

SOLAR-SYNC®

APPLICATIONS

- All landscape systems

FEATURES AND BENEFITS

Provides automatic daily weather adjustment to programme run times

Wired and wireless models

Rain and freeze shut off

Gutter mounted bracket included

5 year warranty

10 year warranty on the battery in wireless models



NETAFIM CODE		HUNTER CODE	DESCRIPTION
76800-906460	Z9008C	SOLARSYNC	Solar Sync Kit for ACC2, ICC2, I-Core, PRO-C 4 & X-Core
76800-906660	Z9008D	WSS-SEM	Wireless Solar Sync Kit for ACC2, ICC2, I-Core, PRO-C 4 & X-Core

TECHNICAL DATA

CODE	MODEL	CONNECTION	COMPATIBLE CONTROLLERS
76800-906460	SOLAR-SYNC SEN	Hardwire	ACC, ACC2, I-CORE, new Pro-C 400, new PCC, X-Core, ICC2
76800-906660	WSS-SEN	Wireless	As above
76800-906360	SOLAR-SYNC	Hardwire	Older Pro-C and PCC only
76800-906560	WSS	Wireless	As above

MAX. DISTANCE SENSOR TO CONTROLLER

Hardwired	Wireless	Wire included with hardwire models
60m	240m	12m

FLOW-CLIK®

APPLICATIONS

- All systems using Hunter and some non-Hunter controllers

FEATURES AND BENEFITS

Automatically shuts down if high flow condition occurs

One button calibration

Multi-colour LED provides clear system status

5 year warranty



NETAFIM CODE		HUNTER CODE
76800-902460	Z9009A	FLOWCLIK

TECHNICAL DATA

INTERFACE PANEL LEADS	90cm
CURRENT DRAW	24VAC 0.025A
SWITCHING CURRENT	2.0A max.
MAX. DISTANCE	
INTERFACE MODULE TO SENSOR	2 core, 1.0mm ² or greater, marked for polarity
PROGRAMMABLE START UP DELAY	0 to 300 seconds
PROGRAMMABLE INTERRUPT PERIOD	2 to 60 minutes

	MINIMUM		RECOMMENDED MAXIMUM	
	l.p.m	m ³ /hour	l.p.m	m ³ /hour
1"/25mm	7.6	0.45	64.00	3.8
1½"/40mm	19.0	1.14	132.00	8.0
2"/50mm	37.8	2.26	208.00	12.5
3"/75mm	106.00	6.36	450.00	27.0
4"/100mm	129.00	7.74	750.00	45.0

DRIP IRRIGATION

LANDSCAPE DRIPLINE

TECHNET™, UNITECHLINE™ AND TECHLINE™

PREMIUM LANDSCAPE DRIPPERLINE INCORPORATING IN-LINE, PRESSURE-COMPENSATING & CONTINUOUSLY SELF-CLEANING DRIPPERSELF-CLEANING DRIPPER

FEATURES & BENEFITS:

Specifically designed for landscape applications, this premium dripperline is available in dark brown as specified by landscape designers and architects.

Pressure compensated to ensure precise and equal amounts of water are delivered over a wide pressure range resulting in 100% uniformity of water and nutrient distribution along the laterals.

Double TurboNet™ labyrinth assures wide water passages and the large deep and wide cross section improves clogging resistance.

Continuously self-flushing system with wide filtration area flushes debris as it is detected throughout operation even when using low quality water.

Design of the dripper draws the water from the stream centre preventing the entrance of sediments into the dripper.

Physical root barrier provides the ultimate protection against root intrusion without reliance on chemicals.

Injected dripper manufactured with a very low Coefficient of Variation resulting in consistent quality and uniform application.

High quality injected silicon diaphragm resulting in optimum flow control.

UNIRAM™ dripperlines meet ISO 9261 Standards with production certified by the Israel Standards Institute (SII).

Available from UK stock in 1.2mm wall thickness. Other variants available on request.

High UV resistance and resistant to standard nutrients used in agricultural.

UNIRAM™ DRIPPERLINES ARE AVAILABLE IN FIVE TECHNOLOGY VARIANTS TO BE SELECTED BASED UPON THE SPECIFIC APPLICATION:

- AS** Pressure compensated dripper with anti-syphon mechanism preventing ingress of contaminants
- CV** Pressure compensated dripper with non-leakage functionality facilitating pulse irrigation
- AS XR** AS dripper with integrated copper oxide anti-root intrusion system



TECHLINE™ CV 16MM X 1.2MM 0175

APPLICATIONS

- On and sub surface, slopes, roof gardens, planters

SPECIFICATION

- Continuously self cleaning
- Pressure compensating
- Anti-syphon
- Anti-drain

NETAFIM CODE		DESCRIPTION		
14705-003300	Z4708	2.3 lph @ 30cm	100m	●

UNITECHLINE™ AS 16MM X 1.2MM 0175

APPLICATIONS

- On and sub surface, slopes, roof gardens, planters

SPECIFICATION

- Continuously self cleaning
- Pressure compensating
- Anti-syphon

NETAFIM CODE		DESCRIPTION		
14690-002500	Z4713	1.6 lph @ 30cm	100m	●
14690-003500	Z4714	2.3 lph @ 30cm	100m	●
14690-003800	Z4716	2.3 lph @ 50cm	100m	●

TECHNETM AS 16MM X 1.0MM 0175

APPLICATIONS

- On surface, or under mulch, sub surface, roof gardens, planters

SPECIFICATION

- Continuously self cleaning
- Pressure compensating
- Anti-syphon

NETAFIM CODE		DESCRIPTION		
17679-004380	Z4702	1.6 lph @ 30cm	25m	●
17679-004400	Z4700	1.6 lph @ 30cm	100m	●
17679-004600	Z4703	1.6 lph @ 50cm	100m	●

UNITECHLINE™ AS XR

UNITECHLINE™ AS XR 16MM X 1.2MM 0175

APPLICATIONS

- On and sub surface, slopes, roof gardens, planters

SPECIFICATION

- Continuously self cleaning
- Pressure compensating
- Anti-syphon
- Additional root intrusion protection

NETAFIM CODE		DESCRIPTION		
		2.3 lph @ 30cm	100m	●

TECHNICAL DATA

TECHLINE™ CV

FLOW RATE* (L/H)	WORKING PRESSURE RANGE (BAR)	RECOMMENDED FILTRATION (MICRON) / (MESH)
2.3	1.0 - 4.0	200/90

*Within working pressure range

UNITECHLINE™ AS

FLOW RATE* (L/H)	WORKING PRESSURE RANGE (BAR)	RECOMMENDED FILTRATION (MICRON) / (MESH)
1.6	0.5 - 4.0	200/90
2.3	0.5 - 4.0	200/90

*Within working pressure range

TECHNET™ AS

FLOW RATE* (L/H)	WORKING PRESSURE RANGE (BAR)
1.6	0.5 - 4.0

*Within working pressure range

*Recommended filtration 130 micron / 120 mesh

TECHLINE™ CV

MODEL	INSIDE DIAMETER (MM)	WALL THICKNESS (MM)	OUTSIDE DIAMETER (MM)	MAX. WORKING PRESSURE (BAR)
16012	14.20	1.20	16.60	4.0

TECHLINE™ CV

MODEL	INSIDE DIAMETER (MM)	WALL THICKNESS (MM)	OUTSIDE DIAMETER (MM)	MAX. WORKING PRESSURE (BAR)
16012	14.20	1.20	16.60	4.0

TECHNET™ AS

MODEL	INSIDE DIAMETER (MM)	WALL THICKNESS (MM)	OUTSIDE DIAMETER (MM)	MAX. WORKING PRESSURE (BAR)
16100	14.20	1.00	16.20	3.5



SPORTS AND LANDSCAPE

VALVE BOXES

DURA VALVE BOXES		NETAFIM CODE	DESCRIPTION
02312-851330	Z8350C	Dura 6" round	
02312-851332	Z8350D	Dura 10" round	
02312-851334	Z8350E	Dura Standard	
02312-851336	Z8350F	Dura Jumbo	

CARSON VALVE BOXES		NETAFIM CODE	DESCRIPTION
02312-002010	Z8345	Carson 6" round	
02312-002040	Z8346	Carson 10" round	
02312-002050	Z8347	Carson Standard	
02312-002090	Z8348	Carson Jumbo	

CARSON VALVE BOX LIDS		NETAFIM CODE	DESCRIPTION
02312-002110	Z8349	Carson 6" round – Lid only	
02312-002140	Z8350	Carson 10" round – Lid only	
02312-002150	Z8350A	Carson Standard – Lid only	
02312-002190	Z8350B	Carson Jumbo – Lid only	

Irrigation Design and Sales Limited

10 Bay Close

Three Legged Cross

Wimborne

Dorset

BH21 6SW

Tel/Fax : 01202 825174

Mobile : 07850 327994 (Wim van Varik)

