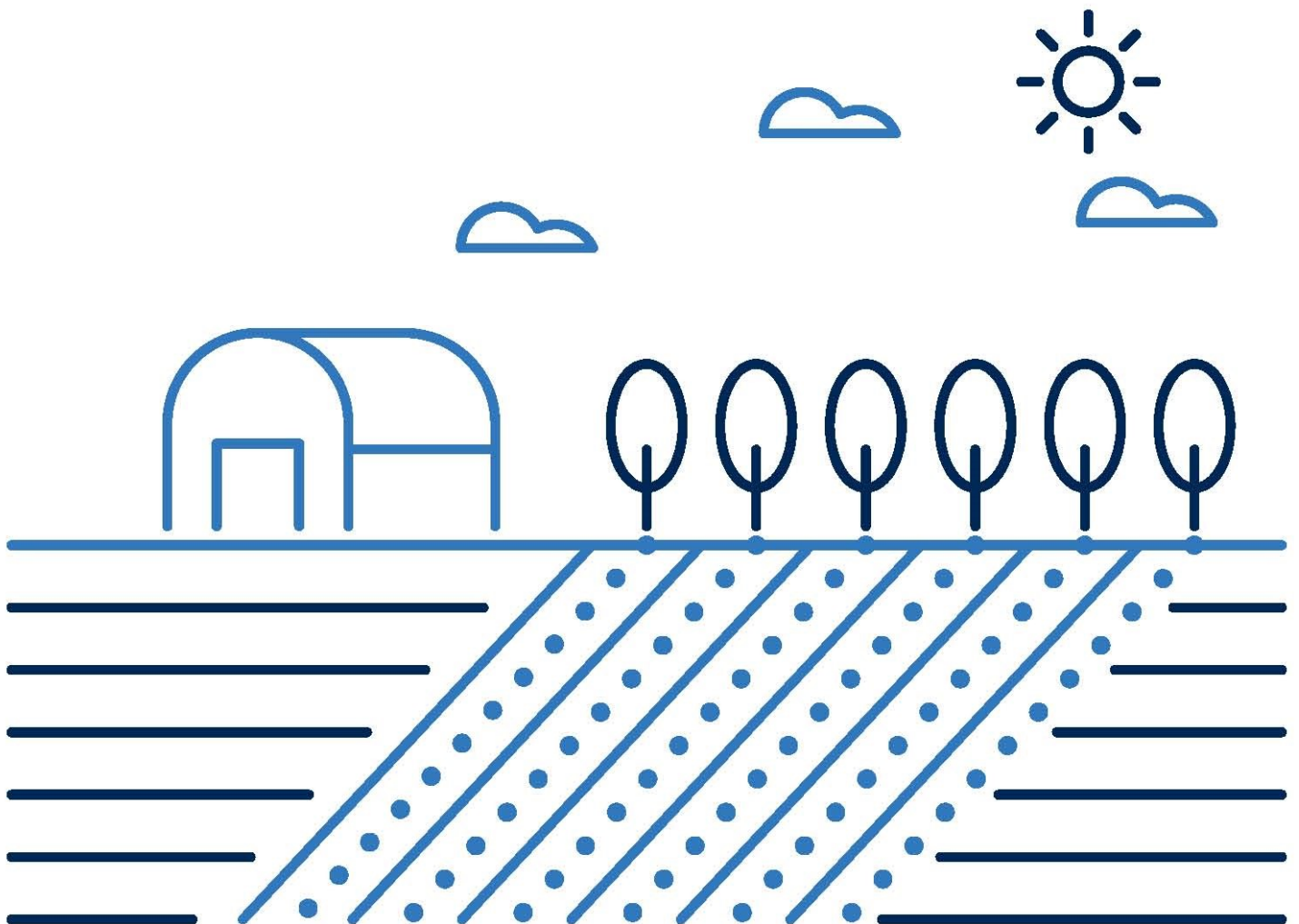


**2019/20**

# Sprinklers Catalogue



# SPRINKLERS

## Netafim Micronet Sprinklers

### INTRODUCTION

#### NETAFIM IS THE PIONEER AND GLOBAL LEADER IN BOTH DRIP AND MICRO IRRIGATION SOLUTIONS

Having established and maintained our position as the world's leading drip irrigation company, Netafim has also developed a range of micro-sprinklers for a wide range of applications.

From greenhouses to open fields to landscaped areas, Netafim sprinklers continue to reinforce the company's position as the leader in irrigation innovation. This is achieved using the same high levels of design, manufacture and testing as have been applied to our ground-breaking drip irrigation products.

### CONTENTS

SpinNet™	2
VibroNet™	2
Anti drain valves, droppers and base connectors	6
CoolNet™	7
Pulsar™	8
GyroNet™	10
SuperNet™	12
SpinNet™ Dropper and CoolNet™ spares	15
Sprinklers for landscape	16
MegaNet™	18
D-Net™	21
Sprinkler stands	24
Dutch sprinklers	25

### KEY

- Item carried in the Netafim UK warehouse
- Item available from other Netafim facilities

# SPRINKLERS

## SPINNET™ & VIBRONET™

### SPINNET™ & SPINNET™ SD

#### BRIDGELESS MICRO SPRINKLER AND BRIDGELESS MICRO SPRINKLER WITH SHOULDER DISTRIBUTION

##### FEATURES & BENEFITS:

Bridgeless design eliminates dripping preventing damage to crops.

Interchangeable components allowing tool less assembly and disassembly.

Acid resistant raw materials allowing application chemicals to pass through the system and also allowing suitable cleaning treatments to be used within the system.

Colour coded nozzles for easy identification.

#### SPINNET™ AND SPINNET™ SD MICRO SPRINKLERS ARE AVAILABLE IN TWO CONFIGURATIONS AND THREE TRAJECTORY OPTIONS:

- SD** Shoulder distribution providing excellent uniformity of distribution on single row systems and are specifically designed for full cover rectangular areas with a high percentage of water falling within the required rectangular area
- LR** High trajectory with green rotor
- FLT** Flat trajectory with grey rotor
- SR** Low trajectory with blue rotor

### VIBRONET™

#### BRIDGELESS MICRO EMITTER WITH VIBRATING ACTION

##### FEATURES & BENEFITS:

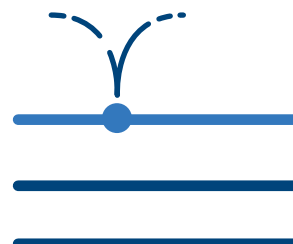
Excellent uniform distribution on a full coverage irrigation system

Water passes through the nozzle causing a needle to vibrate breaking up the water jet to produce uniform droplets for more even distribution

Constantly self cleaning preventing the build up of mineral deposits

Made of plastic materials that are resistance to all agrochemicals and weather conditions

It is recommended that the emitter is connected to the pipe using a super soft PE microtube, weight and anti-drain valve



# SPRINKLERS

## SPINNET™ & VIBRONET™

### SPINNET™ HEAD ONLY 0205

#### APPLICATIONS

- Greenhouses, nurseries and net-houses



CODE		DESCRIPTION	
64200-005000	Z3603	70 lph, Swivel - Grey	●
64200-007500	Z3611	160 lph, Swivel - Grey	●
64200-008000	Z3612	200 lph, Swivel - Grey	●
64200-024000	Z3638	70 lph, Swivel - Blue	●
64200-025000	Z3639	90 lph, Swivel - Blue	●
64200-026000	Z3640	120 lph, Swivel - Blue	●
64200-028000		200 lph, Swivel - Yellow	●

### SPINNET™ SD HEAD ONLY 0205

#### APPLICATIONS

- Greenhouses, nurseries and polytunnels



CODE		DESCRIPTION	
64200-001460	Z3622	160/70 lph, Flat - Brown & Red	●
64200-001600	Z3621	160/90 lph, Flat - Brown & Brown	●
64200-010750	Z3625	120/70 lph, Swivel - Green	●
64200-013950	Z3607A	160/90 lph, Swivel - Green	●
64200-014090	Z3645	200/90 lph, Swivel - Green	●
64200-031950	Z3641	90/50 lph, Swivel - Blue	●
64200-032000	Z3642	120/70 lph, Swivel - Blue	●
64200-033000	Z3643	160/90 lph, Swivel - Blue	●
64200-034000	Z3644	200/120lph, Swivel - Blue	●

### VIBRONET™ 0205



CODE		DESCRIPTION	
64300-001000	Z3626	40 lph, Head only - Blue	●
64300-005000	Z3627	50 lph, Head only - Green	●



# SPRINKLERS

## SPINNET™ & VIBRONET™

### TECHNICAL DATA

SPINNET™						
				LR	FLT	SR
MODEL	NOZZLE CODE COLOUR	NOZZLE SIZE (MM)	RECOMMENDED WORKING PRESSURE (BAR)	WETTED DIAMETER (M)**	WETTED DIAMETER (M)**	WETTED DIAMETER (M)**
050	Green	0.90	2.0 to 3.0	N/A	N/A	6.0
070	Black	1.07	2.0 to 3.0	8.0	7.5	6.5
090	Orange	1.22	2.0 to 3.0	8.5	8.5	6.5
120	Red	1.44	2.0 to 3.0	8.5	8.5	6.5
160	Brown	1.76	2.0 to 3.0	9.0	9.0	6.5
200	Yellow	1.96	2.0 to 3.0	9.5	9.0	7.0

\*\*The wetted area was measured at 1.5 metres height and at working pressure of 2.5 bar

SPINNET™ SD								
						LR	FLT	SR
MODEL	NOZZLE CODE COLOUR	NOZZLE SIZE (MM)	NOMINAL FLOW RATE* (L/H)	SD CONN NOZZLE SIZE (MM)	RECOMMENDED WORKING PRESSURE (BAR)	WETTED DIAMETER (M)**	WETTED DIAMETER (M)**	WETTED DIAMETER (M)**
090/050	Orange + Orange	1.22	52	1.20	2.0 to 3.0	N/A	N/A	5.5
120/070	Red + Red	1.44	68	1.46	2.0 to 3.0	7.5	7.5	6.0
160/070	Brown + Red	1.76	79	1.46	2.0 to 3.0	6.5	6.0	5.5
160/090	Brown + Brown	1.76	88	1.56	2.0 to 3.0	7.0	6.5	5.5
200/090	Yellow + Brown	1.86	92	1.56	2.0 to 3.0	6.5	6.5	5.5
200/120	Yellow + Yellow	1.86	123	1.87	2.0 to 3.0	8.0	7.5	6.5

\*\*The wetted area was measured at 1.5 metres height and at working pressure of 2.5 bar

Push fit connection

Recommended filtration 130µm/120mesh

VIBRONET™						
MODEL	FLOW RATE (L/H)*	NOZZLE CODE COLOR	PIN CODE COLOR	NOZZLE WATER PASSAGES AREA (MM <sup>2</sup> )	RECOMMENDED WORKING PRESSURE (BAR)	WETTED DIAMETER 150 CM ABOVE GROUND* (M)
040	40.0	Blue	Grey	0.60	3.0	4.0
050	47.0	Green	Grey	0.71	3.0	4.0

\*at 3.0 bar working pressure

Push fit connection

Recommended filtration 130µm/120 mesh

# SPRINKLERS

## SPINNET™ & VIBRONET™

### SPINNET™ SD EMITTER – SPRINKLER SPACING SUGGESTIONS FOR IRRIGATION OF POLYTUNNELS AND TARGETED GREENHOUSE BAYS

TARGET WIDTH (M)	HEIGHT ABOVE TARGET (M)	SPACING BETWEEN SPRINKLERS (M)	SPACING BETWEEN LATERALS (M)	NO OF LINES PER TARGET WIDTH	MODEL	WORKING PRESSURE	NOZZLE CONFIGURATION	ACTUAL FLOW RATE (L/H)	SC (5%)	PRECIPITATION (MM)	% IN STRIP	SPRINKLER HEAD PART NO.
3	1.8	1	—	1	SR	2.5	120/070	76	1	14.9	59%	64200-032000
3.5	1.8	1	—	1	SR	2.5	120/070	76	1	14.8	68%	64200-032000
4	1.8	1	—	1	SR	2.5	120/070	76	1.1	14.5	76%	64200-032000
4.5	1.8	1	—	1	LR	2.5	160/090	102	1.1	13.0	57%	64200-013950
5	1.8	1	—	1	LR	2.5	160/090	102	1.1	13.1	64%	64200-013950
5.5	1.8	1	—	1	LR	2.5	160/090	102	1.1	13.2	71%	64200-013950
6	1.8	1	—	1	LR	2.5	160/090	102	1.1	13.3	78%	64200-013950
6.5	1.8	1	—	1	LR	2.5	200/120	137.5	1.1	17.1	81%	64200-014720
7	1.8	1	—	1	LR	2.5	200/120	137.5	1.1	16.8	86%	64200-014720
8	1.8	1	4.5	2	SR	2.5	120/70	76	1	15.1	79%	64200-032000
9	1.8	1	5	2	SR	2.5	160/90	102	1.1	18.2	81%	64200-033000

### SPINNET™ SD SPRINKLER SPACING SUGGESTIONS FOR TRADITIONAL GLASSHOUSE/MULTI-BAY TUNNEL IRRIGATION

BAY WIDTH (M)	HEIGHT ABOVE TARGET (M)	SPACING BETWEEN SPRINKLERS (M)	SPACING BETWEEN LATERALS (M)	MODEL	WORKING PRESSURE	NOZZLE CONFIGURATION	ACTUAL FLOW RATE (L/H)	SC(5%)	PRECIPITATION (MM)	SPRINKLER HEAD PART NO.
3.2	1.5	1.0	3.2	SR	2.5	90	94.5	1.1	29.6	64200-025000
3.2	1.5	1.5	3.2	FLT	2.5	120	125.0	1.1	26.0	64200-007000
3.2	1.8	1.0	3.2	SR	2.5	90	94.5	1.1	29.6	64200-025000
3.2	1.8	1.5	3.2	FLT	2.5	120	125.0	1.1	26.3	64200-007000
4.0	1.5	1.0	4.0	FLT	2.5	120	125.0	1.1	31.2	64200-007000
4.0	1.5	1.5	4.0	FLT	2.5	120	125.0	1.1	20.8	64200-007000
4.0	1.8	1.0	4.0	SR	2.5	120	125.0	1.0	28.3	64200-026000
4.0	1.8	1.5	4.0	FLT	2.5	120	125.0	1.1	21.0	64200-007000

For other widths, heights, pressures or any detail not shown above please call Netafim Product Support

# SPRINKLERS

## ANTI-DRAIN VALVES, DROPPERS & CONNECTORS

### ANTI-DRAIN VALVE 0205



CODE		DESCRIPTION	
63000-002980		1.5 Bar/0.7 Bar M/F - Blue Pin	●
63000-003000	Z3631A	2.0 Bar/0.7 Bar M/F - Purple Pin	●
63000-003100	Z3632	3.0 Bar/1.5 Bar M/F - Green Pin	●
63000-003200	Z3633	4.0 Bar/1.8 Bar M/F - Orange Pin	●

### SSPE DROPPERS M-F 0205



CODE		DESCRIPTION	
63000-003550	Z3634	15cm	●
63000-003820	Z3635	30cm	●
63000-004320	Z3636	46cm	●
63000-005620	Z3637	60cm	●
63000-006920	Z3658	90cm	●

### BASE CONNECTORS 0205



IMAGE	CODE	DESCRIPTION	
1	63000-001950	4/7 Barb x Female	●
2	63000-002060	4/7 Barb x Male	●
3	63000-002120	3/8ww x Female Connector - Grey	●
4	63000-002170	M11 x Female Connector - Grey	●
5	63000-002510	Female/Female Adaptor to "DAN" Stands - Blue	●

# SPRINKLERS

## COOLNET™ PRO

### COOLNET™ PRO

#### SUPER FINE MISTER

#### FEATURES & BENEFITS:

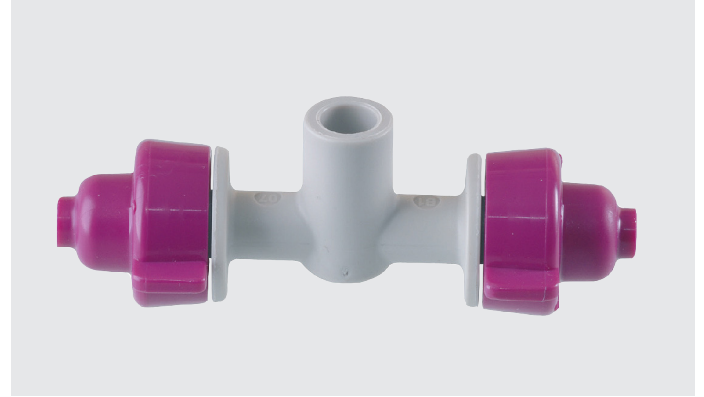
Bridgeless design eliminates dripping preventing damage to crops.

Interchangeable components reduce inventory and spares stocking levels.

Acid resistant raw materials allowing application chemicals to pass through the system and also allowing suitable cleaning treatments to be used within the system.

Colour coded nozzles for easy identification.

Micro droplets at a relatively low pressure creating uniform distribution at an average droplet size of 65 microns.



COOLNET™ PRO		0205	CODE	DESCRIPTION		
<b>COOLNET™ PRO MISTERS ARE AVAILABLE IN TWO CONFIGURATIONS</b>						
<ul style="list-style-type: none"> <li>• Cross with four nozzles</li> <li>• Tee with two nozzles</li> </ul>						
<b>APPLICATIONS</b>						
<ul style="list-style-type: none"> <li>• Cooling of greenhouses and irrigation above rooting tables</li> </ul>						
			<b>63100-018800</b>	Z3656	2 x 5.5 lph +M - Light Green	●
			<b>63100-052000</b>	Z3654A	4 x 5.5 lph +M - Light Green	●
			<b>63100-058300</b>	Z3651A	4 x 7.5 lph +M - Silver Grey	●
			<b>63100-055980</b>		4 x 14.0 lph +M - Sky Blue	●

## TECHNICAL DATA

COOLNET™ PRO			
MODEL	NOZZLE CODE COLOUR	NOZZLE SIZE (MM)	RECOMMENDED WORKING PRESSURE (BAR)
055	Light Green	0.51	4.0 to 5.0
075	Silver Grey	0.61	4.0 to 5.0
140	Sky Blue	0.88	4.0 to 5.0
	Orange	Plugged	

Push fit connection

It is recommended that a SSPE dropper with Anti-Drain valve is used with the CoolNet™ Pro

Recommended filtration 130µm/120mesh

# SPRINKLERS

## PULSAR™

### PULSAR™

#### PRESSURE COMPENSATED EMITTER

##### FEATURES & BENEFITS:

Pressure compensated to ensure precise and equal amounts of water are delivered over a broad pressure range resulting in 100% uniformity of water distribution along the laterals.

Pulses several times per minute to ensure continuous irrigation over a large area for long periods.

Unique regulation mechanism makes it particularly suitable for hillside and long row applications.

The low precipitation rates mean that soil saturation and run-off are avoided even after long periods of irrigation.

The low flows mean that the supply system including pumping, filtration and distribution pipes and valves are small compared to higher flow system resulting in lower capital and operating costs.

The Pulsar™ micro-sprinkler uses plastic parts resistant to standard nutrients used in agriculture.

Can be mounted on both metal and wooden stakes allowing integration with the crop growing system.

#### PULSAR™ SPRINKLERS ARE AVAILABLE IN THREE TECHNOLOGY VARIANTS TO BE SELECTED BASED UPON THE SPECIFIC APPLICATION:

##### Pulsar™ with MistNet™ Head

For cooling and humidification of tree and trellised trained woody shrubs

##### Pulsar™ with GyroNet™ Head

For cooling and frost protection

##### Pulsar™ with StripNet™ Head

With a narrow rectangular distribution pattern for strip frost protection in vineyards and cooling of trellised crops. Uses less than 70% of the water required for full coverage systems



PULSAR™ WITH STRIPNET™ HEAD		0205	CODE	DESCRIPTION	
APPLICATIONS			63700-005000	12 lph, Upright, Anti-drain valve - Brown	●

##### APPLICATIONS

- Strip frost protection in vineyards
- Cooling of trellised crops

PULSAR™ WITH MISTNET™ HEAD		0205	CODE	DESCRIPTION	
APPLICATIONS			63700-006000	12 lph, Upright, Anti-drain - valve, 120cm microtube - Brown	●

##### APPLICATIONS

- Cooling and humidification of orchards

PULSAR™ WITH GYRONET™ HEAD		0205	CODE	DESCRIPTION	
APPLICATIONS			63700-008200	20 lph, SSR Swivel, Anti-drain valve, 120cm microtube - Yellow	●
			63700-010500	12 lph, SS Swivel, Short Range, Anti-drain valve, 60cm microtube - Red	●

##### APPLICATIONS

- Frost protection in orchards
- Cooling of orchards



SPRINKLER ACCESSORIES		0225	CODE	DESCRIPTION	
			63520-005950	Z3728 Adaptor to metal/fibreglass 6mm rods	●
			63520-005970	Z3729 Adaptor to metal/fibreglass 8mm rods	●





### TECHNICAL DATA

#### PULSAR™ WITH STRIPNET™ HEAD

MODEL	FLOW RATE (L/H)*	CODE COLOUR	NOZZLE WATER PASSAGE AREA (MM²)	RECOMMENDED WORKING PRESSURE (BAR)	WETTED AREA (M X M)	ACTIVE NOZZLE CODE COLOUR
30	31	Brown	0.83	2.0 - 4.0	0.5 x 5.5	Brown

\*\*Within working pressure range

Barbed connection

Recommended filtration 130µm/120mesh

#### PULSAR™ WITH MISTNET™ HEAD

MODEL	NOZZLE CODE COLOUR	NOZZLE SIZE DIA. (MM)	RECOMMENDED WORKING PRESSURE (BAR)
025	Brown	1.30	3.0

\*\*Within working pressure range

Barbed connection

Recommended filtration 130µm/120mesh

#### PULSAR™ WITH GYRONET™ HEAD

MODEL	NOZZLE CODE COLOUR	NOZZLE SIZE (MM)	MAXIMUM WORKING PRESSURE (BAR)	WETTED DIAMETER (M)		SWIVEL (ROTOR) LR 20CM ABOVE CODE COLOUR
				LR 20CM ABOVE GROUND	LRD 20CM ABOVE GROUND	
120	Red	1.57	2.5	8.0	2.0	Black
200	Yellow	2.04	2.5	9.5	N/A	Grey

\*\*Within working pressure range

Barbed connection

Recommended filtration 130µm/120mesh

# SPRINKLERS

## GYRONET™

### GYRONET™ LR, GYRONET™ UD AND GYRONET™ TURBO

#### LONG RANGE REVOLVING AND LONG RANGE REVOLVING WITH DEFLECTOR

##### FEATURES & BENEFITS:

Anti-insect mechanism prevents insects entering the micro-nozzle position.

The materials used to manufacture the GyroNet™ are resistant to all agrochemicals and weather conditions.

Simple modular parts provide high levels of reliability and make servicing simple.

#### THE GYRONET™ IS AVAILABLE IN A RANGE OF TECHNOLOGY VARIANTS TO BE SELECTED BASED ON SPECIFIC REQUIREMENTS:

**LR** Revolving rotor for long range

**UD** Upside down rotor

**TURBO** Uniquely designed rotor for added very high levels of water distribution uniformity

#### GYRONET™ LR 0215

##### APPLICATIONS

- Irrigation of orchards and tree plantations with large root volumes



CODE	DESCRIPTION	
64000-020300	Standard bearing 40 lph, head only - Blue	●
64000-021560	Standard bearing 58 lph, head only - Grey	●

#### GYRONET™ UD 0215

##### APPLICATIONS

- Systems requiring inverted sprinklers mounted above the crop



CODE	DESCRIPTION	
64000-093020	70 lph, head only - Black	●
64000-093040	70 lph, head only - Black, bag of 100	●

#### GYRONET™ TURBO 0215

##### APPLICATIONS

- Closed and open-air nurseries
- Intensive field crops
- Overhead cooling
- Roof and tunnel cooling and dust cleaning



CODE	DESCRIPTION	
64100-002040	200 lph, head only, 1/2" inlet - Yellow	●
64000-093040	200 lph, head only, 1/2" inlet - Yellow, bag of 100	●

### TECHNICAL DATA

GYRONET™ LR						
MODEL	NOZZLE CODE COLOUR	NOZZLE SIZE (MM)	MAXIMUM WORKING PRESSURE (BAR)	WETTED DIAMETER (M)		SWIVEL (ROTOR) LR 20CM ABOVE CODE COLOUR
				LR 20CM ABOVE GROUND	LRD 20CM ABOVE GROUND	
040	Blue	0.90	2.5	5.5	1.5	Purple
058	Grey	1.10	2.5	7.0	1.5	Black

Push fit connection

Recommended filtration 200µm/80mesh

GYRONET™ UD						
MODEL	NOZZLE CODE COLOUR	NOZZLE SIZE (MM)	MAXIMUM WORKING PRESSURE (BAR)	WETTED DIAMETER (M)		SWIVEL (ROTOR) LR 20CM ABOVE CODE COLOUR
				UD 50CM ABOVE GROUND		
070	Black	1.20	2.5	7.0		Green

Push fit connection

Recommended filtration 200µm/80mesh

GYRONET™ TURBO					PRECIPITATION (MM/H)				
PERFORMANCE TABLE					SPACING (M X M)				
NOZZLE SIZE (MM)	CODE COLOUR	WORKING PRESSURE (BAR)	FLOW RATE (L/H)	WETTED DIAMETER (M)	4 x 6	5 x 6	7 x 6	7 x 6	7 x 7
					1.99	Yellow	2.0	190	9.5
2.5	213	10.0	9.0	7.2			6.0	5.1	4.4
3.5	213	10.0	9.9	7.8			6.5	5.6	4.8

\*at least 0.5 mm/h

\*\*Performance table prepared under laboratory conditions, sprinkler head 1.0 metre above ground

CU = or > than 92%	CU = or > 88% and < 92%	CU = or > 96% and < 88%	CU < 86%
--------------------	-------------------------	-------------------------	----------

1/2" threaded connection

Recommended filtration 200µm/80mesh



# SPRINKLERS

## SUPERNET™



### SUPERNET™ SR, SUPERNET™SRD AND SUPERNET™ JET

#### MEDIUM RANGE ROTOR AND MEDIUM RANGE ROTOR WITH DEFLECTOR

##### FEATURES & BENEFITS:

Unique regulating mechanism ensures even water and nutrient to each tree and that distribution is uniform and wetted diameter constant regardless of inlet pressure.

Anti-insect mechanism prevents insects entering the micro-nozzle position.

The design of the emitter creates outstanding uniformity of distribution on a full coverage system.

The emitter is constantly self-cleaning as the vibrating system prevents the build-up of mineral deposits in the nozzle.

The materials used to manufacture the SuperNet™ and SuperNet™ SRD are resistant to all agrochemicals and weather conditions.

SuperNet™ rotors meet ISO 8026 Standards with production certified by the Israel Standards Institute (SII).



#### THE SUPERNET™ IS AVAILABLE IN A RANGE OF TECHNOLOGY VARIANTS TO BE SELECTED BASED ON SPECIFIC REQUIREMENTS:

- SR** Revolving rotor
- SRD** Revolving rotor with stream deflector. Deflector can be removed as the tree grows
- JET** Static pressure compensating emitter for use where the water contains large amounts of sand
- STUB** Standard bearing
- SPUB** With a spring for upside down applications

SUPERNET™ SR		0215	CODE	DESCRIPTION		
<b>APPLICATIONS</b>			<b>63500-022550</b>	Z4992	20 lph, 60cm microtube and stake - Purple	●
<ul style="list-style-type: none"> <li>• Irrigation of orchards and trees with ground cover</li> </ul>			<b>63500-029050</b>	Z4997	70 lph, 60cm microtube and stake - Black	●
			<b>63500-030400</b>	Z4998	90 lph, 60cm microtube and stake plus stream splitter - Orange	●



# SPRINKLERS

## SUPERNET™

### SUPERNET™ JET 0215

#### APPLICATIONS

- Harsh and abrasive water conditions



### SUPERNET™ SRD 0215

#### APPLICATIONS

- Irrigation of orchards and trees with ground cover



### SUPERNET™ JET STATIC DEFLECTORS 0215



### SUPERNET™ MOUNTING ACCESSORIES 0225



1 & 2



3



4

CODE		DESCRIPTION	
63500-044267	Z3699	30 lph, 8 jet, 2 x 90°, 60cm microtube and stake – Brown	●
63500-046890	Z3968	50 lph, 6 jet, 1 x 180°, 60cm microtube and stake – Green	●
63500-051150	Z3697	90 lph, 12 jet 360°, 60cm microtube and stake plus stream splitter – Orange	●

CODE		DESCRIPTION	
63500-036855	Z4993	50 lph, 60cm microtube and stake – Green	●

CODE		DESCRIPTION	
63520-005350	Z3797	12 jet, 360°	●
63520-005380	Z3798	6 jet 180°	●
63520-005390	Z3799	4 jet, 90°	●

Can also be used with GyroNet™ JET

IMAGE	CODE		DESCRIPTION	
1	63520-005950	Z3728	Adaptor to metal/fibreglass 6mm rods	●
2	63520-005970	Z3729	Adaptor to metal/fibreglass 8mm rods	●
3	63520-010450	Z4999	SuperNet™ black stake	●
4	64420-003100		Clamp for wooden poles	●

# SPRINKLERS

## SUPERNET™

### TECHNICAL DATA

SUPERNET™ SR & SUPERNET™ SRD							
MODEL	FLOW RATE (L/H)*	NOZZLE CODE COLOUR	NOZZLE SIZE (MM)	WORKING PRESSURE RANGE (BAR)	WETTED DIAMETER (M)		SWIVEL (ROTOR) CODE COLOUR
					SR MODEL 20CM ABOVE GROUND	SRD MODEL 20CM ABOVE GROUND	
020	20	Purple	0.89	1.5-4.0	2.5	1.8	Blue
050	50	Green	1.43	1.5-4.0	4.5	1.8	Blue
070	70	Black	1.73	1.5-4.0	5.0	1.8	Blue
090	90	Orange	1.74	1.5-4.0	5.0	2.0	Blue

\*within working pressure

Barb connection

Recommended filtration 200µm/80 mesh

SUPERNET™ JET												
MODEL	FLOW RATE (L/H)*	NOZZLE CODE COLOUR	NOZZLE SIZE (MM)	WORKING PRESSURE RANGE (BAR)	WETTED RADIUS (M) 20CM ABOVE GROUND						DEFLECTOR CODE COLOUR	
					360 DEGREES 12 JETS	360 DEGREES 10 JETS	BUTTERFLY 2*4 JETS	180 DEGREES 6 JETS	90 DEGREES 4 JETS	FLAT SPRAY		
030	30	Brown	1.14	1.5-4.0	1.9	1.7	1.7	2.8	2.2	1.6	Orange	
050	50	Green	1.43	1.5-4.0	2.8	2.7	2.2	2.8	2.6	N/A	Orange	
090	90	Orange	1.74	1.5-4.0	2.9	2.9	2.5	3.1	2.9	N/A	Orange	

\*within working pressure

Barb connection

Recommended filtration 200µm/80 mesh

# SPRINKLERS

## SUPERNET™, DROPPER AND COOLNET™ SPARES

### NETAFIM MICRONET SPARES

#### SPINNET™ SPARE NOZZLES 0205



CODE		DESCRIPTION	
64220-003900	Z3718	50 lph - Green	●
64220-004000	Z3709	70 lph - Black	●
64220-004100	Z3712	90 lph - Orange	●
64220-004200	Z3713	120 lph - Red	●
64220-004250	Z3714	160 lph - Brown	●
64220-004300	Z3715	200 lph - Yellow	●

#### SPINNET™ SPARE SWIVEL 0205



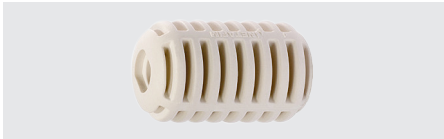
CODE		DESCRIPTION	
64200-001000	Z3707	Flat - Grey	●
64200-001020	Z3708	Long Range - Green	●
64200-001030	Z3716	Short Range - Blue	●

#### SPINNET™ SPARE SD 0210



CODE		DESCRIPTION	
63000-014250	Z3717	90/50 lph - Orange	●
63000-014300	Z3703	120/70 lph - Red	●
63000-014350	Z3704	160/90 lph - Brown	●
63000-014400	Z3705	200/120 lph - Yellow	●

#### SSPE DROPPER SPARES 0210



CODE		DESCRIPTION	
40000-004850	Z3706	SSPE 4 x 6.5mm grey microtube - 200m coil	●
63000-002910	Z3631	Spare Stabiliser	●

#### COOLNET™ SPARES 0210

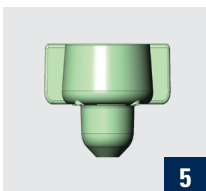
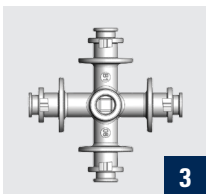
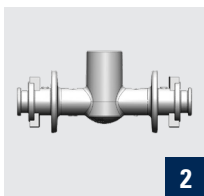


IMAGE	CODE		DESCRIPTION	
1	63120-001050	Z3721A	O-Ring for 1.55 x 5.5 body	●
2	63120-001500	Z3721	T Body	●
3	63120-001700	Z3722	Cross Body	●
4	63120-001850	Z3724	Plugged nozzle - Orange	●
5	63120-001970	Z3726	5.5 lph - Purple	●

# SPRINKLERS

## SPRINKLERS FOR LANDSCAPE

### FULL AND PART CIRCLE MICRO SPRINKLERS ON STANDS

#### FEATURES & BENEFITS:

SRD stream deflector concentrates the water flow within a short radius whilst trees and plants are established. The range can then be extended by snapping the deflector off.

JET uses a static emitter with a static deflector with six jets to produce a 180° spray distribution

Anti-insect mechanism prevents insects entering the micro-nozzle position

The materials used to manufacture the GYRONET™ are resistant to all agrochemicals and weather conditions.

Simple modular parts provide high levels of reliability and make service simple and low cost

Inlet connection is press fit

#### GYRONET™ SRD 0220

##### APPLICATIONS

- Short range revolving with deflector

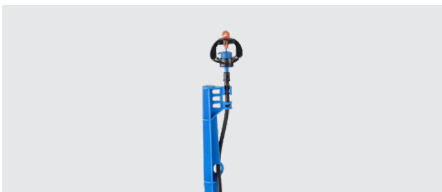


CODE	DESCRIPTION	
64000-033110	58 lph, head only – Grey	●
64000-034405	90 lph, head only – Orange	●
64000-034450	120 lph, head only – Red	●

#### GYRONET™ JET 6J 0220

##### APPLICATIONS

- Short range static emitter with six jets providing 180° cover



CODE	DESCRIPTION	
64000-021565	58 lph, head only – Grey	●
64000-022859	90 lph, head only – Orange	●
64000-022920	120 lph, head only – Red	●





# SPRINKLERS

## SPRINKLERS FOR LANDSCAPE

### GYRONET™ STAKE AND LEAD 0220

#### APPLICATIONS

- Black universal stake and 60cm lead
- Pushfit connections

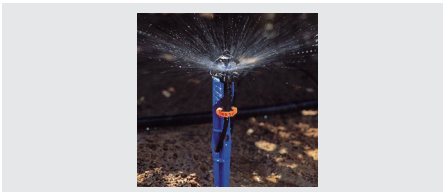


CODE	DESCRIPTION	
63000-009750	Universal Stake - Black	●
63000-005800	Microtube Lead 60cm	●

### SUPERNET™ SRD 0220

#### APPLICATIONS

- Short range revolving with deflector

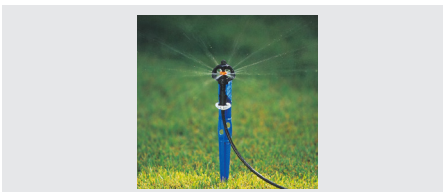


CODE	DESCRIPTION	
63500-121600	58 lph, head only – Grey	●
63500-122200	70 lph, head only – Black	●
63500-122800	90 lph, head only – Orange	●
63500-123400	110 lph, head only – Red	●

### SUPERNET™ JET 6J 0220

#### APPLICATIONS

- Short range static emitter with six jets providing 180° cover



CODE	DESCRIPTION	
63500-127640	70 lph, head only – Black	●

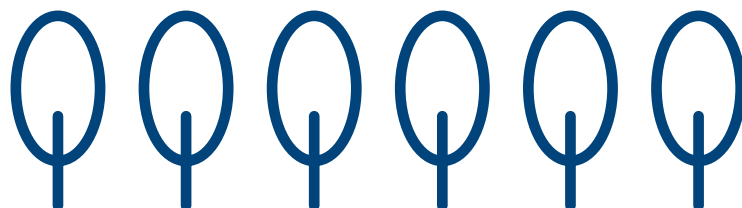
### SUPERNET™ STAKE AND LEAD 0220

#### APPLICATIONS

- Black universal stake and 60cm lead
- Pushfit connections



CODE	DESCRIPTION	
63520-010450	SuperNet™ - Black	●
63000-005800	Microtube lead - 60cm	●



# SPRINKLERS

## MEGANET™

### MEGANET™ 15D AND 24D ROTATING IMPACT SPRINKLER

#### FEATURES & BENEFITS:

The two equal water streams create a balanced performance with the sprinkler and stand remaining vertical thereby ensuring optimum uniform distribution of water.

The water is applied in such a way that the soil is not scored or grooved thereby preventing damage to crops, particularly seedlings, during irrigation.

Two spray angles, 15° and 24°, allowing the most suitable model to be chosen for any particular application.

The closed case design protects the drive mechanism during transportation.

The closed case prevents insect entering the drive mechanism ensuring consistent performance.

An integral filter preventing clogging.

The caps are colour coded for easy identification.

The distribution uniformity is the highest in the industry.

Installation can be on solid sets or removable field stands.

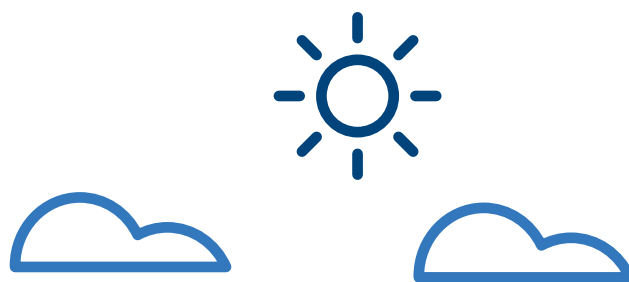
Netafim's MegaStand™ is specifically for use with Netafim Open Field Sprinklers allowing easy installation and ensuring the stability of the sprinkler and rod assembly during installation.

A road guard accessory is available allowing the use of the MegaNet™ along the edges of irrigated area without overthrow.

#### THE MEGANET™ IS AVAILABLE IN TWO TECHNOLOGY VARIANTS TO BE SELECTED BASED ON SPECIFIC REQUIREMENTS:

**15D** 15° Trajectory

**24D** 24° Trajectory



# SPRINKLERS

## MEGANET™

### MEGANET™ 15D 0220

#### APPLICATIONS

- Open field crops, crop germination and frost protection
- Under tree and shade/net houses



CODE	DESCRIPTION	
63600-004900	15D, 200 l/h, head only	●

### MEGANET™ 24D 0220

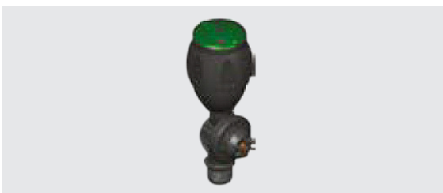


CODE	DESCRIPTION	
63600-001000	24D, 350 l/h, head only	●
63600-002000	24D, 450 l/h, head only	●
63600-003000	24D, 550 l/h, head only	●
63600-004500	24D, 750 l/h, head only	●

### MEGANET™ 24D ANTI-DRAIN 0220

#### APPLICATIONS

- Open field crops, crop germination and frost protection

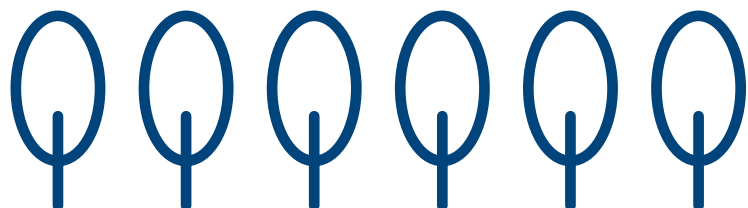


CODE	DESCRIPTION	
63600-001720	24D, anti-drain, 200 l/h, head only	●
63600-001900	24D, anti-drain, 350 l/h, head only	●
63600-002010	24D, anti-drain, 450 l/h, head only	●
63600-004010	24D, anti-drain, 650 l/h, head only	●

### MEGANET™ ACCESSORIES 0220



CODE	DESCRIPTION	
63620-007000	Road guard	●
63620-004500	Service tool	●



# SPRINKLERS

## MEGANET™

### TECHNICAL DATA

MEGANET™ 24D					PRECIPITATION (MM/H)							
NOZZLE SIZE (MM)	CODE COLOUR	WORKING PRESSURE (BAR)	FLOW RATE (L/H)	WETTED DIAMETER (M)	SPACING (M X M)							
					7 x 8	8 x 8	8 x 10	9 x 9	10 x 10	10 x 11	10 x 12	
1.85	Yellow	2.5	210	11.0	3.6	3.3						
		3.0	230	11.0	3.8	3.6						
2.06	Purple	2.5	258	12.0	4.4	4.0						
		3.0	283	12.0	4.8	4.4						
2.44	Green	2.5	362	14.0	5.9	5.6	4.5	4.4	3.6			
		3.0	396	14.0	6.5	6.2	5.0	4.9	4.0			
2.79	Blue	2.5	461	17.0	8.1	7.2	5.8	5.7	4.6	4.2	3.9	
		3.0	505	17.0	8.7	7.9	6.3	6.2	5.0	4.6	4.2	
3.08	Brown	2.5	553	18.0	10.0	8.6	6.9	7.2	5.5	5.0	4.6	
		3.0	605	18.0	10.1	9.5	7.6	7.5	6.1	5.5	5.1	
3.37	Orange	2.5	678	18.0	11.5	10.6	8.5	8.4	6.8	6.2	5.7	
		3.0	743	18.0	12.3	11.6	9.3	9.2	7.4	6.8	6.2	
3.68	Red	2.5	785	18.0	13.4	12.3	9.8	9.7	7.9	7.1	6.6	
		3.0	860	19.0	15.0	13.4	10.7	10.6	8.6	7.8	7.2	

\*at least 0.5 mm/h

\*\*Performance table prepared under laboratory conditions, sprinkler head 1.0 metre above ground

CU = or > than 92%

CU = or > 88% and < 92%

CU = or > 86% and < 88%

CU < 86%

1/2" male threaded connection

Recommended filtration 400µm/40 mesh

# SPRINKLERS

## D-NET™

### D-NET™ SPRINKLERS

#### FEATURES & BENEFITS:

Unique 3D arm that enables the highest uniformity of coverage in the industry to be achieved.

Highly robust design and manufacture to ensure constant long term operation.

The materials used are UV protected and resistant to all agro-nutrients and weather conditions.

Can be installed on solid sets, Netafim's unique FlexNet™ system using the Netafim MegaStand™, or on removable field stands.

The special nozzle key is designed to allow nozzle cleaning even when the sprinkler is operating.

Colour coded nozzles for ease of identification.

AA models are adjustable part circle and full circle

#### D-NET™ SPRINKLERS ARE AVAILABLE IN TWO TECHNOLOGY VARIANTS TO BE SELECTED BASED UPON THE SPECIFIC APPLICATION:

**8550** Wetted diameter range of 18 metres to 21 metres and a flow range of 510 lph to 1275 lph

**9575** Wetted diameter range of 22 metres to 29 metres and flow range of 1200 lph to 2000 lph

#### D-NET™ 8550 0220

##### APPLICATIONS

- Open field crops, nurseries, crop germination



CODE	DESCRIPTION	NOZZLE COLOUR
60100-000990	580 lph, 2.3 + 1.8	Grey + lime green ●
60100-001000	580 lph, 2.5 + 1.8	Purple + lime green ●
60100-001010	680 lph, 2.9 + 1.8	Orange + lime green ●
60100-001030	810 lph, 3.2 + 1.8	Green + lime green ●
60100-001040	940 lph, 3.5 + 1.8	Blue + lime green ●
60100-004350	AA 500 lph, 2.9 + 1.8	Orange + lime green ●
60100-003351	AA 630 lph, 3.2 + 1.8	Green + lime green ●

\* AA is the adjustable part circle version of the D-Net 8550

#### D-NET™ 9575 0220

##### APPLICATIONS

- Open field crops



CODE	DESCRIPTION	NOZZLE COLOUR
60100-002000	1200 lph, 3.57 + 2.5	Blue + yellow ●
60100-002010	1400 lph, 3.96 + 2.5	Green + yellow ●
60100-002020	1600 lph, 4.36 + 2.5	Grey + yellow ●
60100-002030	1800 lph, 4.76 + 2.5	Yellow + yellow ●
60100-002040	2000 lph 5.10 + 2.5	Black + yellow ●
60100-002190	AA 850 lph 3.57 + 2.5	Blue + yellow ●
60100-002191	AA 1030 lph, 3.96 + 2.5	Green + yellow ●

\* AA is the adjustable part circle version of the D-Net 9575

# SPRINKLERS

## D-NET™

### TECHNICAL DATA

D-NET™ 8550								
NOZZLE SIZE (MM)	CODE COLOUR	WORKING PRESSURE (BAR)	FLOW RATE (L/H)	WETTED DIAMETER (M)	PRECIPITATION (MM/H)			
					SPACING (M X M)			
					10 x 12	11 x 12	12 x 12	13 x 12
2.3 + 1.8	Grey + lime green	1.5	395	18	3.5	3.2	2.9	2.1
		2.0	458	18	3.5	3.2	2.9	2.7
		2.5	510	19	4.4	4.0	3.7	3.4
		3.0	559	19	4.8	4.4	4.0	3.7
2.5 + 1.8	Purple + lime green	1.5	449	18	3.7	3.4	3.1	2.9
		2.0	519	19	4.4	4.0	3.6	3.3
		2.5	580	19	4.9	4.4	4.0	3.7
		3.0	635	20	5.4	4.9	4.5	4.2
2.9 + 1.8	Orange + lime green	1.5	527	18	4.4	4.0	3.7	3.4
		2.0	608	19	5.1	4.6	4.2	3.9
		2.5	680	20	5.7	5.1	4.7	4.3
		3.0	745	20	6.2	5.6	5.2	4.8
3.2 + 1.8	Green + lime green	1.5	627	18	5.2	4.8	4.4	4.0
		2.0	724	19	6.1	5.5	5.0	4.7
		2.5	810	21	6.8	6.1	5.6	5.2
		3.0	887	21	7.4	6.7	6.2	5.7
3.5 + 1.8	Blue + lime green	1.5	728	18	6.0	5.5	5.0	4.6
		2.0	841	19	7.0	6.4		5.4
		2.5	940	21	7.9	7.1	6.5	6.0
		3.0	1030	21	8.6	7.8	7.2	6.6

\*at least 0.5 mm/h

\*\*Performance table prepared under laboratory conditions, sprinkler head 1.0 metre above ground

CU = or > than 92%

CU = or > 88% and < 92%

CU = or > 86% and < 88%

CU < 86%

# SPRINKLERS

## D-NET™

D-NET™ 9575										
NOZZLE SIZE (MM)	CODE COLOUR	WORKING PRESSURE (BAR)	FLOW RATE (L/H)	WETTED DIAMETER (M)	PRECIPITATION (MM/H)					
					SPACING (M X M)					
					12x 12	12 x 15	12 x 18	15 x 15	15 x 18	18 x 18
3.57 + 2.5	Blue + yellow	2.0	980	22.0	6.8	5.4	4.5	4.4	3.6	
		2.5	1095	22.0	7.6	6.1	5.1	4.9	4.1	
		3.0	1200	32.0	8.3	6.7	5.6	5.3	4.4	
		3.5	1296	24.0	9.0	7.2	6.0	5.8	4.8	
		4.0	1385	24.0	9.6	7.7	6.4	6.2	5.1	4.3
3.98 + 2.5	Green + yellow	2.0	1145	23.0	8.0	6.4	5.3	5.1	4.2	3.5
		2.5	1280	24.0	8.9	7.1	5.9	5.7	4.7	4.0
		3.0	1400	25.0	9.7	7.8	6.5	6.2	5.2	4.3
		3.5	1515	25.5	10.5	8.4	7.0	6.7	5.6	4.7
		4.0	1620	26.0	11.3	9.0	7.5	7.2	6.0	5.0
4.36 + 2.5	Grey + yellow	2.0	1306	23.0	9.1	7.3	6.0	5.8	4.8	4.0
		2.5	1460	25.0	10.8	8.1	6.8	6.5	5.4	4.5
		3.0	1600	25.0	11.1	8.9	7.4	7.1	5.9	4.9
		3.5	1727	26.0	12.0	9.6	8.0	7.7	6.4	5.3
		4.0	1846	26.0	12.8	10.3	8.5	8.2	6.8	5.7
4.76 + 2.5	Yellow + yellow	2.0	1471	22.0	10.2	8.2	6.8	6.5	5.4	
		2.5	1645	25.0	11.4	9.1	7.6	7.3	6.1	5.1
		3.0	1800	26.0	12.5	10.0	8.3	8.0	6.7	5.6
		3.5	1946	27.0	13.5	10.8	9.0	8.6	7.2	6.0
		4.0	2081	28.0	14.5	11.6	9.6	9.2	7.7	6.4
5.10 + 2.5	Black + yellow	2.0	1632	22.0	11.3	9.1	7.6	7.3	6.0	
		2.5	1825	25.0	12.7	10.1	8.4	8.1	6.8	5.6
		3.0	2000	27.0	13.9	11.1	9.3	8.9	7.4	6.2
		3.5	2160	28.0	15.0	12.0	10.0	9.6	8.0	6.7
		4.0	2310	29.0	16.0	12.8	10.7	10.3	8.6	7.1

CU = or > than 92%

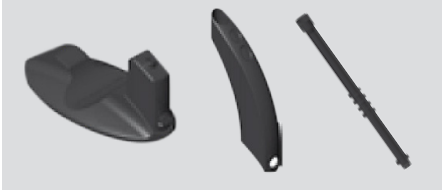
CU = or > 88% and < 92%

CU = or > 86% and < 88%

CU < 86%

# SPRINKLERS STANDS

## MEGA STAND 0225



CODE	DESCRIPTION	
64520-002480	Mega Base	●
64520-002485	Mega Base Support Arm	●
64520-002490	Mega Base Riser 40cm ½" M x ½"F	●

## SPRINKLER STANDS AND STAKES 0225



CODE	DESCRIPTION	
64520-004900	Sprinkler Stand 9*12 120cm & tube FS & PE	●
64520-004910	Sprinkler Stand 9*12 120cm & tube FS & FlexNet™	●
64520-002300	Sprinkler Stand 9*12 120cm * tube c/w 8mm rod	●
65080-001700	8cm x 120cm metal rod	●

## FIELD STANDS ACCESSORIES 0225



IMAGE	CODE	DESCRIPTION	
1	65080-002600	Sprinkler Stand Connector Flat Female/Barb - Brown	●
2	65080-002871	Sprinkler Stand Connector Male/Barb for 9*12 tube	●
3	65080-002880	Sprinkler Stand Male Plug	●
4	65080-005010	Sprinkler Stand Connector F&S Female/Barb - Brown	●
5	65080-005210	Sprinkler Stand Connector FTN F&S for Female/1/2" Male Thread	●
6	65080-005060	Sprinkler Stand Connector Quick Conn Male/12+O Ring	●
7	65080-005090	Sprinkler Stand Connector F&S Locking Sleeve 12	●
8	45000-001450	8mm Punch with Inserter	●
9	45000-002400	Screw Punch 8mm	●



# SPRINKLERS

## DUTCH SPRINKLERS

### PULSATOR 0240



CODE		DESCRIPTION	
02206-105799		Rotor 4 lph 20cm PE	●
02206-105800	Z3235	Rotor 4 lph 15cm PE	●
02206-105854	D105854	Mist 4 lph 15cm PE	●

### BLIND SPRINKLERS 0240

CODE		DESCRIPTION	
02207-105000	Z5380	Blank Dummy Sprinkler 3/8" WW	●
02207-105005	Z5385	Blank Dummy Sprinkler M11	●
02209-105011	Z5390	Assembly Insert 3/8" WW	●

### PIN JETS 3/8WW 0240



CODE		DESCRIPTION	
02207-105300	Z5370A	5.3 lph - Black	●
02207-105301	Z5365A	4.9 lph - Orange	●
02207-105303	Z5355A	4.2 lph - Blue	●
02207-105304	Z5375A	5.8 lph - Violet	●
02207-105306	Z5345A	3.6 lph - Green	●
02207-105316	Z5360A	4.6 lph - Red	●
02207-105317	Z5350A	3.9 lph - Grey	●

### PIN JETS M11 0240



CODE		DESCRIPTION	
02207-105302	Z5325A	4.9 lph - Orange	●
02207-105305	Z5330A	5.3 lph - Black	●
02207-105311	Z5305A	3.6 lph - Green	●
02207-105314	Z5310A	3.9 lph - Grey	●
02207-105315	Z5315A	4.2 lph - Blue	●
02207-105318	Z5320A	4.6 lph - Red	●
02207-105319	Z5335A	5.8 lph - Violet	●

**Irrigation Design and Sales Limited**

**10 Bay Close**

**Three Legged Cross**

**Wimborne**

**Dorset**

**BH21 6SW**

**Tel/Fax : 01202 825174**

**Mobile : 07850 327994 (Wim van Varik)**

