



**CROP  
MANAGEMENT  
TECHNOLOGY**



# IRRIGATION

## NMC™

- Manual and automatic irrigation
- 6 start times with upto 99 clock starts each per program
- Conditional starts
- Rad Sum and Vapour Pressure Deficit based programs
- Upto 8 fertiliser injection channels
- Filter flushing; time or pressure differential based
- Cooling, misting and water heating
- Stock selection feature allowing fertiliser control for different crops
- SMS capability with alarm status sent to mobile phone
- Able to run from and control generator

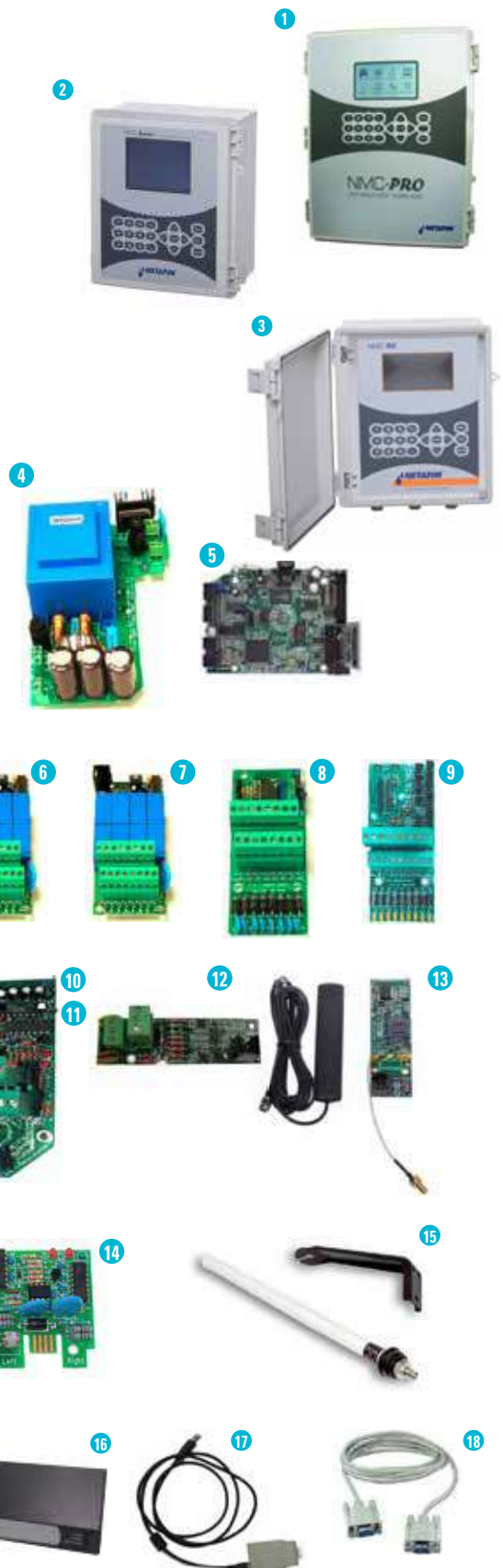
### Logging

- Irrigation logs
- Events history
- Sensors readings
- Water and fertiliser accumulation

Netafim Code	Manufacturer's Code	Description	#
AZ3848	74340-013275	NMC Pro	1
AZ3895	74340-004985	NMC junior	2
AZ3960	74340-013590	NMC DC	3

Netafim Code	Manufacturer's Code	Description	#
AZ3922	74340-008000	NMC Pro power card	4
AZ3872	74340-014600	NMC Pro cpu card	5
AZ3864	74340-008500	NMC Pro 24v output card	6
AZ3888	74340-008600	NMC Pro dry contact output card	7
AZ3866	74340-008800	NMC Pro digital input card	8
AZ3868	74340-008900	NMC Pro analogue input card	9
AZ3870	74340-009200	RS485 comm card	10
AZ3974	74340-012800	Double RS485 com card	11
AZ3975	74340-009100	Double RS232 com card	12
AZ3940	74340-012805	NMC Pro GSM RCLP Modem	13

Netafim Code	Manufacturer's Code	Description	#
AZ3993	74340-006700	Junior 485 card	14
AZ3939	NA	High gain antenna	15
AZ3567	74340-003615	NMC-uManage mux single	16
AZ3568	74340-003635	NMC-uManage mux network	16
AZ3990	00035-014770	USB Polenet cable	17
AZ3991	NA	Serial cable	18



# IRRIGATION

## NMC™ PRO HARDWARE

Netafim Code	Manufacturer's Code	Description	#
<b>AZ3937</b>	74340-008100	NMC Pro 240/24v transformer coil	1
<b>AZ3936</b>	74340-004920	NMC Pro replacement screen	2
<b>AZ3971</b>	74340-007800	NMC Pro BUS	2



Netafim Code	Manufacturer's Code	Description	#
<b>AZ3992</b>	74360-007900	ABB ECpH 12v transmitter	3
<b>AZ3992A</b>	74360-007700	ABB ECpH 240v transmitter	3
<b>AZ3879</b>	45000-006705	EC sensor PT100 (for ABB)	4
<b>AZ3880</b>	45000-006690	Ec sensor (Netafim ECpH)	4
<b>AZ3881</b>	33120-008500	PVC Probe adapter	5
<b>AZ3882</b>	45000-006692	Ph sensor plug	6
<b>AZ3883</b>	45000-006701	Ph sensor bare wires (for ABB)	7



Netafim Code	Manufacturer's Code	Description	#
<b>AZ3874</b>	45000-006440	Ph4.01 buffer solution 20ml	8
<b>AZ3875</b>	45000-006460	Ph7.01 buffer solution 20ml	9
<b>AZ3878</b>	45000-006480	EC 1.4 buffer solution	10



Netafim Code	Manufacturer's Code	Description	#
<b>AZ3935</b>	74340-004955	Davis weatherstation for NMC Pro	11
<b>AZ3973</b>	74340-004650	Rain Detector	12
<b>AZ3903</b>	74340-004550	Pyranometer	13
<b>AZ3846</b>	35500-003280	Bracket for pyranometer	14
<b>AZ3847</b>	74340-004100	Measuring box - temperature and humidity for VPD	15



# IRRIGATION RADIONET™

A wireless system with the benefit of great flexibility. Radionet is often suitable for situations where running cable is expensive, awkward or simply impossible.

Each Remote Transmission Unit (RTU):

- 1 x 12v DC latch (pulse) output, expandable upto 9 outputs
- 2 digital inputs, expandable upto 10 inputs
- Up to 254 valves per network
- 1.5 km range between radios
- Solar powered with rechargeable battery
- Resilient - Radionet temperature range is -25°C to 85°C (-13°F to 185°F) which ensures reliable operation under the most severe environmental conditions
- Every Radionet RTU is capable of simultaneous control and repeating. This allows RTUs to be daisy chained, with each remote unit operating as a "Store & forward" (S&F) data repeater to increase geographical coverage upto 1.5 km (0.93 miles) between every two units and up to 14 hops
- Compatibility – Versatile and easy connectivity to a wide range of controllers currently on the market including Netafim's NMC Pro
- License free radio
- PC based configuration and diagnostics



1



2



4



5

Netafim Code	Manufacturer's Code	Description	#
AZ3858	74340-009530	NMC Pro license key for 128	1
AZ3908	74330-012000	Radionet host complete	2
AZ3907	74330-012100	Radionet base station	3
AZ3910	74330-012200	Radionet rtu 1dox2di	3
AZ3911	74330-013140	Radionet exp card 2dox2di	4
AZ3913	74330-002950	Radionet solar kit 6v1.1w	5
AZ3865	77100-005880	Ground kit	
AZ3966	74330-005020	Radionet ant 430-470 3m	6
AZ3912	74330-005050	Radionet ant 430-470 6m	6
AZ3909	74330-005100	Radionet ant 430-470 10m	6
AZ4000	74330-010220	LiFePO4 battery 7v	7
AZ3914	NA	Lead acid battery 6v	



7

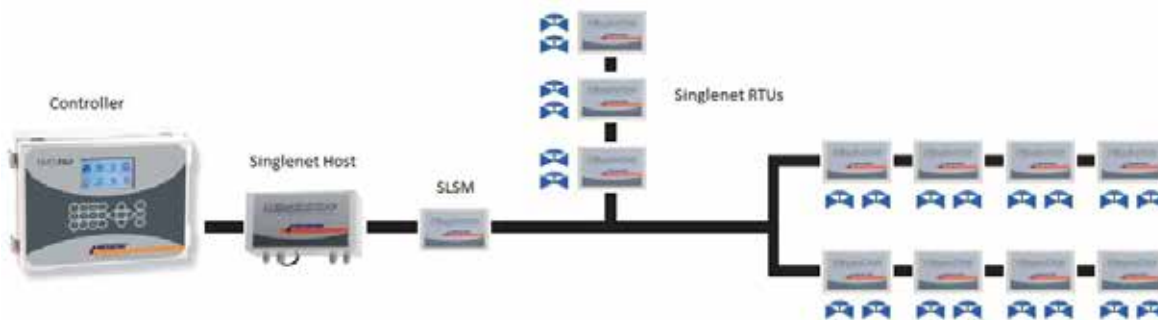
6

# IRRIGATION SINGLETNET™

Two wire system allowing for easy expansion and saving of cable.

Each Remote Transmission Unit (RTU) includes:

- 2x 12v DC latch (pulse) outputs
- 2x digital inputs
- Resin sealed for complete protection from moisture and corrosion
- Parallel Lightning Suppression Module (PLSM) protects the network from power surges
- Available as single or double RTU modules, with optional addition of PLSM
- Up to 128 RTUs per network
- Supports up to 10,000m of 2 core cable
- Galvanic isolation to the 2 wire network
- Short circuit protection with auto retry
- PC based configuration and diagnostics
- Compatible with other control systems



Netafim Code	Manufacturer's Code	Description	#
AZ3858	74340-009530	NMC Pro license key for 128	1
AZ3893	33000-012100	Singlenet host; power supply, loose card and bracket	1
AZ3890	00035-001750	Singlenet host; box and power supply	2
AZ3925	74340-015800	Singlenet rtux2 sealed	3
AZ3926	74340-015830	Singlenet rtux2 plsm sealed	3
AZ3927	74340-015860	Singlenet rtux4 sealed	3
AZ3928	74340-015890	Singlenet rtux4 plsm sealed	3
AZ3929	00035-008300	Singlenet 2 in 2 out card only	3
AZ3862	00035-008300	Singlenet slsm suppression mod	4
AZ3865	77100-005880	Ground kit for singlenet plsm	4



# CLIMATE

## CLIMATE NMC™

The NMC pro climate is a 4 zone climate controller built upon the same hardware as the NMC pro irrigation, benefiting from many of its features and advantages.

### Control

- Manual and automatic zone control
- Upto 16 vents per zone
- Upto 2 shading/thermal screens per zone
- Upto 4 fogging/misting valves per zone
- 1 cooling pad per zone
- Upto 4 circulation fan groups per zone

### Logging

- Events history
- Sensors readings
- Weather station logs

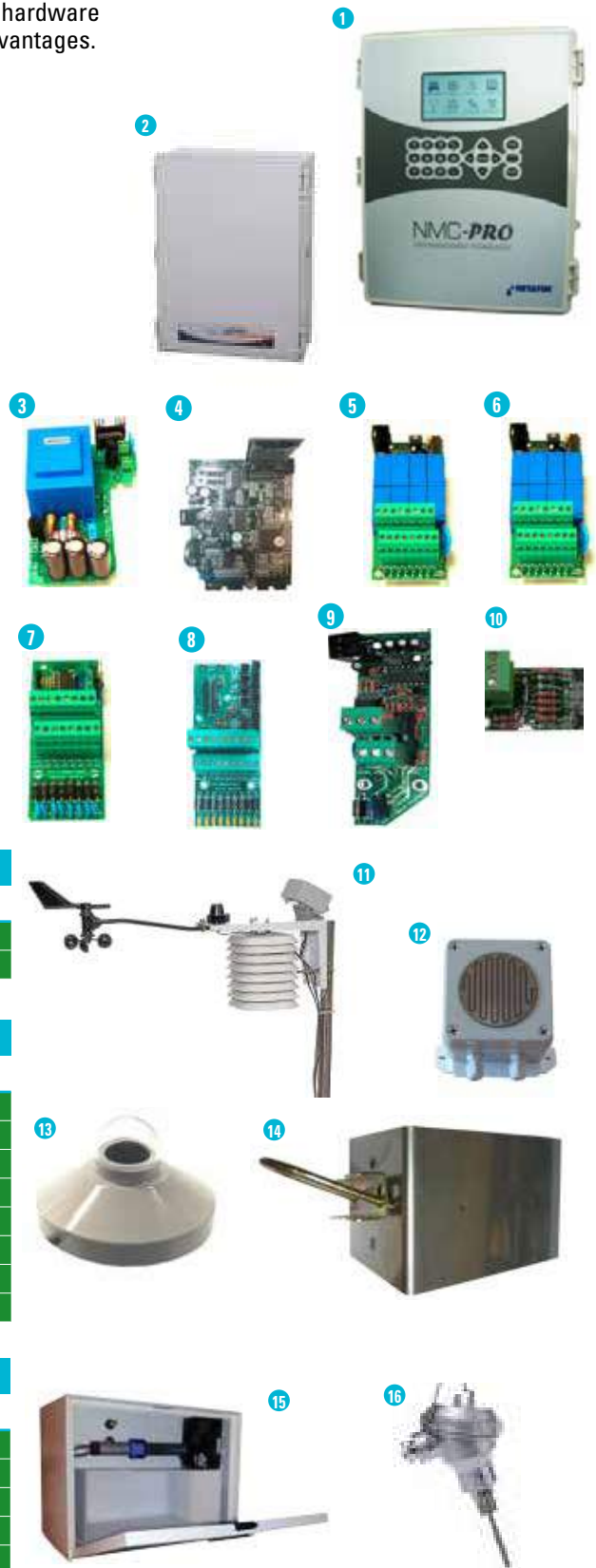
### Hardware

- Upto 64 24v outputs, expandable to 255 outputs
- Upto 16 digital inputs, expandable to 96
- Upto 22 analogue inputs, expandable to 110
- Dual 240v/12v power
- Remote PC control using wired or internet connection
- Expandable hardware using RS485 expansion boxes

Netafim Code	Manufacturer's Code	Description	#
AZ3848	74340-013275	NMC Pro Climate	1
AZ3948	74340-013995	NMC Pro Expansion Box	2

Netafim Code	Manufacturer's Code	Description	#
AZ3922	74340-008000	NMC Pro power card	3
AZ3872	74340-014600	NMC Pro cpu card	4
AZ3864	74340-008500	NMC Pro 24v output card	5
AZ3888	74340-008600	NMC Pro dry contact output card	6
AZ3866	74340-008800	NMC Pro digital input card	7
AZ3868	74340-008900	NMC Pro analogue input card	8
AZ3870	74340-009200	RS485 comm card	9
AZ3974	74340-012800	Double RS485 com card	10

Netafim Code	Manufacturer's Code	Description	#
AZ3935	74340-004955	Davis weatherstation for NMC Pro	11
AZ3973	74340-004650	Rain Detector	12
AZ3903	74340-004550	Pyranometer	13
AZ3846	35500-003280	Bracket for pyranometer	14
AZ3847	74340-004100	Measuring box - temperature and humidity for VPD	15
AZ3949	74340-010305	Water temperature sensor	16



# MONITORING

## rNet™ for uManage™

Netafim's technological know-how plays an important role in transferring data from the field to the growers' PC, tablet or mobile device. The monitoring solution includes an advanced radio system ensuring reliable and accurate communications. Comprised of a router unit (serving as a base station), repeaters (when line of sight is poor), and remote terminal units (RTUs), the radio system collects data from sensors and hydraulic units that is accessible to end users.

- Low power, long-lasting battery
- Remote access and support to/from any unit
- Multiple communication interfaces (e.g. RF, cellular)
- Programmable and parametric units



1

Netafim Code	Manufacturer's Code	Description	#
AZ3554	74390-001200	rLink-base-dir-765-ext	1
AZ3561	74390-001210	rLink base cel 865 ext	1
AZ3555	74390-001400	rLink-router-865	1

Netafim Code	Manufacturer's Code	Description	#
AZ3556	74390-002600	rSense-865	1

Netafim Code	Manufacturer's Code	Description	#
AZ3551	74390-003800	Netasense soil moisture sensor	2
AZ3557	4390-005100	rSense convertor for Netasense	
AZ3563	74390-007600	rSense tensiometer 30cm	
AZ3564	74390-007650	rSense tensiometer 60cm	
AZ3566	74390-007100	rSense rod 1" 1.8m	
AZ3558	74390-005000	rSense ext 6m 4t04 pins	
AZ3559	74340-004460	Humidity sensor ws	3
AZ3560	74370-002500	Temperature and humidity sensors with shield	4
AZ3562	74390-005200	rSense converter 3-4pins ecl20-5	



2



3



4

# MONITORING

## uManage™

### UMANAGE: END-TO-END MONITORING SOFTWARE

Netafim offers uManage™, an advanced crop management application featuring monitoring software. Providing a broad real-time and historic view of all growing processes, the software helps growers improve their decision making in order to ensure precise fertilization, optimize resource usage, and enhance irrigation scheduling.

Highly innovative and user friendly, uManage features a mobile user interface (UI) for smartphones and tablets. The UI is a powerful tool for receiving real-time information and alarms related to growers' in-field activities including manual inputting of location-based data, photographing of locations, and recording of observations. The information is automatically uploaded to the server and easily accessible like all other data.

- Complete real-time situation picture
- Enhanced decision making
- Knowledge-sharing opportunities



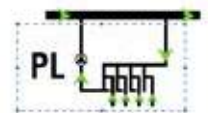
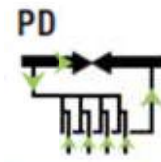
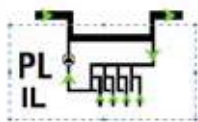
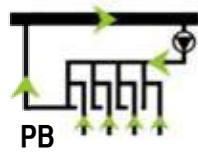
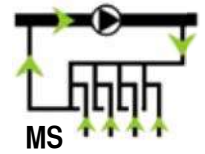


# DOSING RIGS

## FERTIKIT 3G™

Fertkit is Netafim's direct injection system for smaller projects not requiring the features of a Netajet. Fertkit benefits from a large degree of customizability, with fitting options for any Netafim controller.

- Basic and economic solution for soil applications
- Modular design allows Fertkit to be tailored to grower requirements
- Dedicated solution for storage water tank applications
- Venturi based dosing channels with no moving parts



### FERTIKIT 3G

MODEL	MS	PL	PB	PD	PBI
System Flow range (m3 / hour)	0.5-120	0.5-120	0.5-100	20-100	0.5-20
System pressure range (Bar)	2 - 8	2.5 - 6.5	1 - 2.5	2-8	1 - 2.5
Dosing Channel flow range (litres/h)	50 - 1000	50 - 1000	50 - 150	50 - 250	50 - 150
Number of channels (acid channel optional)	6	6	4	4	4
Irrigation System Pump	Not included	Not included	Not included	Not included	Not included
Dosing Pump	Not included	Included	Included	Not included	Included

# DOSING RIGS

## NETAJET™

Netafim's flagship dosing rig offers optimized resource utilization for every specific land type and crop.

Based on Netafim's unique nitrigation technology, Netajet allows the grower to save energy, fertilizer and water while increasing yield quality and quantity.

Modular system configured to specific client requirements, Netajet provides lower cost of ownership and a very fast return on investment as part of Netafim's comprehensive solution.

- Fully integrated NMC Pro irrigation controller as standard
- Accurate fertilizer and acid control with unique mixing line
- Converts precise pulse fertigation into a uniform solution
- Helps to prevent water and fertilizer waste while reducing environmental pollution
- Optional double sensor cross checking for the most accurate of control
- Two distinct modes of operation: Inline, a system allowing all water to flow through the Netajet mixing line and bypass for systems requiring flow rates about 20M3/h



Netajet BY-PASS ST™



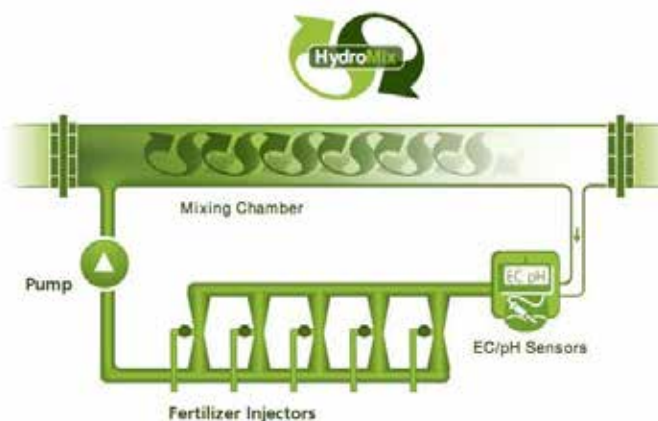
Netajet INLINE PL™



Netajet BY-PASS PL™



Netajet HIGH-FLOW™



### NETAJET

MODEL	IN-LINE ST	IN-LINE PL	Bypass ST	Bypass PL	High Flow
System Flow range (m3 / hour)	0.5 - 20	0.5 - 20	20 - 120	20 - 120	40 - 400
System pressure range (Bar)	3 - 5.5	3 - 5.5	3 - 5.5	3 - 5.5	2.8 - 6.2
Dosing Channel flow range (litres/h)	300	300	300	300	1000
Number of channels (acid channel optional)	5	5	5	5	5
Irrigation System Pump	Included	Not included	Included	Not included	Not included
Dosing Pump	Included	Included	Included	Included	Included

# DOSING RIGS

## NETAFLEX™

Featuring a state-of-the-art Open tank mixing system, Netaflex™ 3G provides very high level of dosing Precision and uniformity for greenhouses crops. A modular CE-compliant dosing system, Netaflex 3G easily integrates with multiple Netafim and third-party controllers and monitoring systems. Netaflex always injects a uniform quantity of nutrients and perfect EC&PH control.

- Modular Nutrigation™ system
- Wide range of soil/substrate application built around a standard platform
- Minimal investment requirement
- Efficient water, fertilizer and energy consumption
- Very large range of irrigation water capacities
- Quantitative or proportional Nutrigation™ capabilities
- Guaranteed EC and pH control
- Almost completely maintenance-free Venturi operations - no moving parts
- Highly accurate dosing channels
- Fast and efficient Nutrigation™ recipe adjustments
- Easy integration into existing irrigation systems, Netafim's NMC, and third-party controllers
- Multilingual system



Netajet NETAFLEX™ 20



Netajet NETAFLEX™ 32

NETAFLEX		
MODEL	STANDARD	OPTIONAL
System Flow range (m3 / hour)		3 - 64
System pressure range (Bar)	3 - 4.5	3 - 5.5
Dosing Channel flow range (litres/h)	50 - 600	
Number of channels (acid channel optional)	5	5
Irrigation System Pump	Not-Included	Not-Included
Dosing Pump	Included	Included

# DOSING RIGS SPARES

Netafim Code	Manufacturer's Code	Description
AZ3871	NA	SHIELDED MUX 4CORE CABLE
AZ9312	NA	3 CORE 0.75MM SCREENED CABLE
AZ9313	NA	4 CORE 0.75MM SCREENED CABLE
AZ9313A	NA	4 CORE 0.75MM SCREENED CABLE
AZ9323	NA	7 CORE 0.75MM SCREENED CABLE
AZ9325	NA	GEL CONNECTOR SMALL UR2
AZ9326	NA	GEL CONNECTOR LARGE

Netafim Code	Manufacturer's Code	Description
AZ3640	NA	PUMP REMOTE START MANUAL OVERRIDE BOX
AZ3869	NA	X8200 RADIO MODEM
AZ3923	NA	12V 24AH BATTERY
AZ3930	NA	12V DC X 240V AC POWER
AZ3939	NA	HIGH GAIN ANTENNA + 10M
AZ3950	NA	SERIAL SWITCH BOX
AZ3980	74340-003750	NMC POWER LINE PROTECTOR
AZ3990	00035-014770	USB POLENET CABLE
AZ3991	NA	SERIAL CABLE 1M
AZ3998	NA	VOLTAGE REGULATOR 12VDC
AZ3843	74300-003954	6M EXT ANTENA
AZ3844	74300-003960	3M EXT ANTENA

Netafim Code	Manufacturer's Code	Description
AZ3920	77540-007575	ROTOMETER 150 LTR
AZ3853	77540-007570	ROTOMETER 400LTR
AZ3611	77540-007577	ROTOMETER 600 LTR
AZ3619	77540-007580	ROTOMETER 1000 LTR
AZ3884	70800-001785	BACCARA DOSING VALVE 1/2"
AZ3978	70800-001770	BACCARA DOSING VALVE VITON 1/2"
AZ3886	77800-004000	BURKET SOLENOID TYPE 124
AZ3952	77540-008480	S 12 VALVE
AZ3953	33120-007400	S 12 VALVE UPGRADE KIT
AZ3979	77540-008500	FIP S22 24VAC 1000LTR DOSING VALVE
AZ3969	77800-004010	BACCARA DOSING VALVE PLUG WITH CABLE
AZ3649	NA	FLOW SWITCH 1"
AZ3845	71000-002450	BERMAD 1½" PSUS VALVE
AZ3917	35500-001300	AQUATIVE AC
AZ3918	35500-002000	AQUATIVE DC
AZ3946	NA	FERTILIZER INJECTION HOSE KIT
AZ3947	NA	FERTILIZER PROPORTIONAL HOSE KIT
AZ3954	71020-011990	8MM NON-RETURN VALVE
AZ3967	77540-007850	ORANGE TAP 1/2"
AZ3976	71020-011950	8MM ORFICE T FOR PSV
AZ3981	76540-002750	3/4" VITON ACID CHANNEL SEAL
AZ4001	NA	WATER METER REED GREY
AZ4002	NA	WATER METER REED BLUE

Netafim Code	Manufacturer's Code	Description
AZ3851	76400-011380	TEFEN NEEDLE VALVE 1/4"
AZ3855	77300-022800	GEKA PVC 3/4" F
AZ3857	77300-022700	GEKA PVC 3/4" M
AZ3859	33000-003210	NJET FERTILIZER CHANNEL 300
AZ3867	33120-007240	NJET CONCENTRATED ACID CHANNEL 50
AZ3944	77800-002180	BACK PRESS SWITCH 1-3BAR
AZ3955	71040-001385	BERMAD 1.5" PRV NETAJET
AZ3956	77540-003350	PRESSURE GAUGE 1.5" NETAJET
AZ3968	33120-004000	NETAJET 3G ACID VENTURI
AZ3970	33120-003720	N3G DOSE UNION NOZZLE LONG

Netafim Code	Manufacturer's Code	Description
AZ3605	33230-001100	F3 DUAL CHANNEL E40 KIT
AZ3603	33230-001020	F3 DUAL CHANNEL E60 KIT
AZ3618	33240-002380	FKIT 3G DUAL VENTURI 1000LTR
AZ3616	33240-002370	FKIT 3G VENTURI 600LTR
AZ3617	33240-002390	FKIT 3G VENTURI 1000 LTR
AZ3604	NA	FK3G ROTOXHOSE 300
AZ3606	33240-004400	FK3G TAPXROTO UNION 600/1000
AZ3607	33240-004350	FK3G TAPXROTO UNION 150/400
AZ3608	33240-004300	FK3G ROTOXHOSE 600/1000
AZ3609	33240-004250	FK3G ROTOXHOSE 150/400
AZ3610	33230-001950	FSA-CH-050L/H-S12-VITON
AZ3612	33240-004200	FK3G HOSE X1/2"
AZ3613	33240-004700	FK3G VENTXVAL CON FEED
AZ3614	33240-004650	FK3G VALVXTAP CON
AZ3615	33240-004750	FK3G VENTXVAL CON ACID
AZ3620	33240-004600	FK3G NRV FOR 1000LTR CHANNEL
AZ3621	33240-004450	FK3G S22XTAP CONNECTION
AZ3885	33240-003050	FKIT 3G MANIFOLD FOR EC/PH SENSOR
AZ3963	33000-005690	FKITZG DOSING NOZZLE WITH NRV
AZ3964	33000-005683	FKITZG DOSE UNION NOZZLE
AZ3965	33120-005200	FKITZG DOSE NRV STRAIGHT
AZ3994	33000-014760	FKIT 2G PD 1000LTR CHANNEL

# DELTA T LOGGERS

## WET-2 SENSOR™

- Measures Water content, EC and Temperature
- Measures directly within the root zone
- A vital tool for precision horticulture

The WET Sensor has crucial applications in precision horticulture and soil science research and is usable in both soils and growing substrates. It is exceptional in its ability to measure pore water conductivity (ECp), the EC of the water that is available to the plant.

### WET Kit

WET Sensors are normally ordered as a complete kit that includes a WET Sensor, an HH2 Moisture Meter and a handy carry case. There are three types of Kit - each with a different set of substrate calibrations, including coir, peat and mineral wool.



## THETAKIT

### ML3 ThetaKit (Soil Moisture Measurement Kit)

- Rapid, accurate measurement of water content in soil
- Used by many of the world's leading golf courses and sporting venues
- Soil moisture with  $\pm 1\%$  accuracy
- View, store and retrieve readings with the HH2 Moisture Meter
- International reputation for ruggedness and reliability
- Fast and easy to use research grade instrument

### Golf & sports turf applications

A leading international sports turf consultancy, STRI, provides independent advice to around 2,100 sports clubs and leisure facilities every year. STRI has produced a video on putting green quality, in which the ThetaKit is recommended.

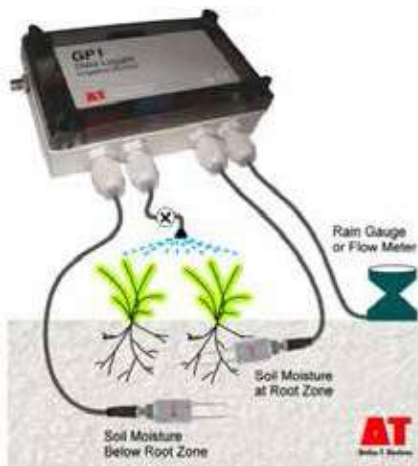
[For Prices & Specifications Please Contact Us.](#)



## GP1 DATA LOGGER

- 2 differential analogue voltages
- 2 temperature channels
- 2 pulse counters
- Smart relay control

The GP1 Data Logger is a complete logging solution housed in an IP67 enclosure with battery power. The internal memory can hold >600,000 readings - more than enough for one year's operation (typical).



## GP2 DATA LOGGER

- Powerful and rugged field data logger
- 12 differential (or 24 single ended) channels
- Ideal for demanding research applications
- Powerful and diverse control capabilities
- GPRS modem communications
- Unique Simulator feature

The GP2 is a powerful 12 channel data logger that is easy to use, versatile, rugged and reliable. It can log most sensor types and accepts voltage, resistance, current, potentiometer, bridge, counter, frequency, and digital state inputs. DeltaLINK software helps the user set up logging sequences and provides control over reading frequency, sensor type, thresholds, units and much more. All Delta-T sensors can be selected from a menu.



**For Prices & Specifications Please Contact Us.**

# DELTA T SENSORS

## SM150

- Cost effective soil moisture sensor
- $\pm 3\%$  accuracy
- Good temperature and salinity stability
- Easy data logger connection (0 - 1V DC)

The SM150 Soil Moisture Sensor measures volumetric soil moisture content with 3% accuracy. It offers precision and reliability at an extremely affordable price.

### Easy installation

The SM150 Soil Moisture Sensor is buriable and its cylindrical shape makes it easy to install in augered holes (45mm diameter). The threaded base of the sensor can be connected to optional 50cm and 100cm extension tubes. Two sharp pins minimise soil and substrate disturbance during insertion and permit superior contact for more accurate measurements. The SM150 use the same high quality range of cables and extensions as the SM300 Sensor.



## SM300

- Research grade soil moisture sensor
- $\pm 2.5\%$  accuracy
- Good temperature and salinity stability
- Soil temperature (only when buried)
- Easy data logger connection (0 - 1V DC)

The SM300 Soil Moisture Sensor offers convenience and cost saving by combining soil moisture and temperature measurement. It can be used in all soil types, including saline soils. Engineered for reliability and high performance, the SM300 is well suited to both research and agricultural applications.

The SM300 Soil Moisture Sensor is a dual purpose soil moisture probe - it can be used both with the HH2 Meter for instant readings, or left in-situ for continuous monitoring with a data logger

### Easy installation

The SM300 Soil Moisture Sensor is buriable and its cylindrical shape makes it easy to install in augered holes (45mm diameter). The threaded base of the sensor can be connected to optional 50cm and 100cm extension tubes. The sharp twin pin design minimises soil and substrate disturbance and allows for superior contact for more accurate measurements.

**For Prices & Specifications Please Contact Us.**



## PR2

- Soil moisture content - not just trends
- Low salinity and temperature sensitivity
- Portable meter option for convenient multi-site measurement
- Out of the box solution - supplied with soil calibrations for common soil types
- IP68 protected connectors for versatile connectivity
- Uses access tubes for easy probe insertion and removal

The PR2 Profile Probe is available in two sizes to measure to a depth of 40cm or 100cm.

The PR2/4 has sensing elements at 10/20/30/40cm

**For Prices & Specifications Please Contact Us.**

